

***National Compact Stellarator Experiment (NCSX) SubC# S005243-F
Vacuum Vessel Sub Assembly Production***

Weekly Status Report 06/22/05 thru 06/29/05

Project Management

- A team from PPPL visited MTM this week, toured the facilities and witnessed the current activities going on in the shop.
- S005243-F Change Order No. 1 was received.

Process Engineering

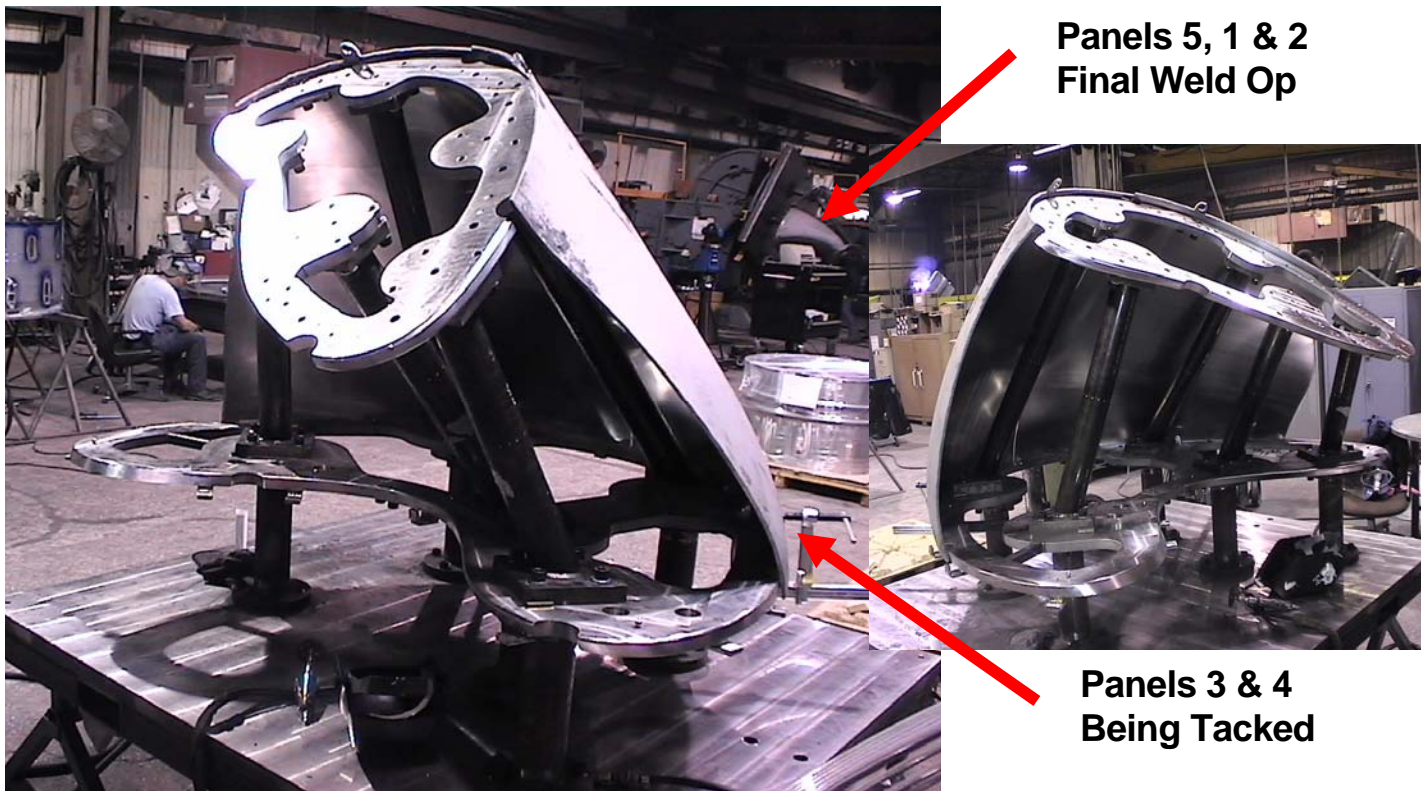
- Processing spacer fixture.

VVSA Fabrication

- Both 60° fixtures are complete and being used in fabrication.
- Development Panels – All ten are complete and in fabrication.
- Production Panels are in the process of being formed, a spread sheet showing the status of each panel was given to Hutch on Tuesday. Excerpts from the report are included in this weeks report on the second page.
- Panels 5, 1 & 2 are on the first 60° fixture and are currently having the final interior cover passes welded.
- Panels 2 and 3 are being tacked onto the second 60° fixture. (see picture below) .

Quality Control, Drawings & Pictures

- PS493 CMM PPPL NCSX VVSA approval was received this week.



Production Panel Status – As of Tuesday Morning

Lot 4

	Weld lug	Receive panel	Grind radius	1st form	Weld lug	Blast	Anneal	2nd form	Blast	Trim	Inspect	Satus
Panel # 1A	Complete	Complete										At Grind
Panel # 1B	Complete	Complete										At Grind
Panel # 2A	Complete	Complete										At Grind
Panel # 2B	Complete	Complete	Complete									At 1st form
Panel # 3A	Complete	Complete	Complete	Complete	Complete	Complete	Complete					At receiving
Panel # 3B	Complete	Complete	Complete	Complete	Complete	Complete	Complete					At receiving
Panel # 4A	Complete	Complete	Complete	Complete	Complete	Complete	Complete					At final form
Panel # 4B	Complete	Complete	Complete	Complete	Complete	Complete	Complete					At final form
Panel # 5A	Complete	Complete	Complete	Complete	Complete	Complete	Complete					At final form
Panel # 5B	Complete	Complete	Complete	Complete	Complete	Complete	Complete					At final form
Panel # 6A	Complete	Complete										At Grind
Panel # 6B	Complete	Complete	Complete									At 1st form
Panel # 7A	Complete	Complete	Complete									At 1st form
Panel # 7B	Complete	Complete	Complete	Complete	Complete	Complete	Complete					At receiving
Panel # 8A	Complete	Complete										At Grind
Panel # 8B	Complete	Complete	Complete									At 1st form
Panel # 9A	Complete	Complete	Complete	Complete	Complete	Complete	Complete					At final form
Panel # 9B	Complete	Complete	Complete	Complete	Complete	Complete	Complete					At final form
Panel # 10A	Complete	Complete										At Grind
Panel # 10B	Complete	Complete	Complete	Complete	Complete	Complete	Complete					At final form

Lot 5

	Weld lug	Receive panel	Grind radius	1st form	Weld lug	Blast	Anneal	2nd form	Blast	Trim	Inspect	Satus
Panel # 1A	Complete	Complete	Complete									At first form
Panel # 1B	Complete	Complete										At grind
Panel # 2A	Complete	Complete										At grind
Panel # 2B	Complete	Complete										At grind
Panel # 3A	Complete	Complete	Complete									At first form
Panel # 3B	Complete	Complete										At grind
Panel # 4A	Complete	Complete	Complete									At first form
Panel # 4B	Complete	Complete										At grind
Panel # 5A	Complete	Complete	Complete	Complete	Complete	Complete						Ready for
Panel # 5B	Complete	Complete	Complete	Complete	Complete	Complete	Complete					At final form
Panel # 6A	Complete	Complete										At grind
Panel # 6B	Complete	Complete										At grind
Panel # 7A	Complete	Complete										At grind
Panel # 7B	Complete	Complete										At grind
Panel # 8A	Complete	Complete	Complete									At 1st form
Panel # 8B	Complete	Complete										At grind
Panel # 9A	Complete	Complete										At grind
Panel # 9B	Complete	Complete										At grind
Panel # 10A	Complete	Complete										At grind
Panel # 10B	Complete	Complete										At grind

Lot 6

	Weld lug	Receive panel	Grind radius	1st form	Weld lug	Blast	Anneal	2nd form	Blast	Trim	Inspect	Satus
Panel # 1A	complete	complete										At grind
Panel # 1B												At polish
Panel # 2A	complete	complete										At grind
Panel # 2B												At polish
Panel # 3A	complete	complete										At grind
Panel # 3B												At polish
Panel # 4A	complete											At receiving
Panel # 4B												At polish
Panel # 5A	complete	complete	complete	complete	complete	complete						ready for
Panel # 5B												At polish
Panel # 6A	complete	complete										At grind
Panel # 6B												At polish
Panel # 7A	complete											At grind
Panel # 7B	complete											At receiving
Panel # 8A	complete	complete										At grind
Panel # 8B												At polish
Panel # 9A	complete	complete										At grind
Panel # 9B												At polish
Panel # 10A	complete	complete										At grind
Panel # 10B												At polish