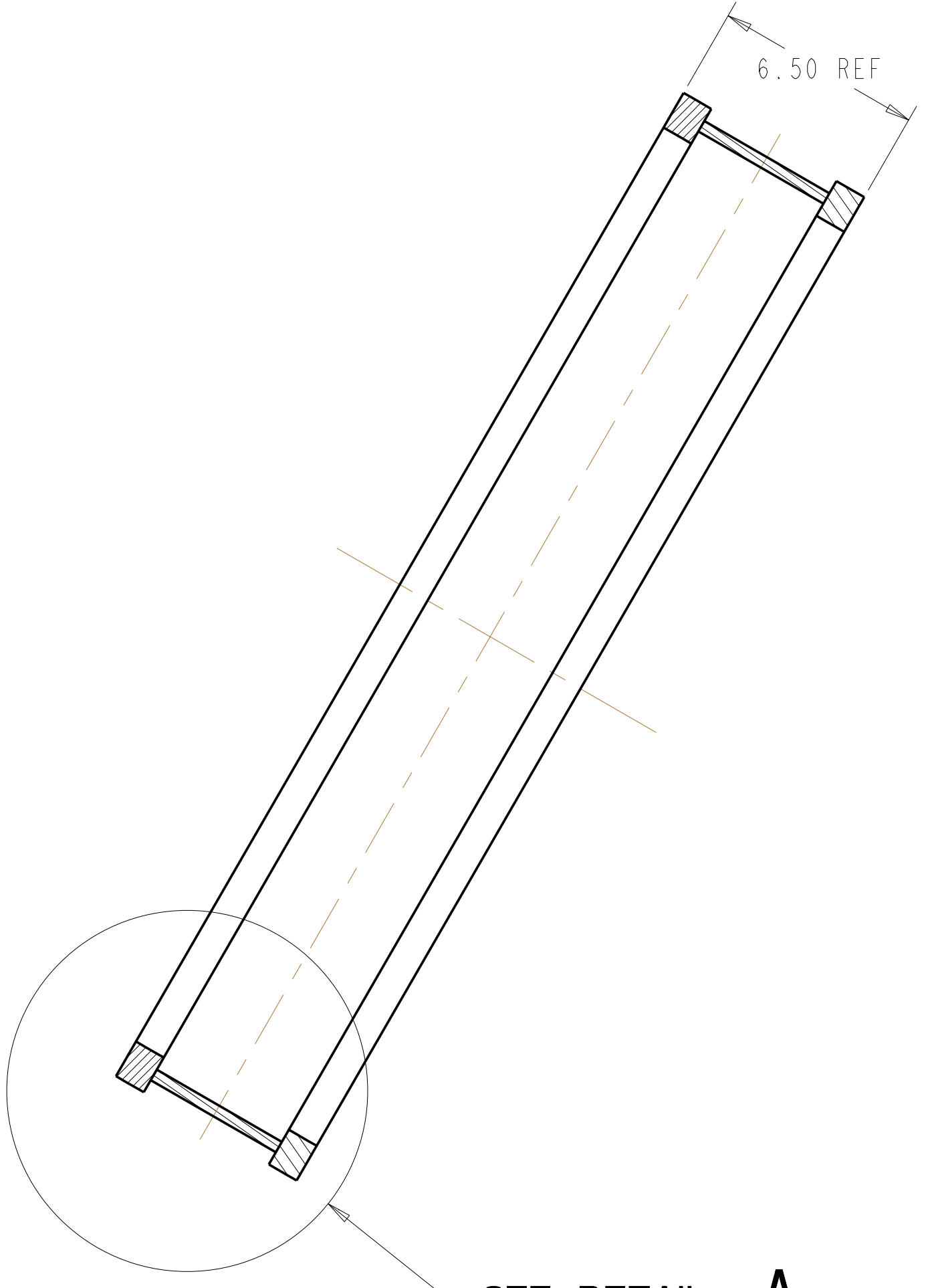
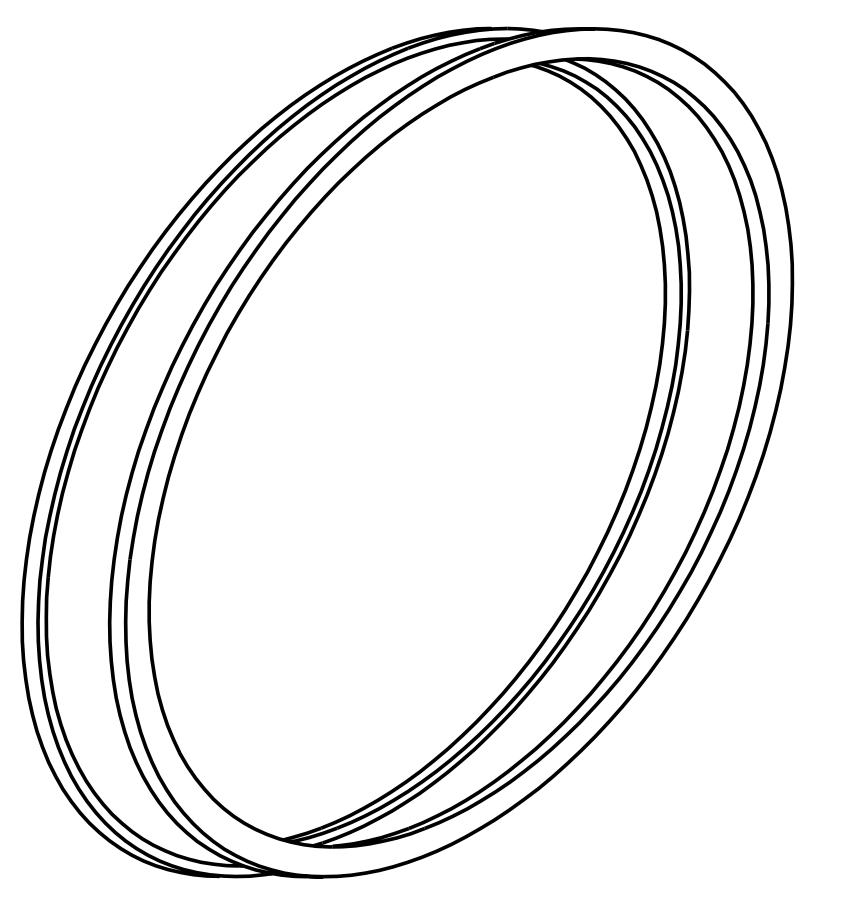


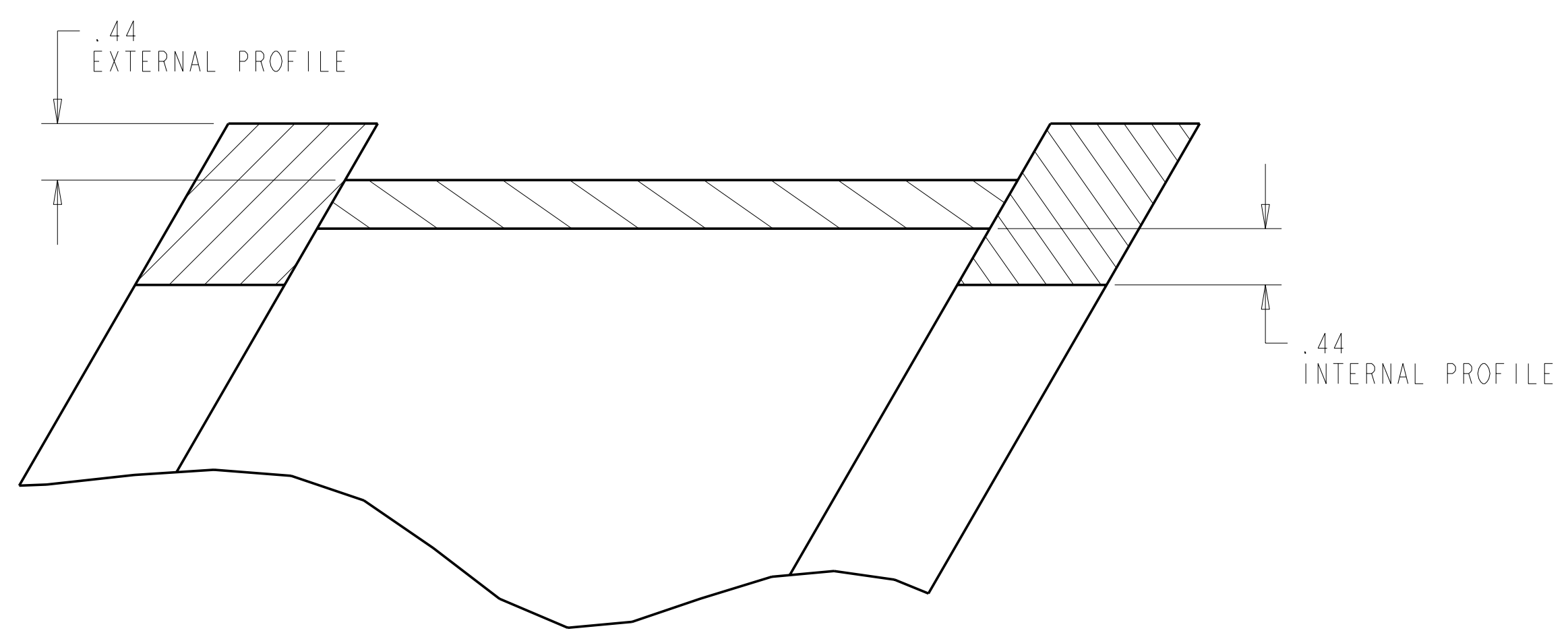
DETAIL A
SCALE 1.000



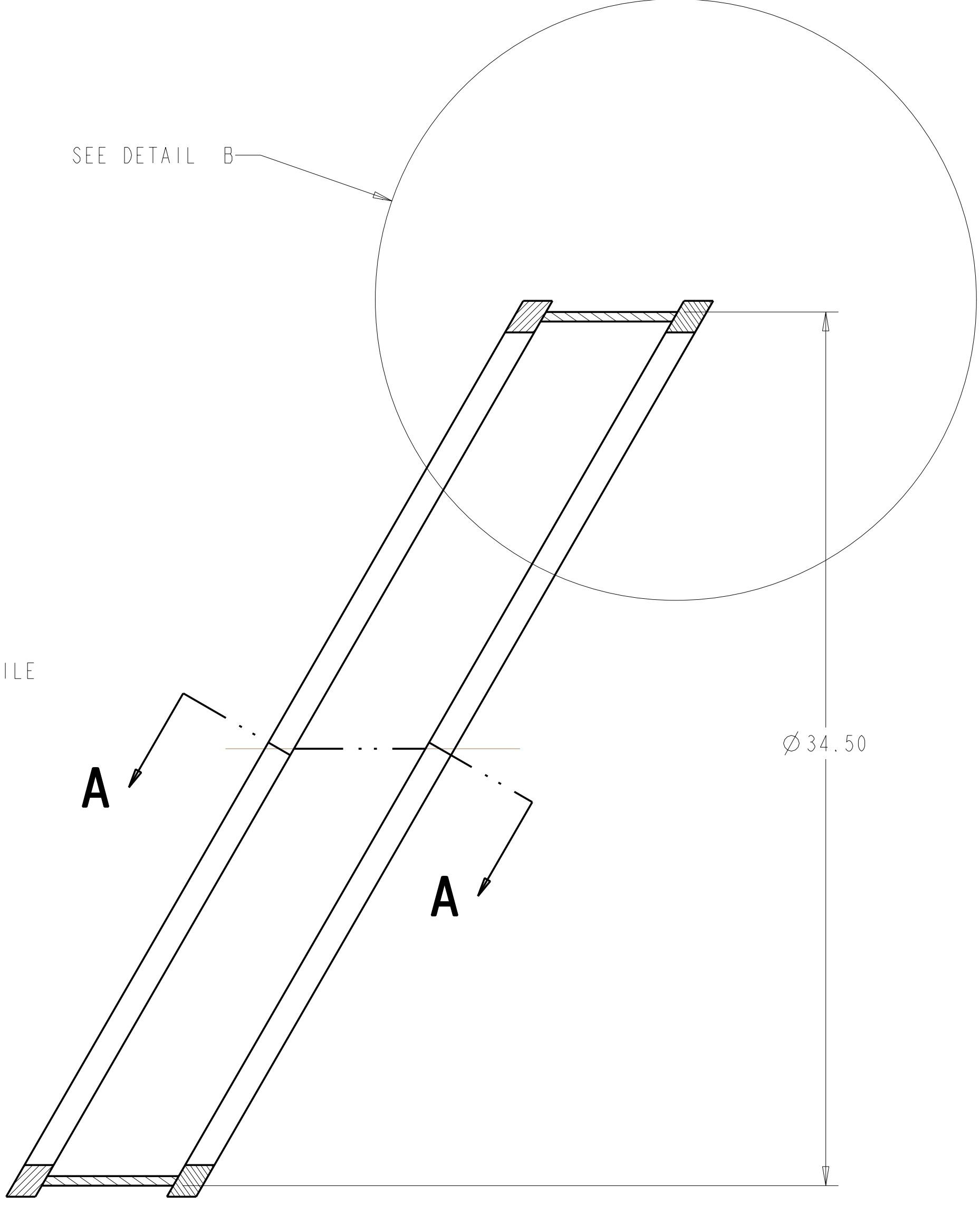
SECTION A-A
SEE DETAIL A



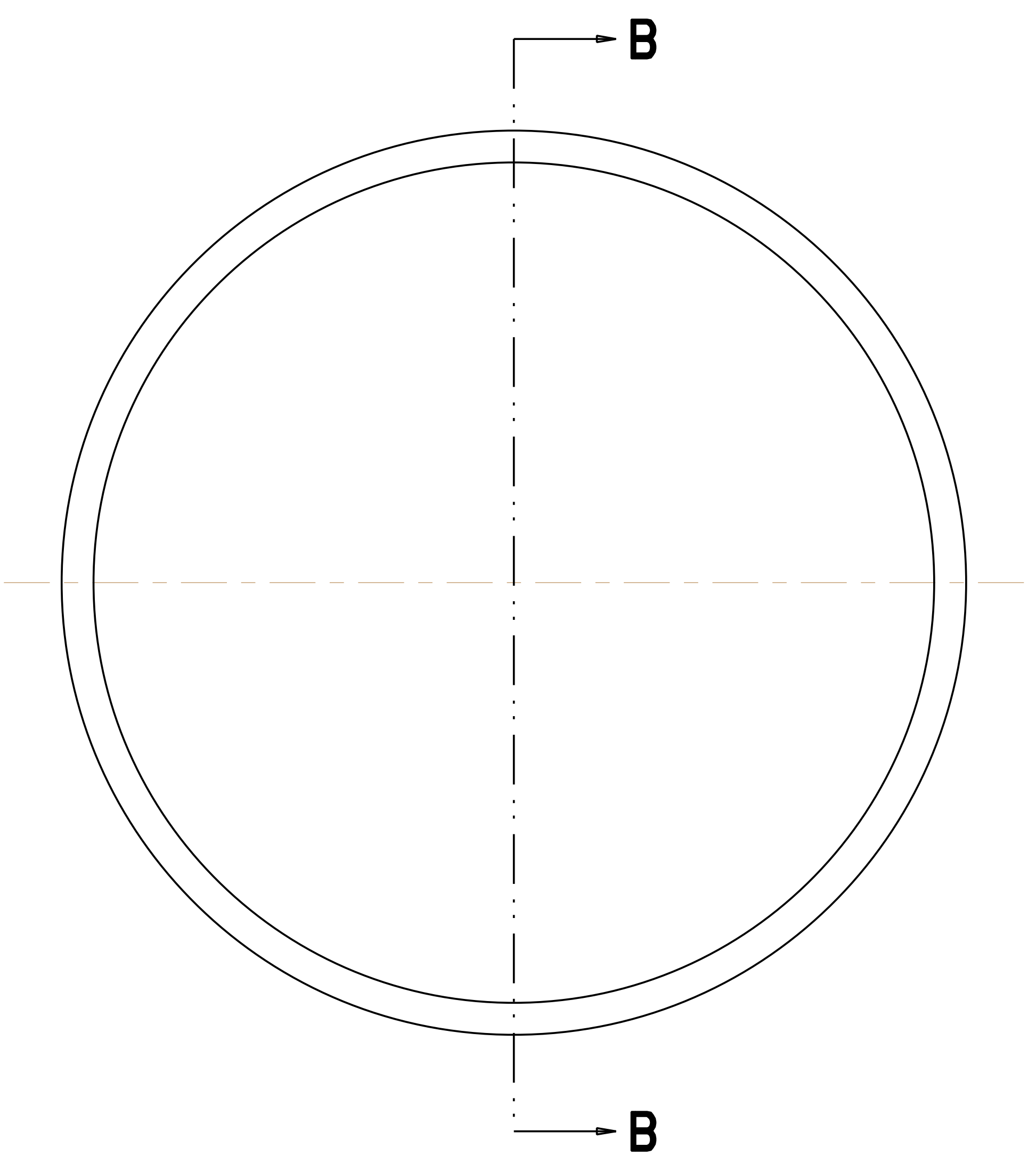
REFERENCE VIEW ONLY
SCALE 0.125



DETAIL B
SCALE 1.000



SECTION B-B
SCALE 0.250



SPOOL PIECE WELDMENT DETAIL

- NOTES:**
1. INTERPRET DIMENSIONS AND TOLERANCES PER ANSI Y14.5 M.
 2. DIMENSIONS ARE IN INCHES.
 3. REQUIREMENTS FOR FABRICATION ARE DEFINED IN THE DRAWINGS, MODELS AND SPECIFICATIONS.
 4. GEOMETRY OF COMPONENTS DEFINED IN CAD MODELS/FILES SE1203-002.STK.
 5. ADDITIONAL TOLERANCE LIMITS ARE DEFINED IN DOCUMENT NCSX-12-122002-PH.

CAGE CODE	PART OR IDENTIFYING NO	NOMENCLATURE OR DESCRIPTION	MATERIAL	SPECIFICATION	FIND NO
2	SE1203-015_STK	FIELD_WELD_JOINT_FLANGE_SPACER			3
1	SE1203-011	FIELD_WELD_JOINT_SPACER			2
1	SE1203-002_STK				1

← NEXT ASSEMBLY PARTS LIST

NO REPRESENTATION OR WARRANTY, EXPRESSED OR IMPLIED, IS MADE AS TO THE ACCURACY, COMPLETENESS OR USEFULNESS OF THE INFORMATION OR STATEMENTS CONTAINED IN THESE DRAWINGS, OR THAT THE USE OR DISCLOSURE OF ANY INFORMATION, APPARATUS, METHOD OR PROCESS DISCLOSED IN THESE DRAWINGS MAY NOT INFRINGE PRIVATE RIGHTS OF OTHERS. NO LIABILITY IS ASSUMED WITH RESPECT TO THE USE OF, OR FOR DAMAGES RESULTING FROM THE USE OF, ANY INFORMATION, APPARATUS, METHOD OR PROCESS DISCLOSED IN THESE DRAWINGS. DRAWINGS MADE AVAILABLE FOR INFORMATION TO BIDDER ARE NOT TO BE USED FOR OTHER PURPOSES, AND ARE TO BE RETURNED UPON REQUEST OF THE FORWARDING CONTRACTOR.

P THIS DRAWING PRODUCED ON PRO-ENGINEER

REV	DESCRIPTION	BY	DATE	CHK	DEPT	DATE	PE	REQ	DATE	DRNL	DOE	DATE

SCALE	X	DES	X		
TOLERANCES UNLESS OTHERWISE SPECIFIED		DRW	X		
FRACTIONS		CHK			
XX DECIMALS	± .01	SECT			
XXX DECIMALS	± .005	DEPT			
ANGLES	± 0°15'	PE			
BREAK SHARP EDGES	06 MAX	CR			
FINISH	.125 UNLESS OTHERWISE SPECIFIED	PJ			
		RED			
		PPPL DRFT			

VERSION NO.	PLANT	BLDG	FL	SHT OF	TYPE	CLASS
X	X	X	X	I	I	X
RELEASE LEVEL	SE1203-002-STK					REV
WIP						X

Oak Ridge National Laboratory
 managed for the DEPARTMENT OF ENERGY under
 U.S. GOVERNMENT contract DE-AC05-00OR22725
 UT-BATTELLE, LLC, Oak Ridge, Tennessee
NATIONAL COMPACT STELLARATOR EXPERIMENT