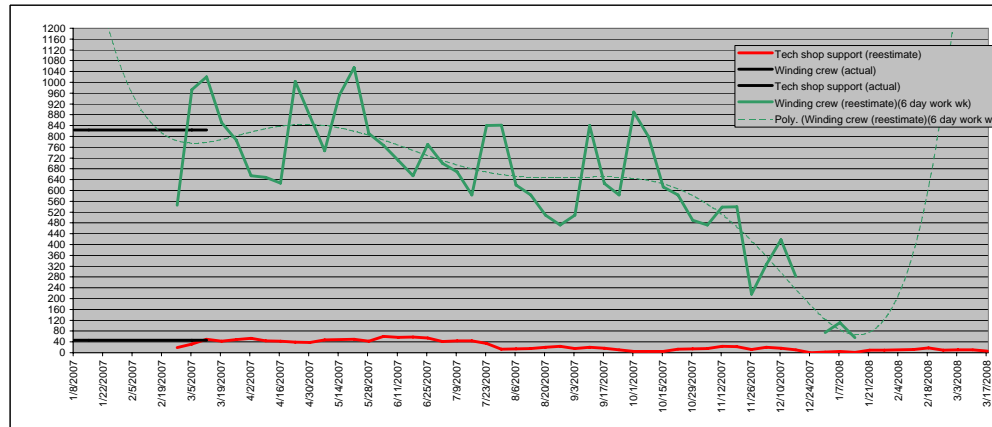


S Number: 142
S Title: Windings and Assembly
Numbers: 1408, 1451, & 1459
Title: Modular Coil Winding Supplies (1408)
Title: Modular Coil Winding Operations (1451)
Title: Modular Coil Punch List Items (1459)
Manager: Jim Chrzanowski

RESOURCE	TOTAL	1/8/07	1/15/07	1/22/07	1/29/07	2/5/07	2/12/07	2/19/07	2/26/07	3/5/07	3/12/07	3/19/07	3/26/07	4/2/07	4/9/07	4/16/07	4/23/07	4/30/07	5/7/07	5/14/07	5/21/07	5/28/07	6/4/07
EM/TB	29305								461.8	822.8	945.9	708.9	700.4	639.8	545.8	542.4	528.9	568.2	836.1	750.4	621.9	566.3	947.3
EM7/SB	350.2								4.9	8.1	12.3	10.6	12	13.2	10.8	10.6	9.7	9.5	11.9	12.1	12.4	10.6	15.2
EM7/TB	1050								14.6	24.4	37	31.9	36.1	39.6	32.4	31.8	29.2	28.5	35.8	36.4	37.2	31.7	45.6
29305.4 Winding crew (reestimate)(5 day work wk)		1/8/07	1/15/07	1/22/07	1/29/07	2/5/07	2/12/07	2/19/07	2/26/07	3/5/07	3/12/07	3/19/07	3/26/07	4/2/07	4/9/07	4/16/07	4/23/07	4/30/07	5/7/07	5/14/07	5/21/07	5/28/07	6/4/07
1400.2 Tech shop support (reestimate)									461.8	822.8	945.9	708.9	700.4	639.8	545.8	542.4	528.9	568.2	836.1	750.4	621.9	566.3	947.3
2470.5 Winding crew (actual)	823.5	823.5	823.5	823.5	823.5	823.5	823.5	823.5	823.5	823.5	823.5	823.5	823.5	823.5	823.5	823.5	823.5	823.5	823.5	823.5	823.5	823.5	823.5
138 Tech shop support (actual)	46	46	46	46	46	46	46	46	46	46	46	46	46	46	46	46	46	46	46	46	46	46	46
2187 18 people m-f avg 45hrs workwk x	729	729	729	729	729	729	729	729	729	729	729	729	729	729	729	729	729	729	729	729	729	729	729
29238.2 Winding crew (reestimate)(6 day work wk)	823.5	823.5	823.5	823.5	823.5	823.5	823.5	823.5	823.5	823.5	823.5	823.5	823.5	823.5	823.5	823.5	823.5	823.5	823.5	823.5	823.5	823.5	823.5
	46	46	46	46	46	46	46	46	46	46	46	46	46	46	46	46	46	46	46	46	46	46	46
	835	835	871	871	795	796	756	756	860	860	860	860	860	860	860	860	860	860	860	860	860	860	860
	84	84	15	15	2	2	52	52	77	77	77	77	77	77	77	77	77	77	77	77	77	77	77

Winding estimate manpower cross check (job 1451 only)



S Number: 142
 S Title: Windings and Assembly
 Numbers: 1408, 1451, & 1459
 Title: Modular Coil Winding Supplies (1408)
 Title: Modular Coil Winding Operations (1451)
 Title: Modular Coil Punch List Items (1459)
 Manager: Jim Chrzanowski

P-Card Page 1 of 1

PPPL Princeton Plasma Physics Laboratory Procurement Card System

Name: Requestor: Net ID: Ineighan

P-Card Log # : TM-11629.2 1/8 and 1/4 Dia. fiber glass rope
 Requestor: Eugene F Krauss Status: New Cardholder: Ineighan Created: 5/7/2007

P-Card Log Line Item

Line	Quantity	UOM	Unit Price	Extended	Request Date	Request Comment
1	11250	FT	\$4.31	48487.50	5/9/2004	
Enter Complete Description - include make, model, item specifications, etc. T89- 50-4710 GLK125HD AMI Glass rope 1/8" dia 3,750 FT/CS						
2	5000	FT	\$1.13	5650.00	5/9/2004	
Enter Complete Description - include make, model, item specifications, etc. T89- 50-4720 GLK185HD AMI Glass rope 3/16" dia 2,550 FT/CS						

Cost Center Distribution Account for this Line Item

Cost Ctr	Wk Pkg	Sub Pkg	Expense Class	Dollar Amount	Delete
8450	1***	1408	430L-MATERIALS & SERVICES	\$1,900.50	

Vendor Name: Auburn MFG. Co. 1-800-264-6689 Date Ordered: 5/7/2007 Date Expected:

Unshipped Amount:	\$1,900.50
Shipping/Handling:	\$0.00
Sales Tax:	\$0.00
Other Charges:	\$0.00
Total Charges:	\$1,900.50

Buttons: Save Without Submitting, Submit for Approval, Copy Log, Delete Log

<https://boone.pplp.gov/ppplPcard/Pcard.asp?action=2&Page=7>

5/10/2007

P-Card Page 1 of 2

PPPL Princeton Plasma Physics Laboratory Procurement Card System

Name: Requestor: Net ID: Ineighan

P-Card Log # : TM-11607.7 RE 2039 Hysol Epoxy and HD 3561 Hardner
 Requestor: Eugene F Krauss Status: Approved Cardholder: Ineighan Created: 3/21/2007

P-Card Log Line Item

Line	Quantity	UOM	Unit Price	Extended	Request Date	Request Comment
1	8	EA	\$90.77	726.16	1/4/2007	
Enter Complete Description - include make, model, item specifications, etc. RE 2039 Hysol Resin						
2	8	EA	\$110.89	887.12	1/4/2007	
Enter Complete Description - include make, model, item specifications, etc. HD-3561 Hysol Hardner						
3	2	EA	\$5.00	10.00	1/4/2007	
Enter Complete Description - include make, model, item specifications, etc. Certificate of Compliance for RE-2039-850 and HD3561						

Cost Center Distribution Account for this Line Item

Cost Ctr	Wk Pkg	Sub Pkg	Expense Class	Dollar Amount	Delete
8450	1***	1408	430L-MATERIALS & SERVICES	\$2,386.42	

Vendor Name: E. S. Hermann Co. 403-295-3100 Date Ordered: 1/21/2007 Date Expected:

Unshipped Amount:	\$2,386.42
Shipping/Handling:	\$43.34
Sales Tax:	\$0.00
Other Charges:	\$0.00
Total Charges:	\$2,386.42

Buttons: Submit for Approval, Copy Log, Delete Log

<https://boone.pplp.gov/ppplPcard/Pcard.asp?action=0&Page=7&txPcdNm=TM-116077>

5/10/2007

S Number: 142

S Title: Windings and Assembly

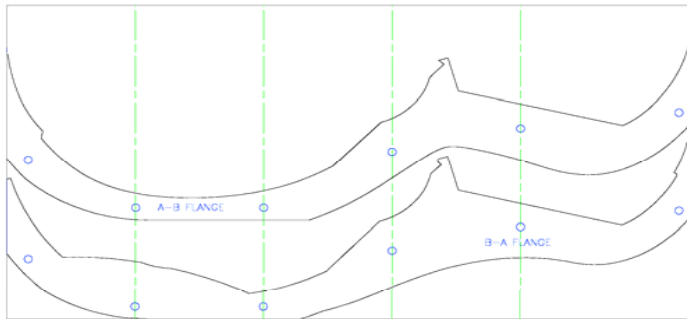
Numbers: 1408, 1451, & 1459

Title: Modular Coil Winding Supplies (1408)

Title: Modular Coil Winding Operations (1451)

Title: Modular Coil Punch List Items (1459)

Manager: Jim Chrzanowski



Mod Coil Test Flange
Assuming A-B joints with 18 inch centers => 6 holes per joint vs.
assumed 2-3 estimated by Task Force.

6/11/07	6/18/07	6/25/07	7/2/07	7/9/07	7/16/07	7/23/07	7/30/07	8/6/07	8/13/07	8/20/07	8/27/07	9/3/07	9/10/07	9/17/07	9/24/07	10/1/07	10/8/07	10/15/07	10/22/07	10/29/07	11/5/07	11/12/07	11/19/07	11/26/07	12/3/07
800.8	675.7	646.2	492.5	545.8	545.8	554.7	700.4	614.7	486.2	623.8	793	504.1	523	493.5	449	393.2	393.2	494	700.4	571.9	486.2	692.6	774.4	356.6	523
14.1	14.6	13.7	10.2	10.8	10.8	8.6	3.3	3.5	3.8	5.1	6	3.7	4.9	4	2.7	1.1	1.1	1.3	3.3	3.6	3.8	5.8	5.5	2.8	4.9
42.3	43.7	41.1	30.7	32.4	32.4	25.9	10	10.5	11.3	15.3	18.1	11.2	14.7	12	8.1	3.3	3.3	4	10	10.8	11.3	17.3	16.5	8.5	14.7
6/11/07	6/18/07	6/25/07	7/2/07	7/9/07	7/16/07	7/23/07	7/30/07	8/6/07	8/13/07	8/20/07	8/27/07	9/3/07	9/10/07	9/17/07	9/24/07	10/1/07	10/8/07	10/15/07	10/22/07	10/29/07	11/5/07	11/12/07	11/19/07	11/26/07	12/3/07
800.8	675.7	646.2	492.5	545.8	545.8	554.7	700.4	614.7	486.2	623.8	793	504.1	523	493.5	449	393.2	393.2	494	700.4	571.9	486.2	692.6	774.4	356.6	523
56.4	58.3	54.8	40.9	43.2	43.2	34.5	13.3	14	15.1	20.4	24.1	14.9	19.6	16	10.8	4.4	4.4	5.3	13.3	14.4	15.1	23.1	22	11.3	19.6
710.8	655	770.5	700.4	669.1	583.4	840.1	841.8	620.2	583.4	509	471.8	508.7	840.5	626.3	583.4	890.3	799	612.9	583.4	490.4	471.8	538.2	539.6	216.9	325.4

12/10/07	12/17/07	12/24/07	12/31/07	1/7/08	1/14/08	1/21/08	1/28/08	2/4/08	2/11/08	2/18/08	2/25/08	3/3/08	3/10/08	3/17/08
493.5	449		235.9	393.2	371.1	485.4	442.6	271.2	297	381.6	221.5	93	93	55.8
4	2.7		0.7	1.1	0.4	2.2	2.3	2.7	3.1	4.4	2.4	2.7	2.7	1.6
12	8.1		2	3.3	1.3	6.7	6.9	8	9.3	13.1	7.2	8	8	4.8
12/10/07	12/17/07	12/24/07	12/31/07	1/7/08	1/14/08	1/21/08	1/28/08	2/4/08	2/11/08	2/18/08	2/25/08	3/3/08	3/10/08	3/17/08
493.5	449	0	235.9	393.2	371.1	485.4	442.6	271.2	297	381.6	221.5	93	93	55.8
16	10.8	0	2.7	4.4	1.7	8.9	9.2	10.7	12.4	17.5	9.6	10.7	10.7	6.4
417.3	283		74.4	111.6	55.8									