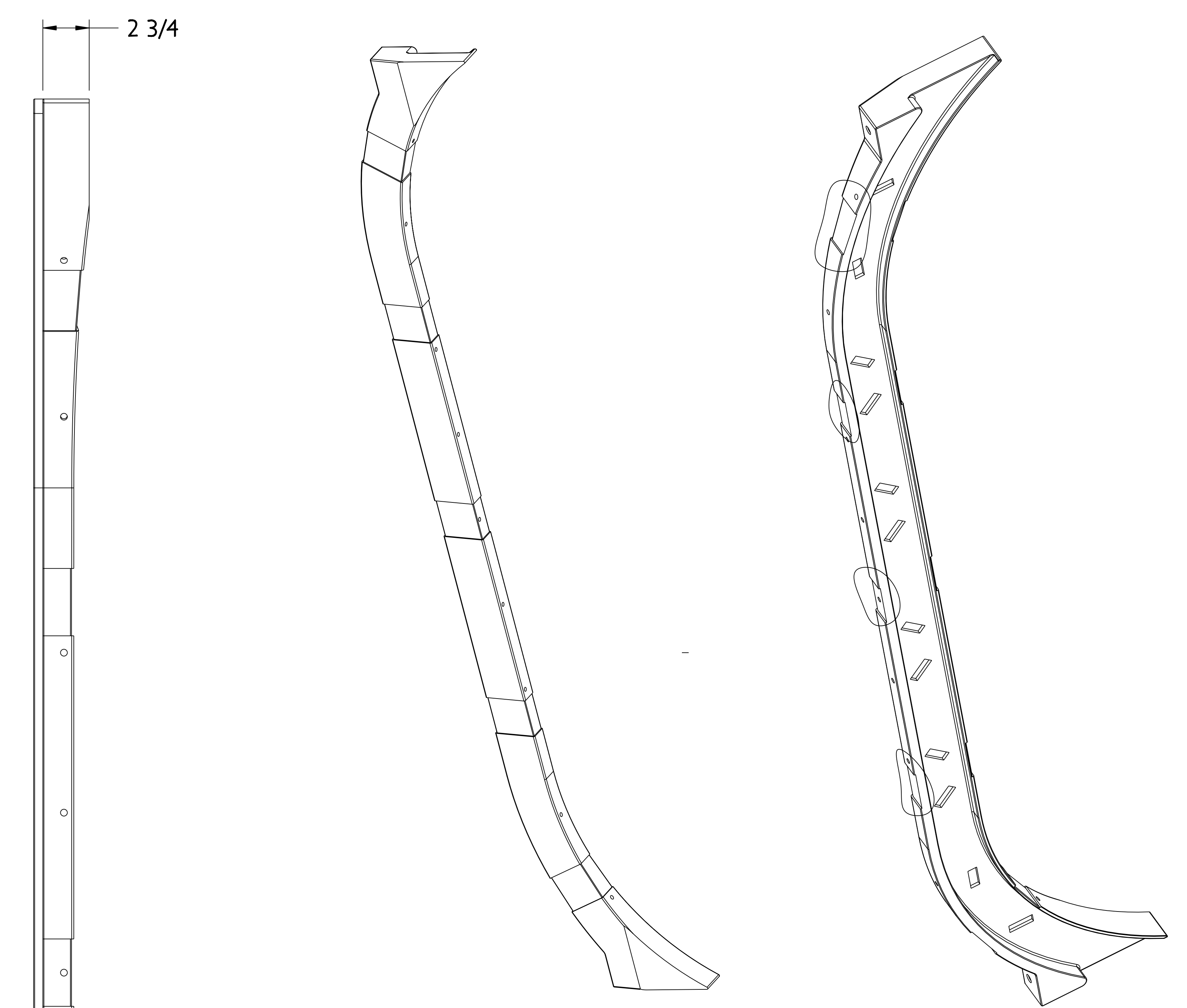
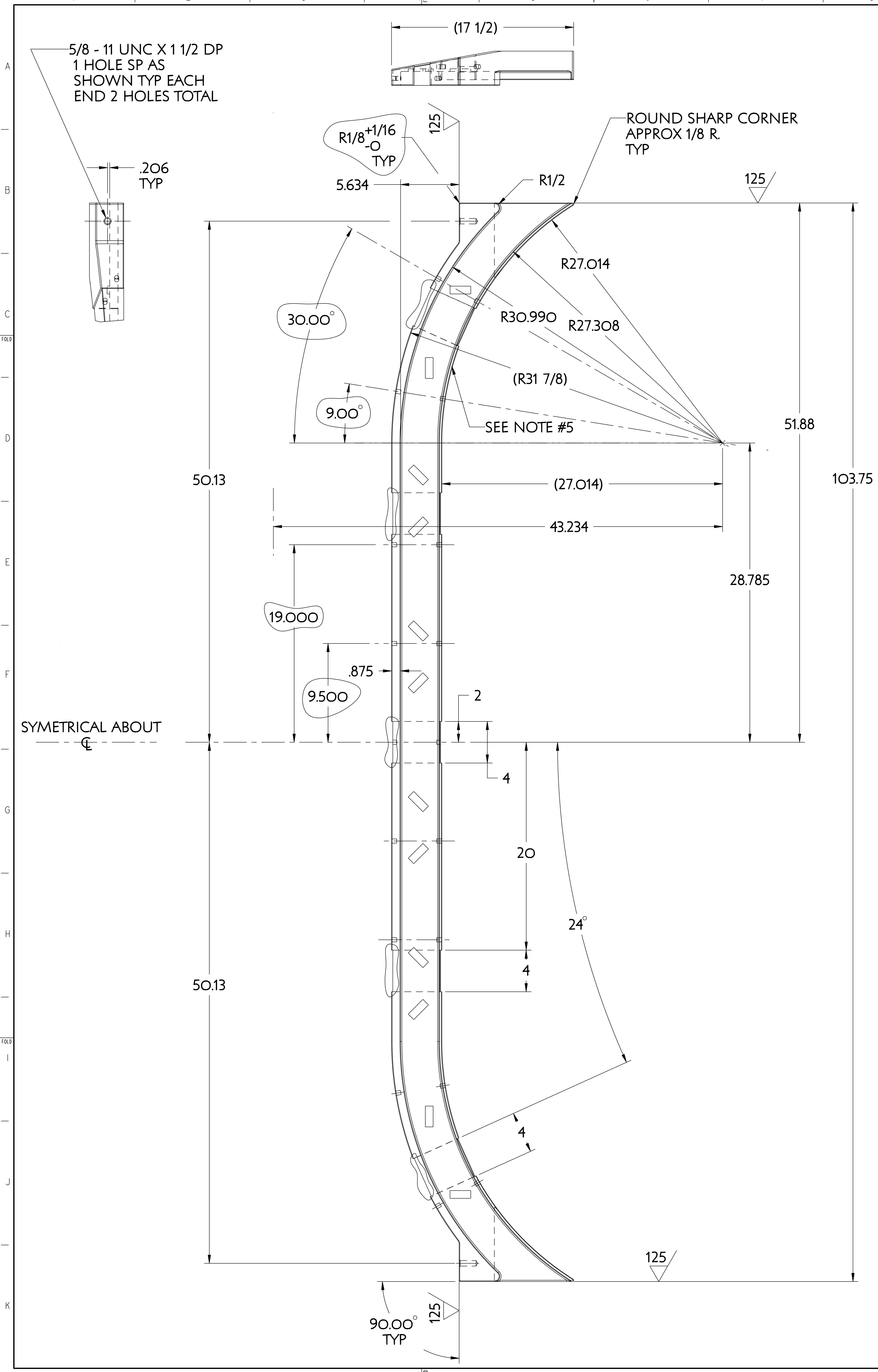


| NO. | REVISION | BY | CH | SUP | APPROVED | DATE |
|-----|------------------------|-----|----|-----|-----------|----------|
| 1 | REVISED PER ECN #5073 | JDR | MK | JS | M. KALISH | 2/03/06 |
| 2 | REVISED PER ECN #5103 | JDR | MK | JS | M. KALISH | 4/07/06 |
| 3 | REVISED PER ECN # 5178 | JDR | MK | JS | M. KALISH | 10/14/06 |



NOTES:

1. DIMENSIONS ARE IN INCHES
2. SEE SPECIFICATION, NCSX-CSPEC-131-03 IF CASTING PROCESS IS USED TO MANUFACTURE. SEE SPECIFICATION NCSX-CSPEC-131-04 IF WELDMENT PROCESS IS USED TO MANUFACTURE.
3. GEOMETRY IS DEFINED IN PRO ENGINEER CAD MODELS/FILES SE131-085.PRT
4. DRAWING AND CAD MODEL COMBINED DEFINE PART.
5. MACHINED FINISHED SURFACES TO CAD DATA. PROFILE TO BE WITHIN .020 UNLESS OTHERWISE SPECIFIED. PROFILE TOLERANCE IS BILATERAL ie 0.010 EITHER SIDE OF THE REFERENCED SURFACE.
7. SPOTFACE MIN. DIA/DEPTH AS REQ'D.
8. DIMENSIONS APPLY AT ROOM TEMPERATURE. OPERATING TEMPERATURE 80° K.

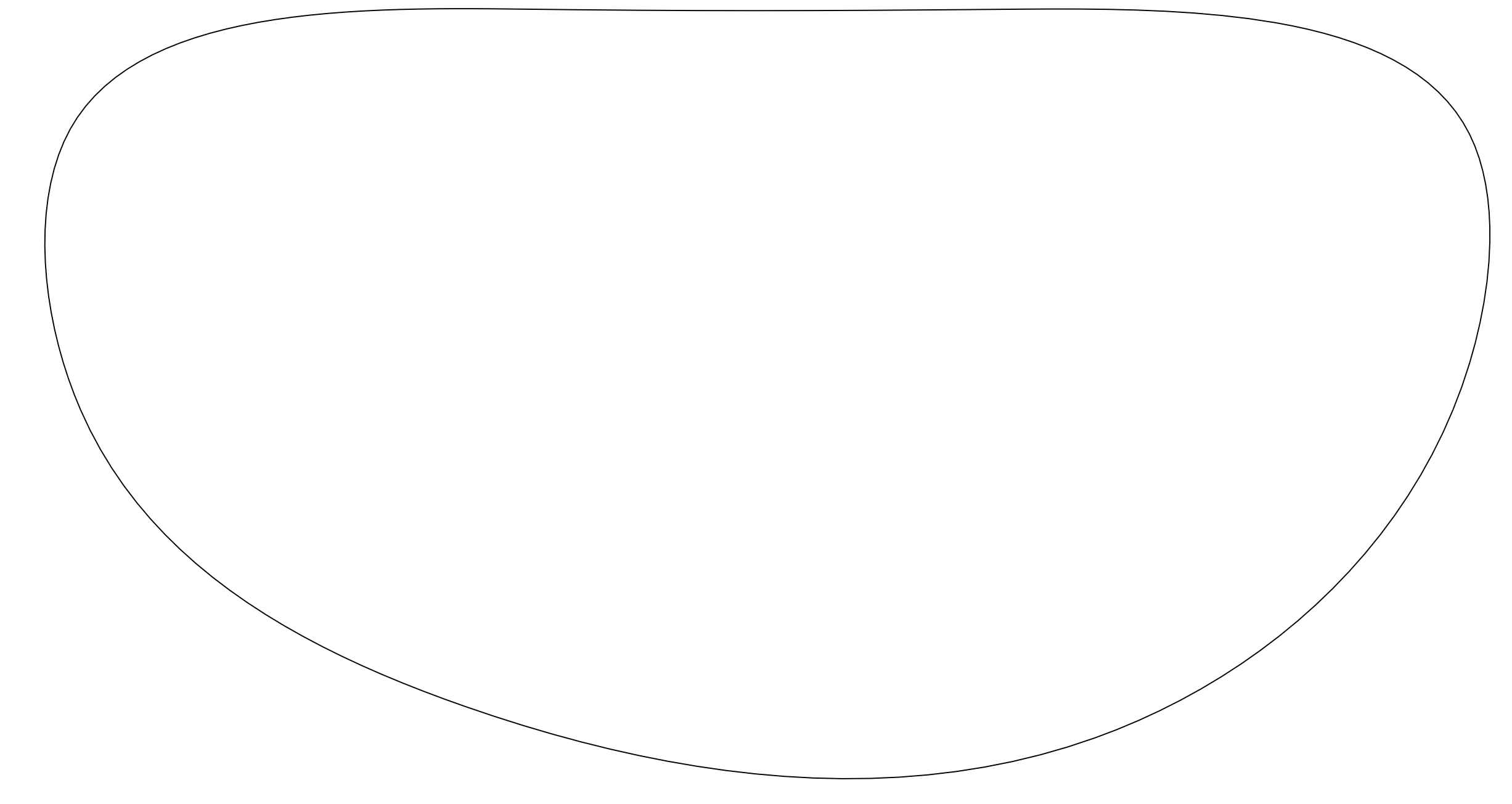
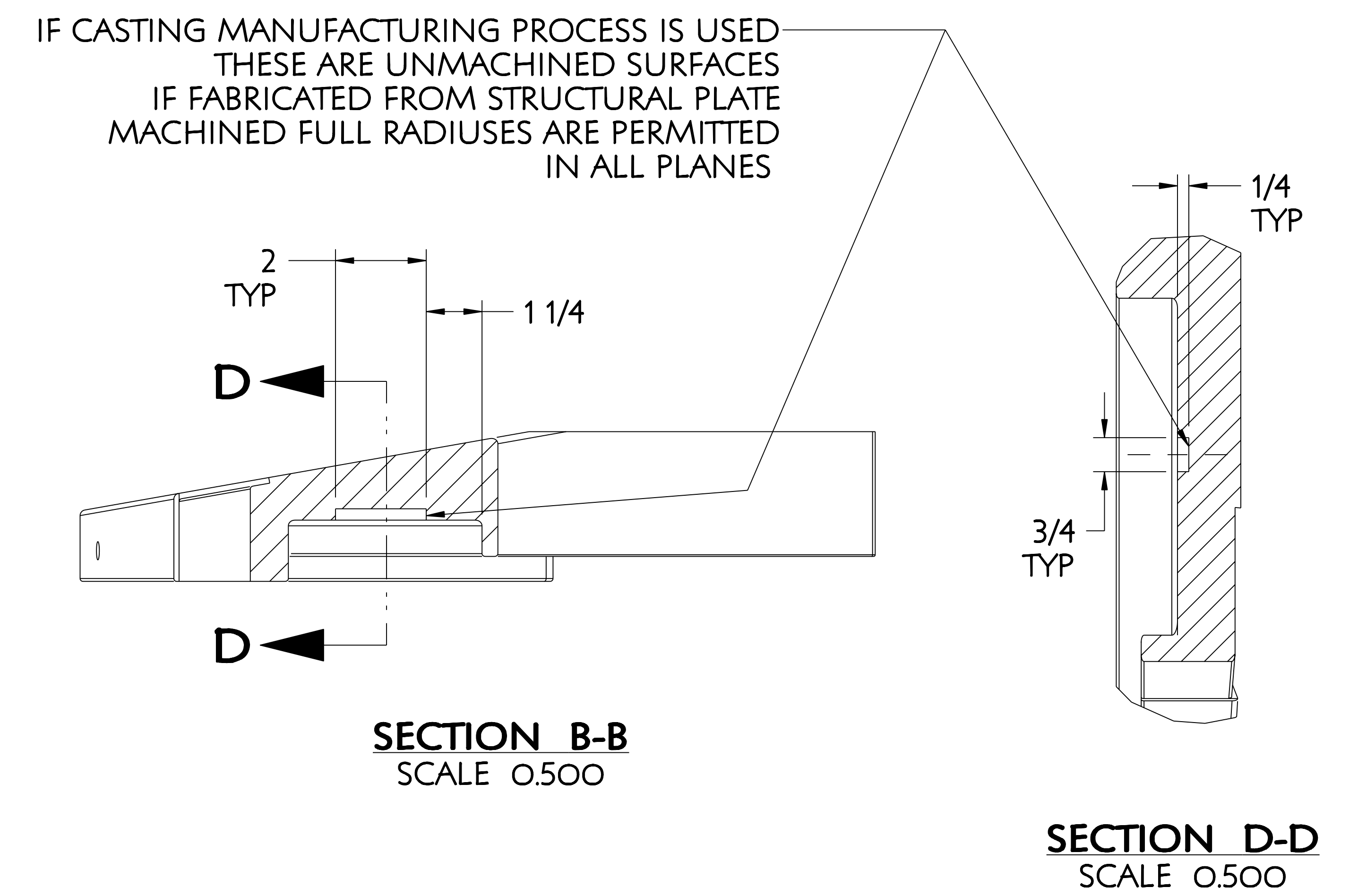
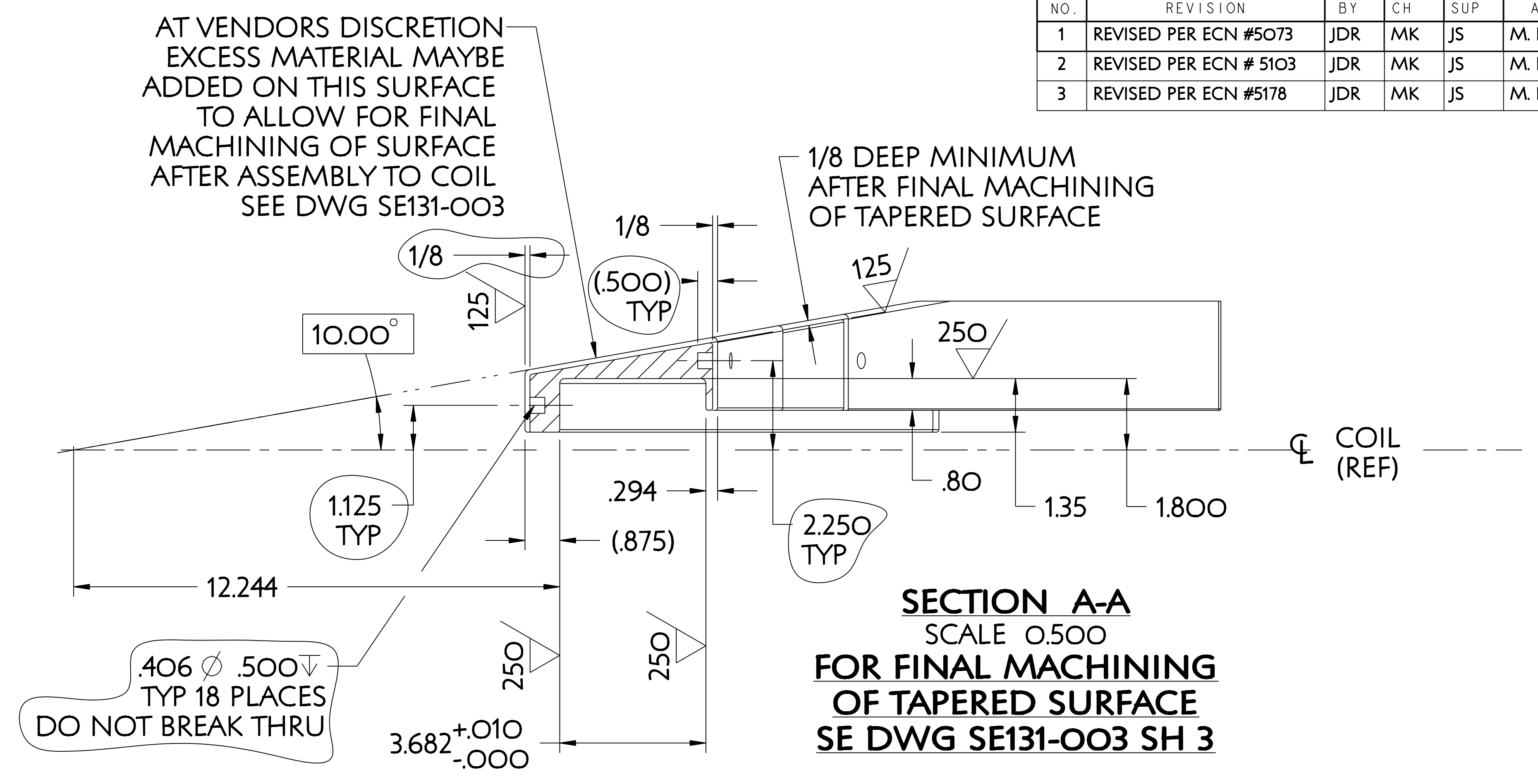
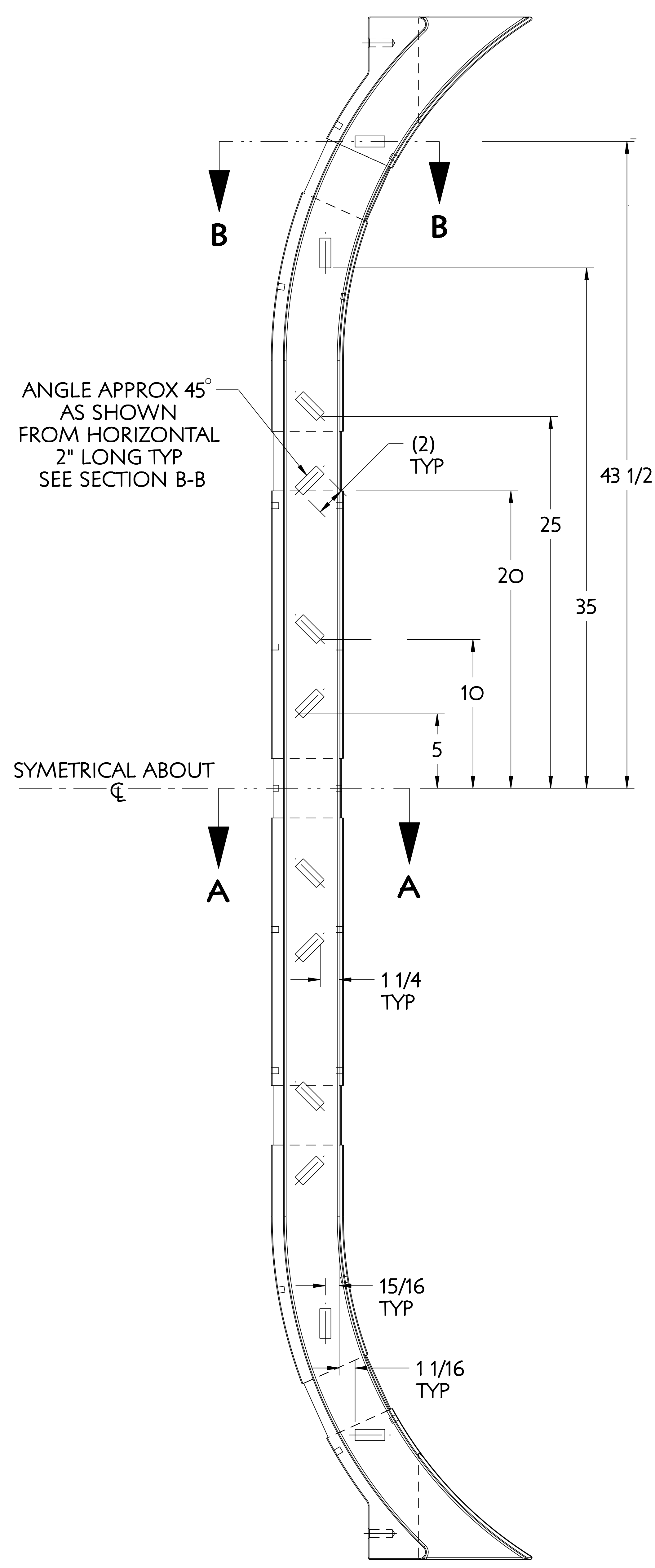
RELEASE LEVEL: WIP
DWG VERSION NO: 3

| | |
|------------------|-----------|
| WEIGHT | 190.7 lbs |
| MODEL NAME | SE131-085 |
| WELDING ENGINEER | |

| PART NO. | DRAWING NO | NOMENCLATURE OR DESCRIPTION | MATERIAL | QTY RECD |
|------------------------------------------------------------|-----------------------------|--------------------------------------------------------------------------------|----------|--------------|
| SE131-085 | | TF COIL WEDGE STRUCTURE | SEE SPEC | 36 |
| PARTS LIST | | | | |
| COMPUTER GENERATED DRAWING MANUAL CHANGES NOT PERMITTED | | PRINCETON PLASMA PHYSICS LABORATORY NATIONAL COMPACT STELLARATOR EXPERIMENT | | |
| DO NOT VERIFY INFORMATION BY SCALING DRAWING | | STELLARATOR CORE CONVENTIONAL COILS TF COIL WEDGE STRUCTURE DETAIL | | |
| SCALE 0.250 | TOLERANCES NON-CUMULATIVE | DSN: J. RUSHINSKI | 8/01/05 | DRAWING NO: |
| NEXT ASSEMBLY | DECIMAL-INCH FRACTIONS | CHK: M. KALISH | 8/01/05 | SE131-085 |
| | ANGULAR ±.05 OVER 120° ±.12 | ENGR: M. KALISH | 8/01/05 | SHEET 1 OF 2 |
| | | SUPV: J. SIEGEL | 8/01/05 | REV 3 |

NCSX-SE131-085

| NO. | REVISION | BY | CH | SUP | APPROVED | DATE |
|-----|------------------------|-----|----|-----|-----------|----------|
| 1 | REVISED PER ECN #5073 | JDR | MK | JS | M. KALISH | 2/03/06 |
| 2 | REVISED PER ECN # 5103 | JDR | MK | JS | M. KALISH | 04/07/06 |
| 3 | REVISED PER ECN #5178 | JDR | MK | JS | M. KALISH | 10/14/06 |



RELEASE LEVEL: WIP
DWG VERSION NO: 3

WEIGHT
190.7 lbs
MODEL NAME
SE131-085
WELDING ENGINEER

| PART NO. | DRAWING NO | NOMENCLATURE OR DESCRIPTION | MATERIAL | QTY | RECD |
|------------------------------------------------------------|------------|-----------------------------------------------------------------------------|--------------------------------------------------------------------------------|---------|--------------|
| PARTS LIST | | | | | |
| COMPUTER GENERATED DRAWING MANUAL CHANGES NOT PERMITTED | | CENTRAL FILES: UNLESS OTHERWISE SPECIFIED | PRINCETON PLASMA PHYSICS LABORATORY NATIONAL COMPACT STELLARATOR EXPERIMENT | | |
| DO NOT VERIFY INFORMATION BY SCALING DRAWING | | DIMENSIONS ARE IN INCHES MACHINE SURFACES BREAK SHARP EDGES .005/.020 | STELLARATOR CORE CONVENTIONAL COILS TF COIL WEDGE STRUCTURE DETAIL | | |
| SCALE 0.250 | | TOLERANCES NON-CUMULATIVE | DSN: J. RUSHINSKI | 8/01/05 | DRAWING NO: |
| NEXT ASSEMBLY | | DECIMAL-INCH FRACTIONS | CHK: M. KALISH | 8/01/05 | SE131-085 |
| | | .XX +/- .000 0°-120° +/- .010 | ENGR: M. KALISH | 8/01/05 | |
| | | .XXX +/- .005 120°-120° +/- .010 | SUPV: J. SIEGEL | 8/01/05 | SHEET 2 OF 2 |
| | | ANGULAR +/- 0°-15° OVER 120° +/- .010 | | | REV (3) |

NCSX-SE131-085