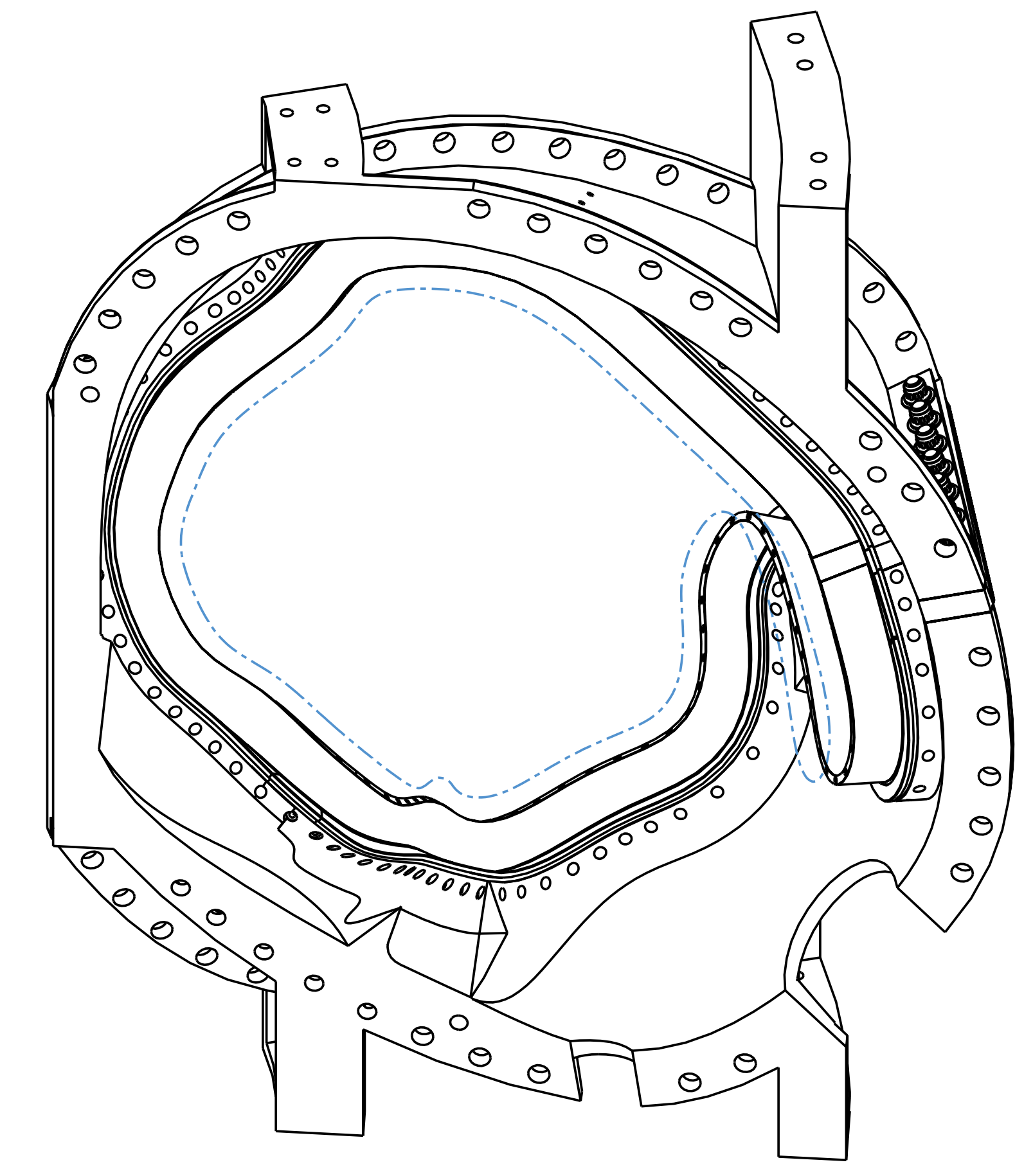
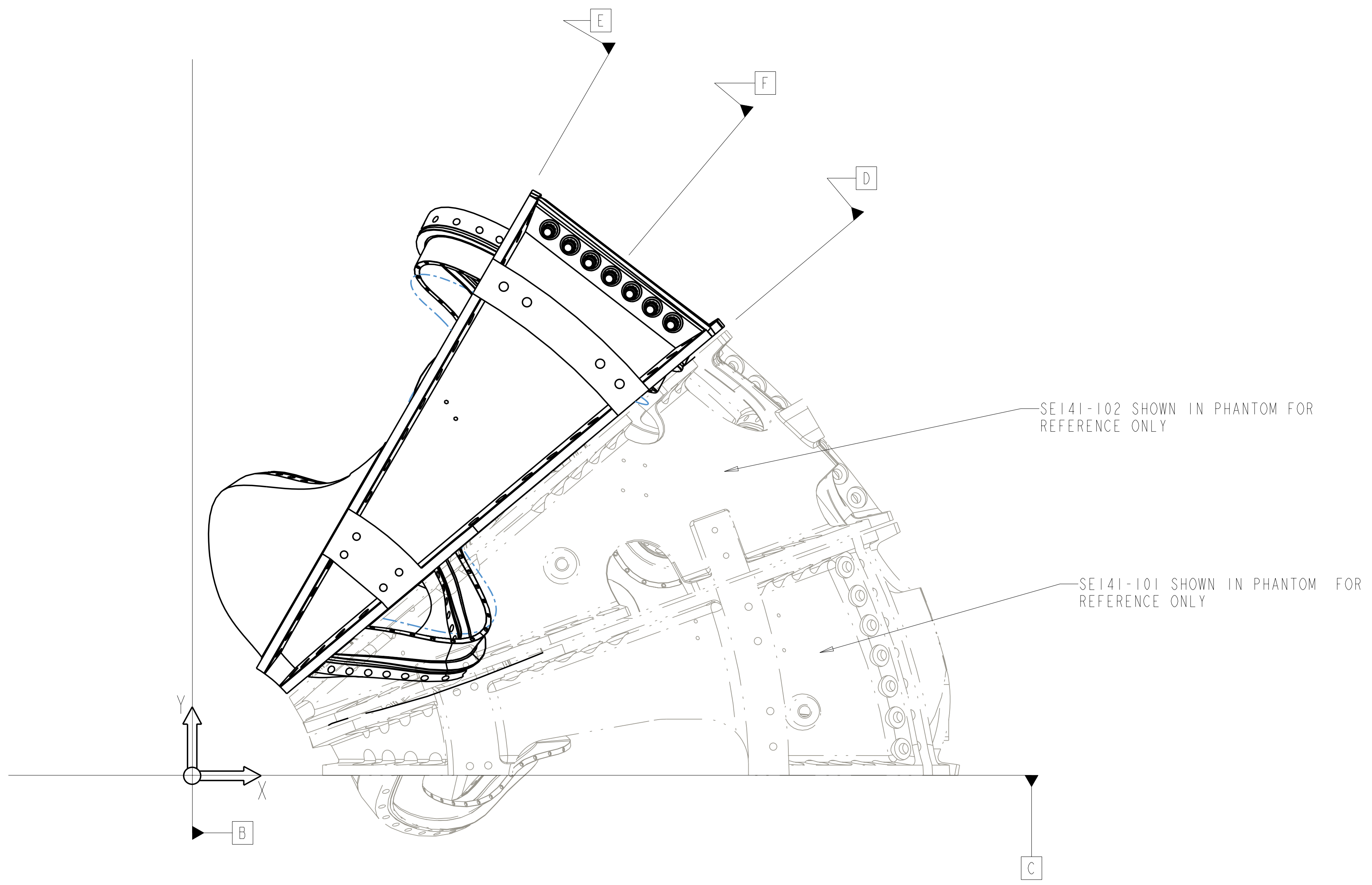
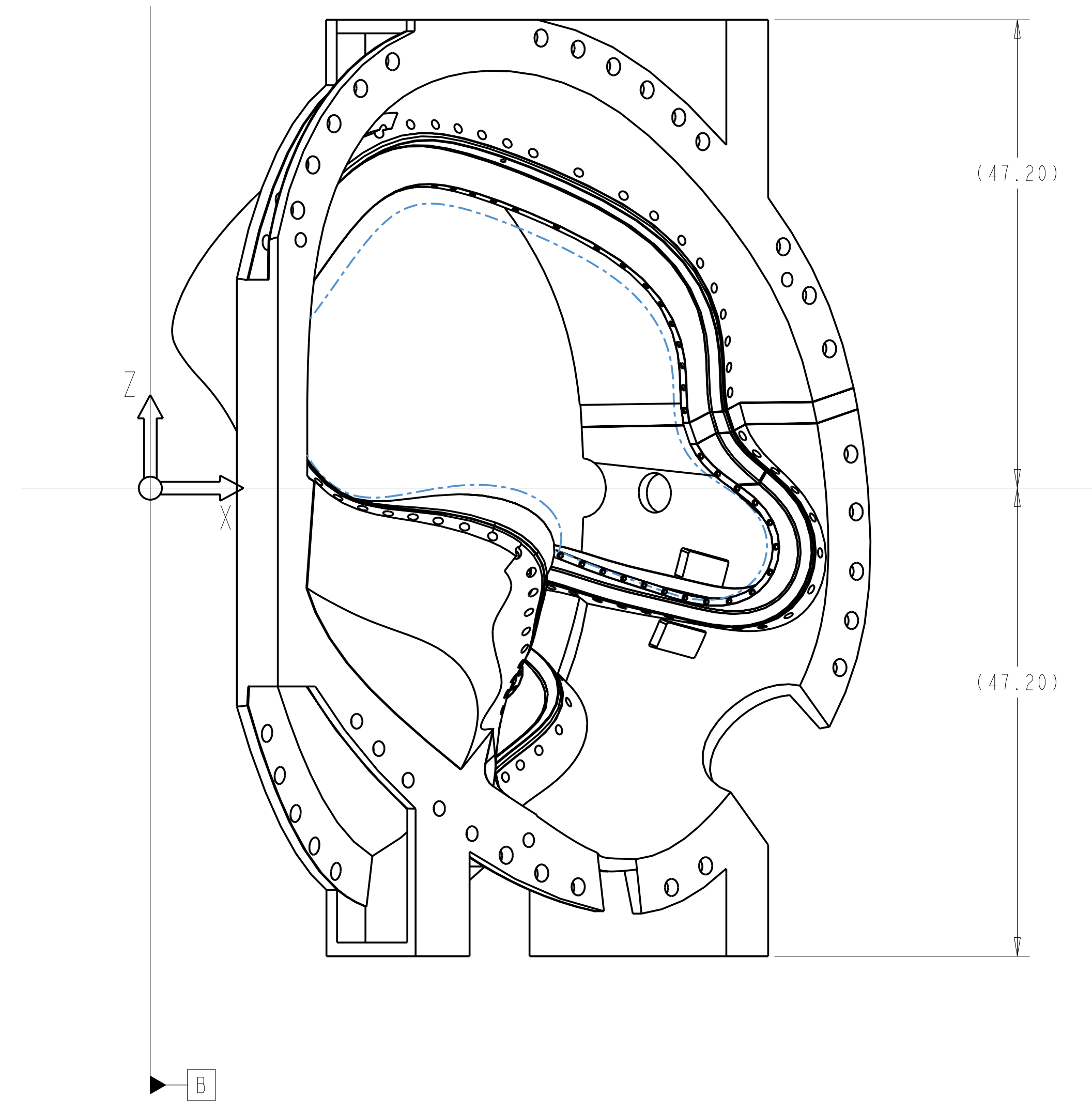


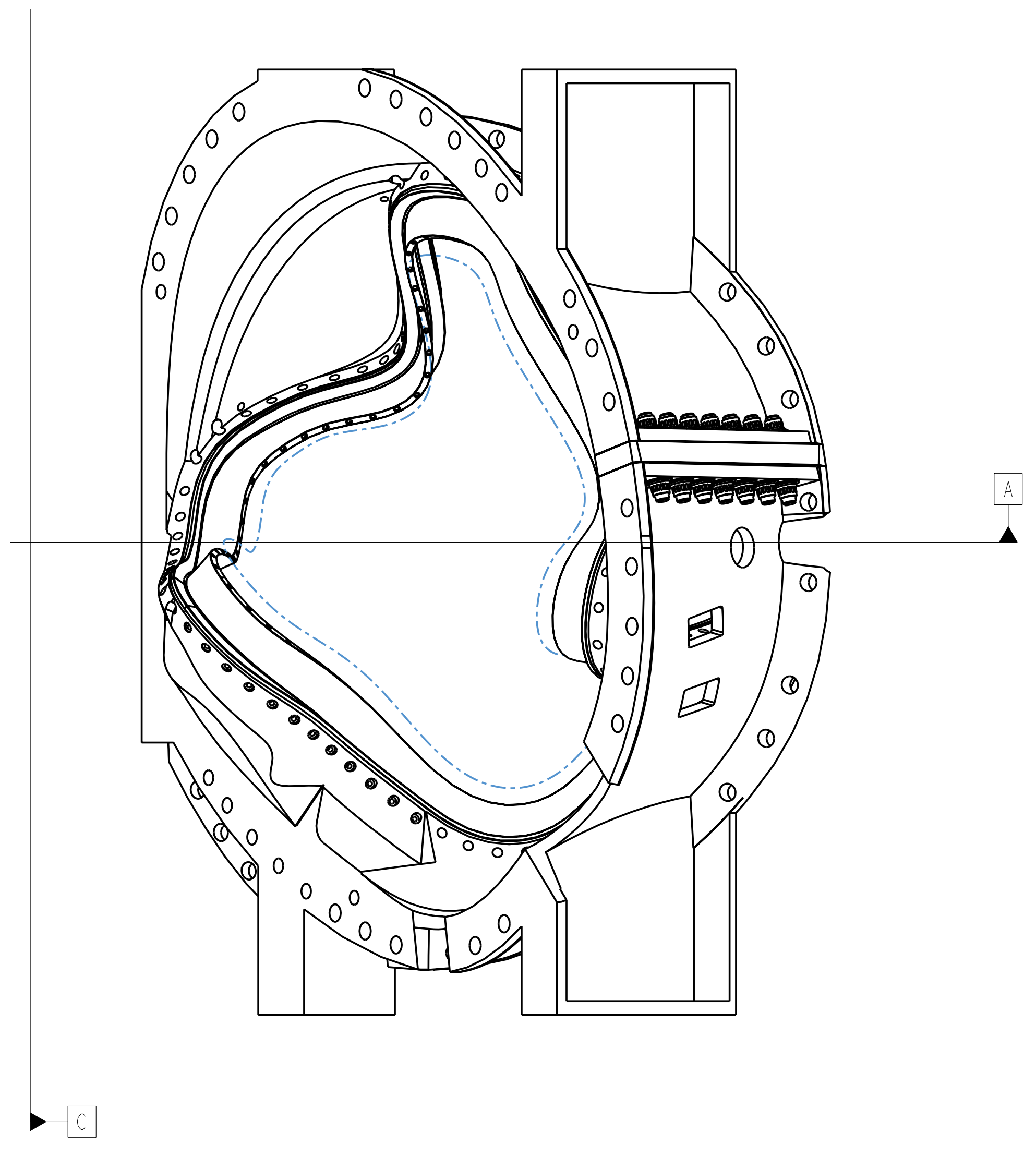
- NOTES:
1. DRAWING PREPARED IN ACCORDANCE WITH ASME Y14.8M-1996
  2. INTERPRET DIMENSIONS AND TOLERANCES PER ANSI Y14.5M-1994.
  3. DIMENSIONS ARE IN INCHES.
  4. DRAWING DEPICTS FINAL MACHINED STATE OF ASSEMBLY DEFINED BY PRO/ENGINEER FILE SE141-103P.ASM.
  5. UNLESS OTHERWISE SPECIFIED, DIMENSIONS ARE RELATED TO DATUM A- (PRIMARY, X-Y PLANE, TOP) DATUM B- (SECONDARY, Y-Z PLANE, SIDE) DATUM C- (TERTIARY, X-Z PLANE, FRONT)
  6. DIMENSIONS APPLY AT ROOM TEMPERATURE. OPERATING TEMP 80 K
  7. DIMENSIONS AND TOLERANCES EXCLUDE PROCESS MATERIAL ALLOWANCES WHICH MAY ADD MASS.
  8. APPROXIMATE MASS = 5239 LBS.
  9. MATCH DRILL OR REAM AS REQUIRED TO ACHIEVE RUNNING FIT BETWEEN PARTS AT ASSEMBLY.
  10. LUBRICATE THREADED SURFACES WITH MOLYCOTE 321R PER MANUFACTURER'S INSTRUCTIONS.
  11. SEE SPECIFICATION, NCSX-CSPEC-141-01-04, FOR ADDITIONAL REQUIREMENTS.



**ISOMETRIC VIEW**  
 SCALE .10



**I**  
 SCALE .10



CAGE CODE	PART OR IDENTIFYING NO	NOMENCLATURE OR DESCRIPTION	MATERIAL	SPECIFICATION	FIND NO
14	-9	NUT, 12PT HEX, 1-3/8-6 UNC-2B	A286	DS141-060P	9
14	-8	WASHER, 2.75 OD X 1.56 ID X .5 THK	A286	DS141-079P	8
7	-7	STUD, 1-3/8-6 UNC-2A	A286	DS141-036P	7
14	-6	WASHER, 2.75 OD X 1.56 ID X .06 THK	GIICR	NEMA LI 1 - 1998	6
14	-5	BUSHING, 1.376 ID X .031 THK x 1.250 LG	GIICR	NEMA LI 1 - 1998	5
AR	-4	INSULATING SHEET, .031 +/- .0065 THK	GIICR	NEMA LI 1 - 1998	4
I	SE141-078P	PROTOTYPE POLOIDAL BREAK SHIM W/ BUSHING	CAST SS	ASTM A240	3
I	SE141-116P	PROTOTYPE WINDING FORM	CAST SS	SEE NOTE 11	2
X	SE141-103P	PROTOTYPE TYPE-C WINDING FORM ASM	---	---	1

← NEXT ASSEMBLY

**PARTS LIST**

NO REPRESENTATION OR WARRANTY, EXPRESSED OR IMPLIED, IS MADE AS TO THE ACCURACY, COMPLETENESS OR USEFULNESS OF THE INFORMATION OR STATEMENTS CONTAINED IN THESE DRAWINGS, OR THAT THE USE OR DISCLOSURE OF ANY INFORMATION, APPARATUS, METHOD OR PROCESS DISCLOSED IN THESE DRAWINGS MAY NOT INFRINGE PRIVATE RIGHTS OF OTHERS. NO LIABILITY IS ASSUMED WITH RESPECT TO THE USE OF, OR FOR DAMAGES RESULTING FROM THE USE OF, ANY INFORMATION, APPARATUS, METHOD OR PROCESS DISCLOSED IN THESE DRAWINGS. DRAWINGS MADE AVAILABLE FOR INFORMATION TO BIDDER ARE NOT TO BE USED FOR OTHER PURPOSES, AND ARE TO BE RETURNED UPON REQUEST OF THE FORWARDING CONTRACTOR.

**P** THIS DRAWING PRODUCED ON PRO-ENGINEER

REV	DESCRIPTION	BY	DATE	CHK	DEPT	DATE	PE	REQ	DATE	ORNL	DOE	DATE

SCALE NOTED	DES T. BROWN	4-27-04
TOLERANCES UNLESS OTHERWISE SPECIFIED	DRW PAUL MILLER	5-05-04
FRACTIONS	CHK M. COLE	6-21-04
XX DECIMALS ±.01	DEPT :	
XXX DECIMALS ±.005	PE D. WILLIAMSON	6-21-04
ANGLES ±0°15'	CR :	
BREAK SHARP EDGES .06 MAX	PJ :	
FINISH .125 UNLESS OTHERWISE SPECIFIED	REO :	
	PPPL DRFT J. SIEGEL	6-21-04

**UT-BATTELLE** Oak Ridge National Laboratory managed for the DEPARTMENT OF ENERGY under U.S. GOVERNMENT contract DE-AC05-00OR22725 UT-BATTELLE, LLC, Oak Ridge, Tennessee

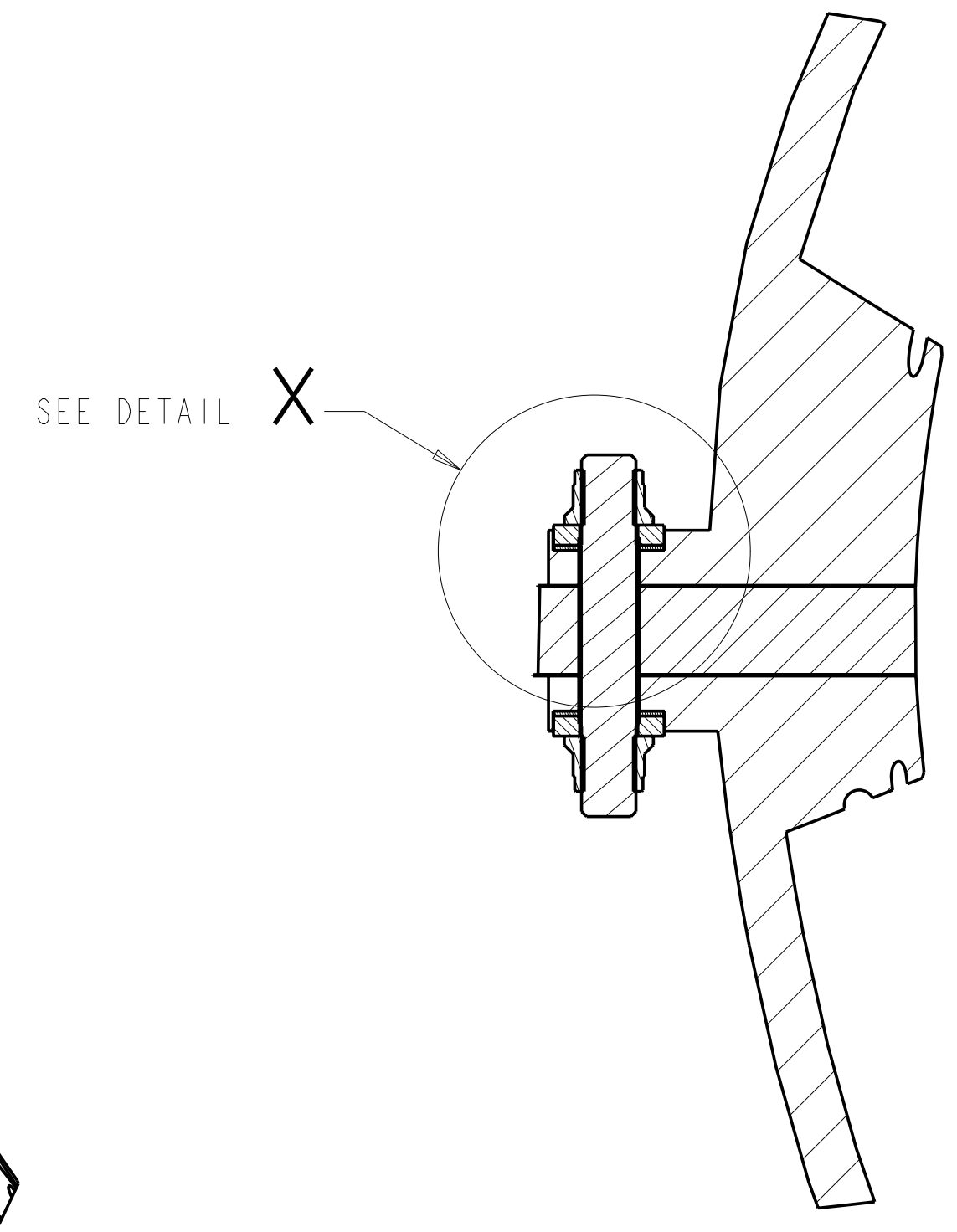
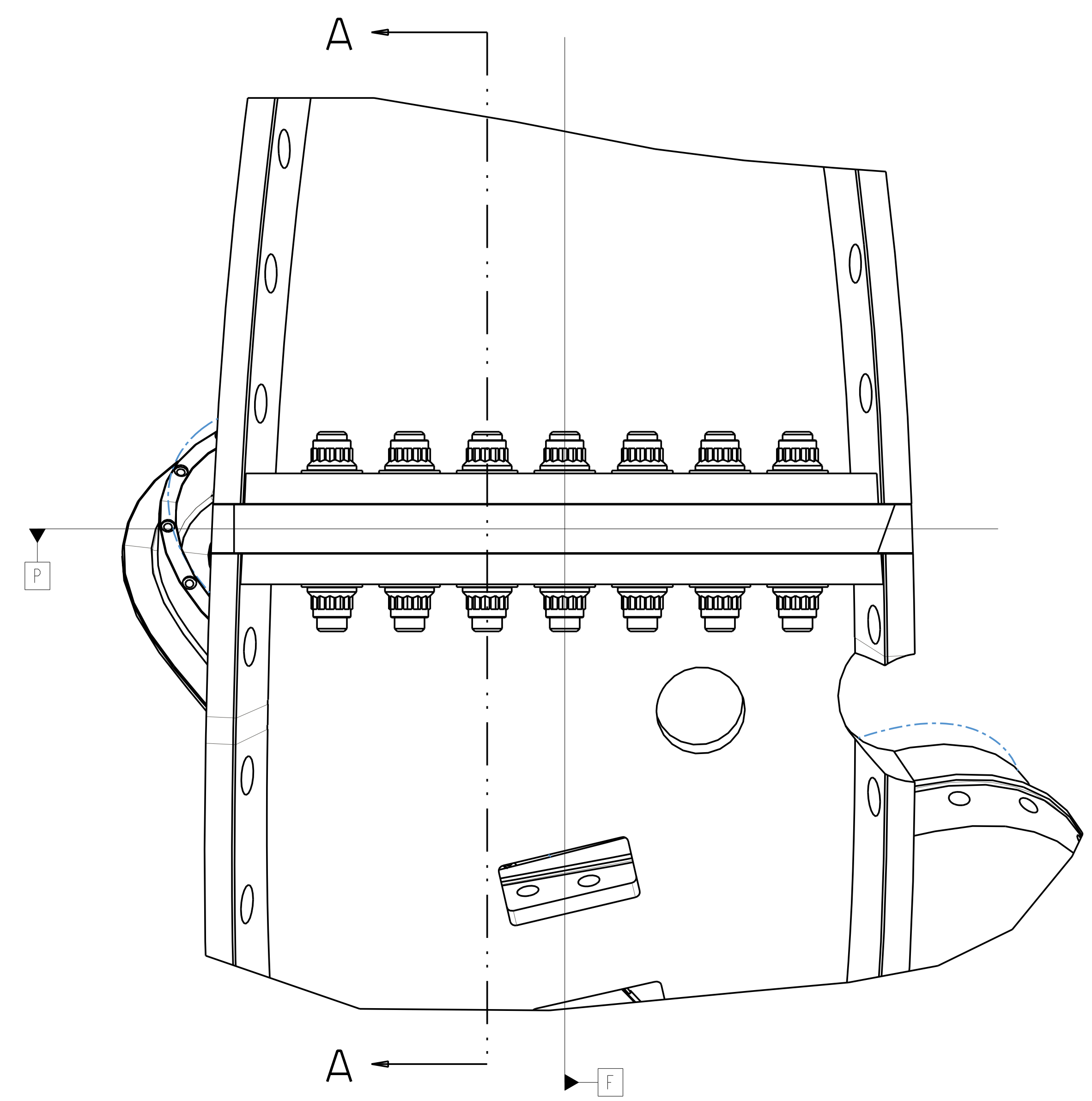
**NATIONAL COMPACT STELLARATOR EXPERIMENT**

**PROTOTYPE TYPE-C WINDING FORM ASSEMBLY**

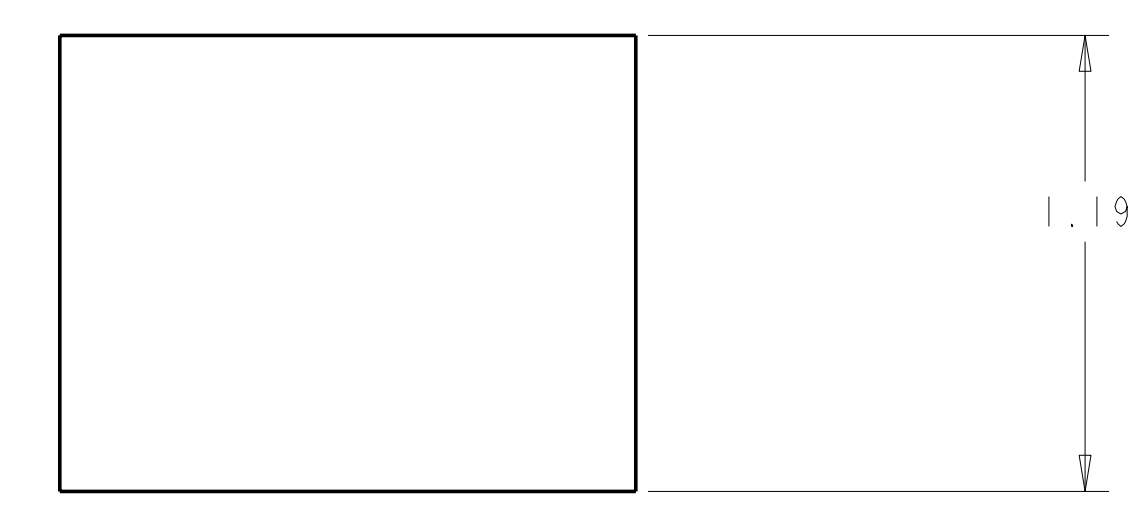
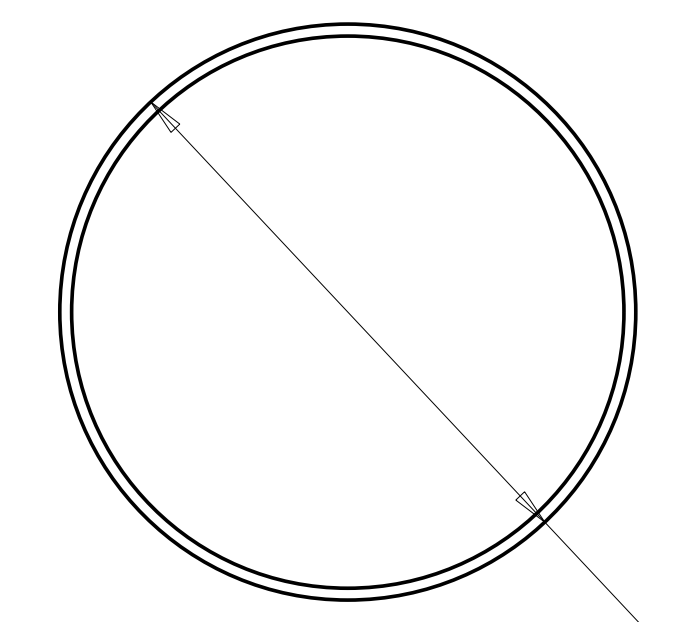
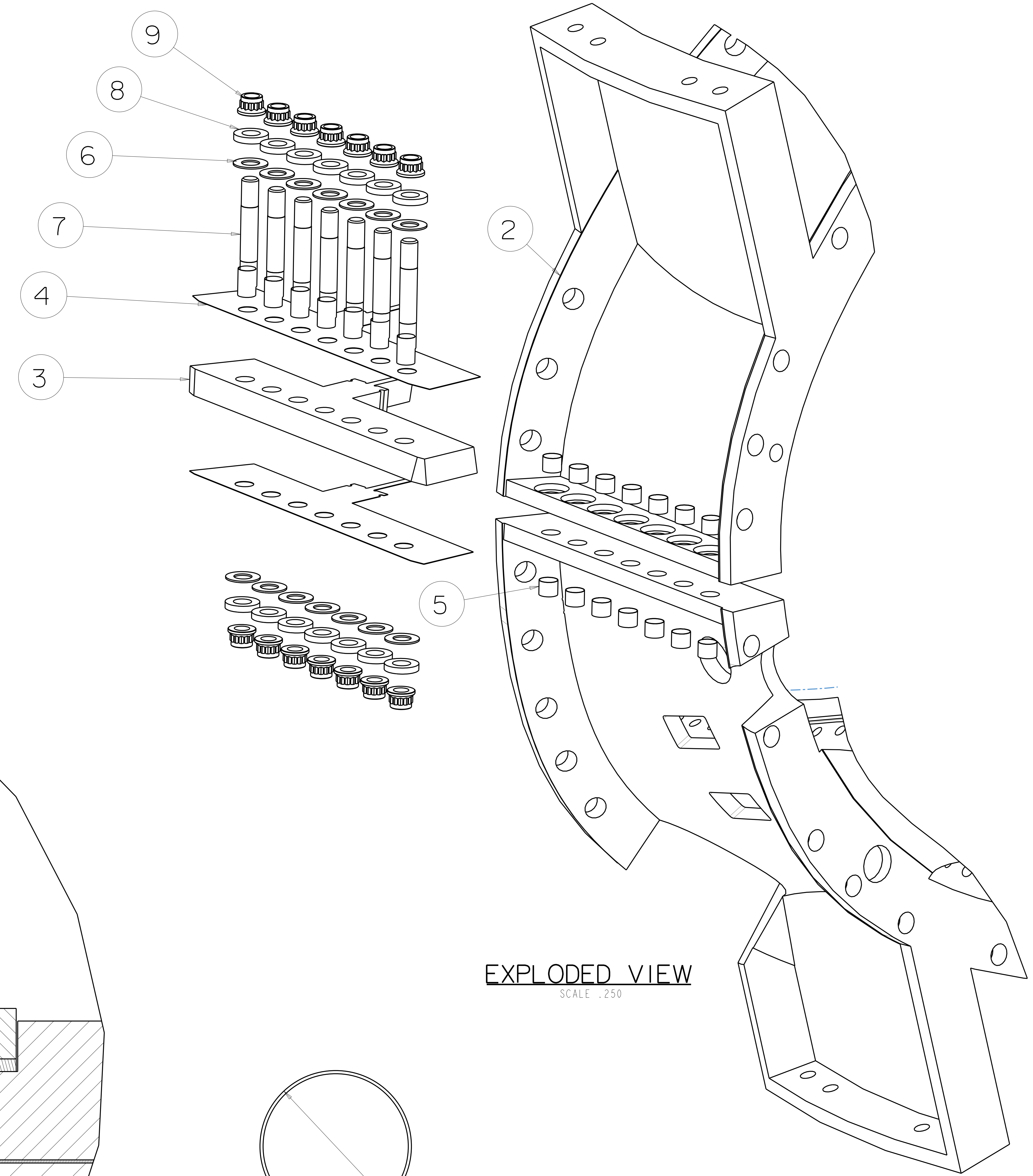
VERSION NO.	PLANT	BLDG	FL	SHT	OF	TYPE	CLASS
16	X-10	5700	3	1	2	S	U
RELEASE LEVEL							
WIP							

SE141-103P REV 0

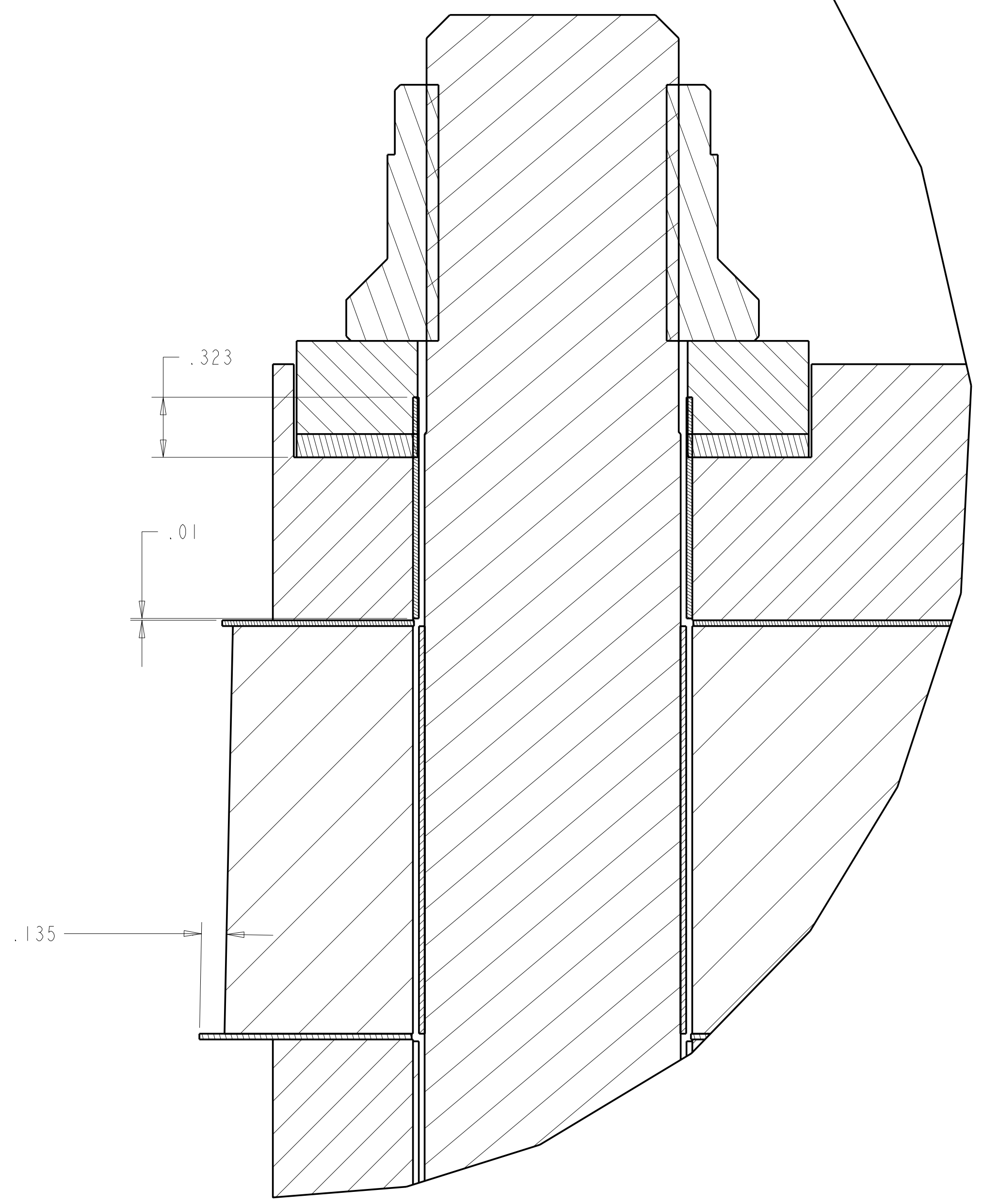
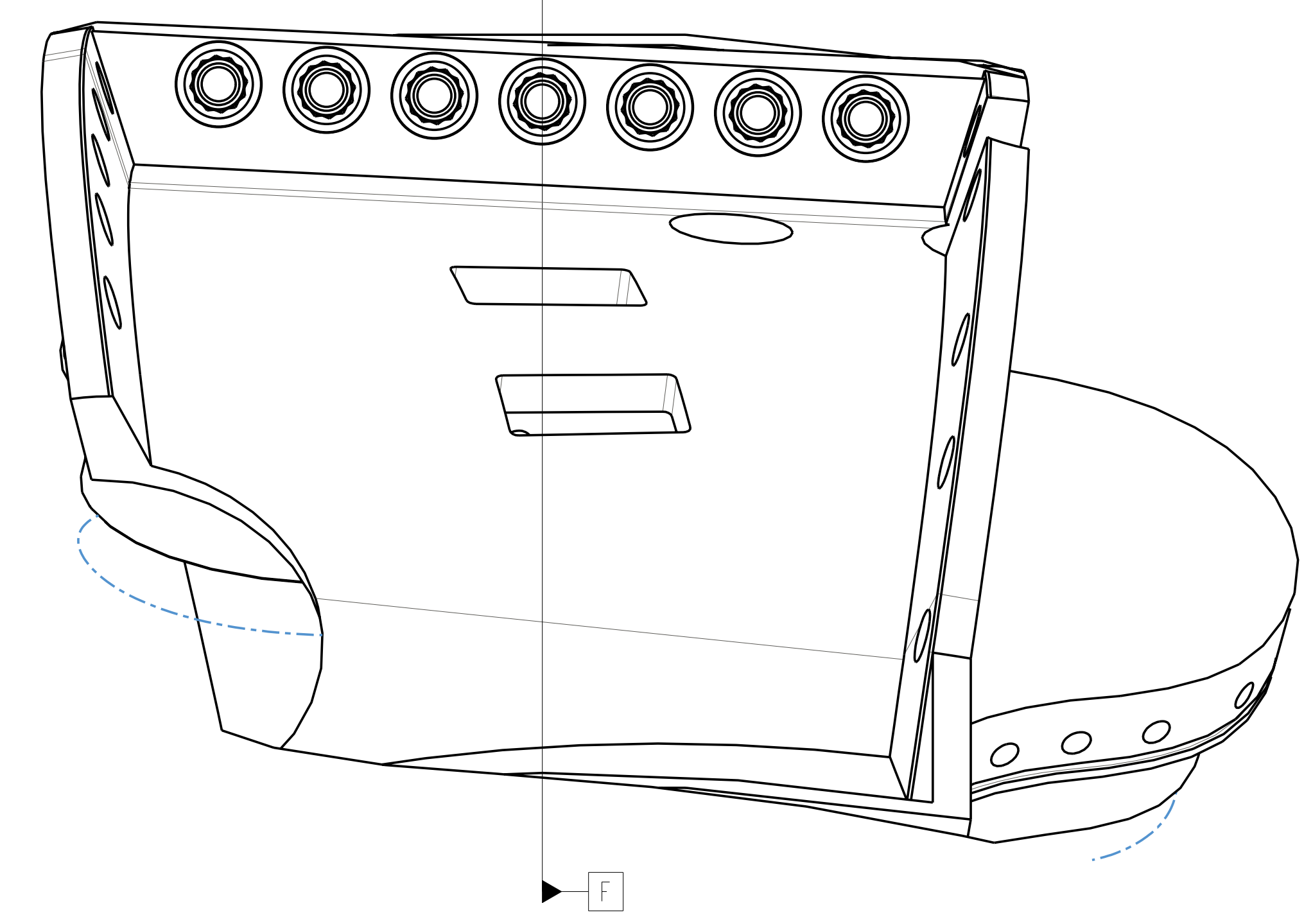
NAME: X:\WORK\OBJECTS\SE141-103P\_1 DATE: 24-Jun-04 11:50:28



SECTION A-A



5 SCALE 2.0



Oak Ridge National Laboratory managed for the DEPARTMENT OF ENERGY under U.S. GOVERNMENT contract DE-AC05-00OR22725 UT-BATTELLE, LLC, Oak Ridge, Tennessee PROJECT NAME							
<b>UT-BATTELLE</b> <b>NATIONAL COMPACT STELLARATOR EXPERIMENT</b>							
<b>PROTOTYPE WINDING FORM ASSEMBLY</b>							
VERSION NO.	PLANT	BLDG	FL	SHT	OF	TYPE	CLASS
16	X-10	5700	3	2	2	S	U
RELEASE LEVEL		REV					
WIP		0					

UT-BATTELLE, LLC, Oak Ridge, Tennessee

UT-BATTELLE, LLC, Oak Ridge, Tennessee