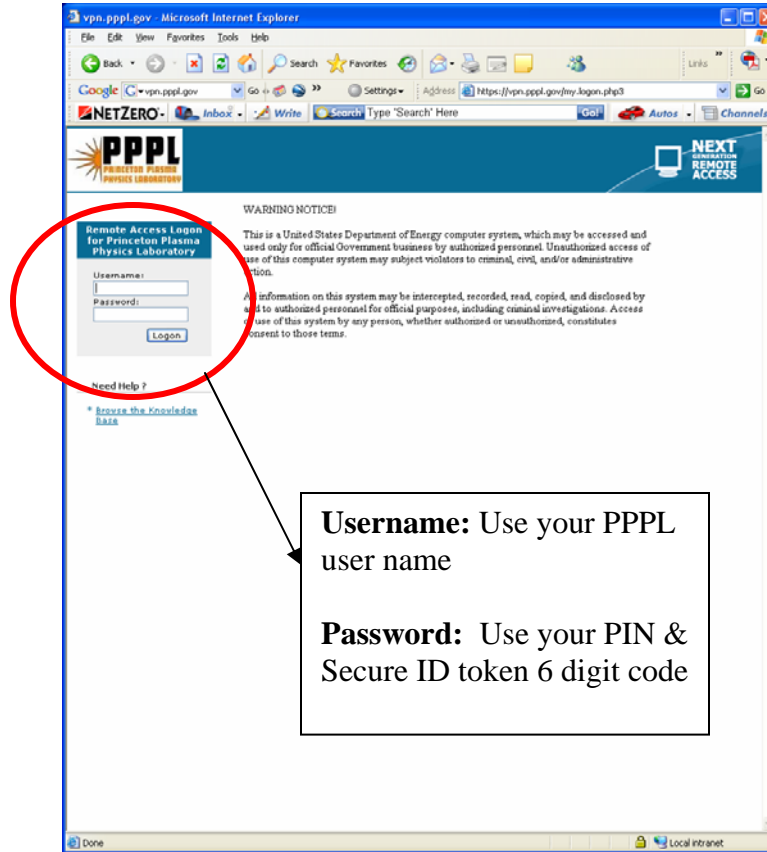
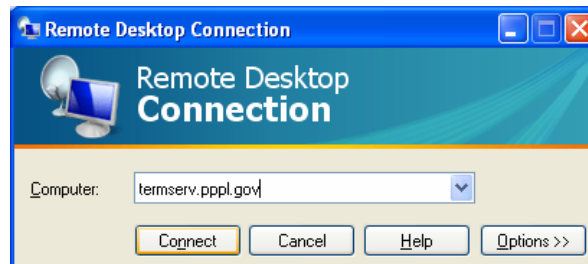
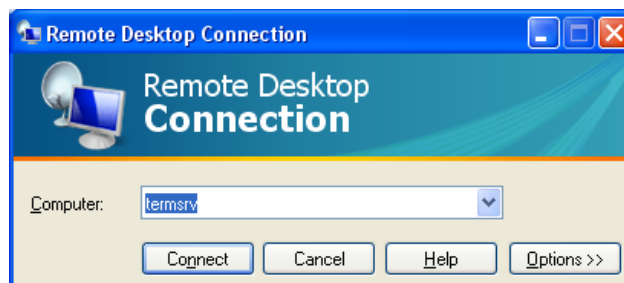


**Access to NCSX Drawings Using a PC or Power PC MAC**  
**(This will NOT work for an INTEL MAC, VISTA, or 64 Bit Windows)**

**Step #1: Authenticate through PPPL Firewall via VPN authentication process (vpn.pppl.gov)**

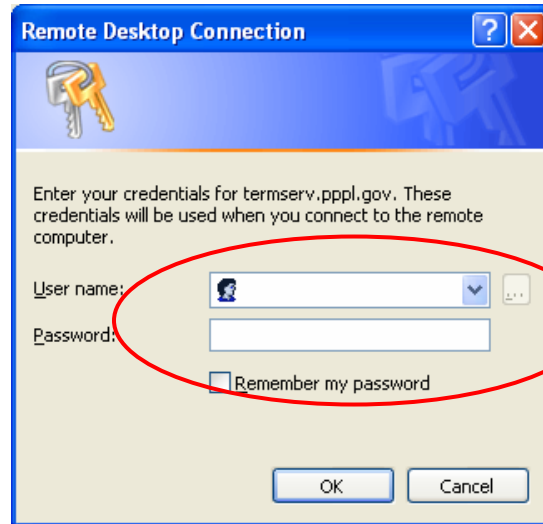


**Step #2: Open Remote Desktop – Use Pulldown menu to select “termsrv” or type in “termserv.pppl.gov”**



**Access to NCSX Drawings Using a PC or Power PC MAC  
(This will NOT work for an INTEL MAC, VISTA, or 64 Bit Windows)**

**Step #3: Enter User name and Password.**

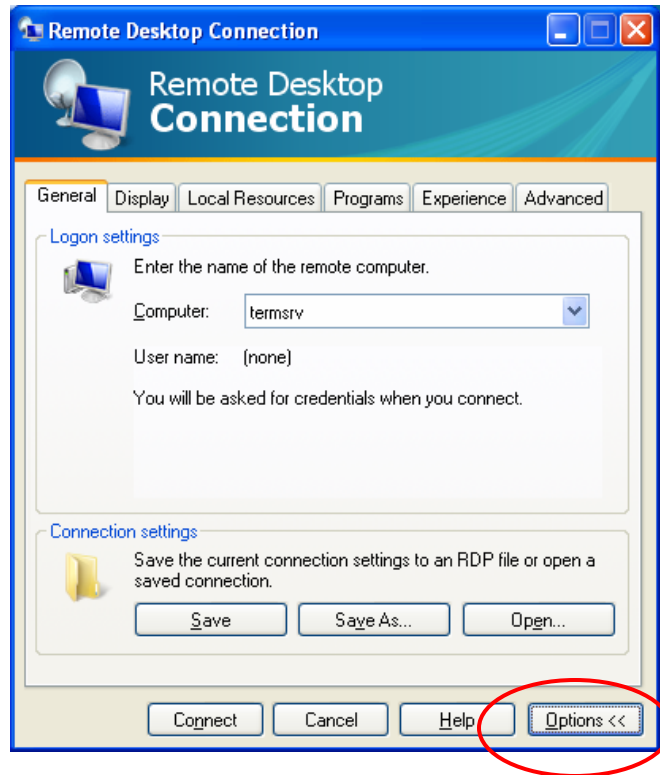


**User name:** Enter User Name for your PPPL user account.

**Password:** Enter Password for your PPPL user account

**Step #4: If desired by the User, one can save the document to their local hard drive to preclude having to go through the entire setup as follows:**

- Select "Options" tab:

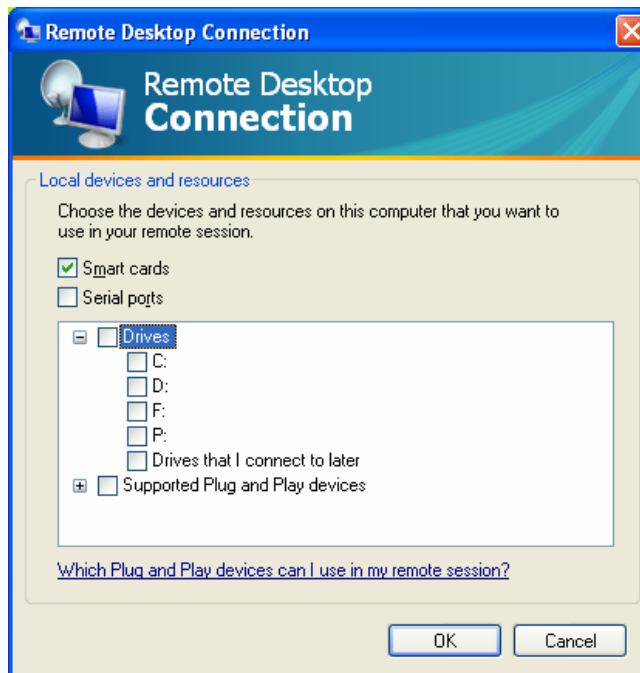


**Access to NCSX Drawings Using a PC or Power PC MAC  
(This will NOT work for an INTEL MAC, VISTA, or 64 Bit Windows)**

- Select “Local Resources” tab and then “More” tab to get to drivers.

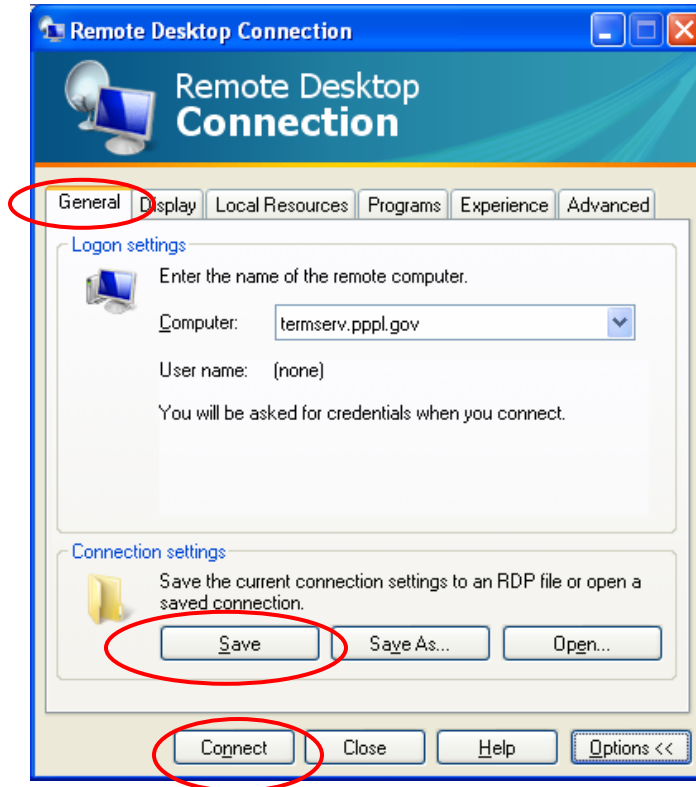


- Select your drive that you desire to load Terserv on and click “OK”. For a MAC, select “Local Drives” and select “Disc Drives” and then click “OK”.



**Access to NCSX Drawings Using a PC or Power PC MAC  
(This will NOT work for an INTEL MAC, VISTA, or 64 Bit Windows)**

- **Return to Remote Desktop screen and Select “General” tab and click “Save” => won’t have to go through the entire setup again! Then click “Connect” to connect to termserv.**



**Access to NCSX Drawings Using a PC or Power PC MAC  
(This will NOT work for an INTEL MAC, VISTA, or 64 Bit Windows)**

- **Step # 5: Once on “termserv”, you can connect directly to the NCSX Drawings page by typing in the following URL:**

**<http://cadd-web.pppl.gov/NCSX/Menu00.htm>**

**You can also ave this page as a favorite or your home page to facilitate access.**

PPPL - Engineering Drawing Interface - Group Selection - Microsoft Internet Explorer

File Edit View Favorites Tools Help

Back Forward Stop Home Search Favorites Settings Address <http://cadd-web.pppl.gov/NCSX/Menu00.htm> Go

NETZERO Inbox Write Search Type 'Search' Here Go Autos Channels

**PPPL**  
PRINCETON PLASMA  
PHYSICS LABORATORY

## Engineering Drawing Interface

Drawing Group Selection Menu A

Below is a list of the valid Drawing Group Selections for the NCSX Project:  
*Click on the desired Group.*

Group	Group Title
<a href="#">100</a>	Stellerator Core
<a href="#">300</a>	Auxiliary Systems
<a href="#">400</a>	Electrical Power System
<a href="#">600</a>	Facility Systems
<a href="#">700</a>	Machine Assembly

Select desired “grouping” of drawings

Done Local intranet

**Access to NCSX Drawings Using a PC or Power PC MAC**  
 (This will NOT work for an INTEL MAC, VISTA, or 64 Bit Windows)

**Step #6: Select the WBS level and then the desired drawing within that WBS element and download and save to their local hard drive.**

