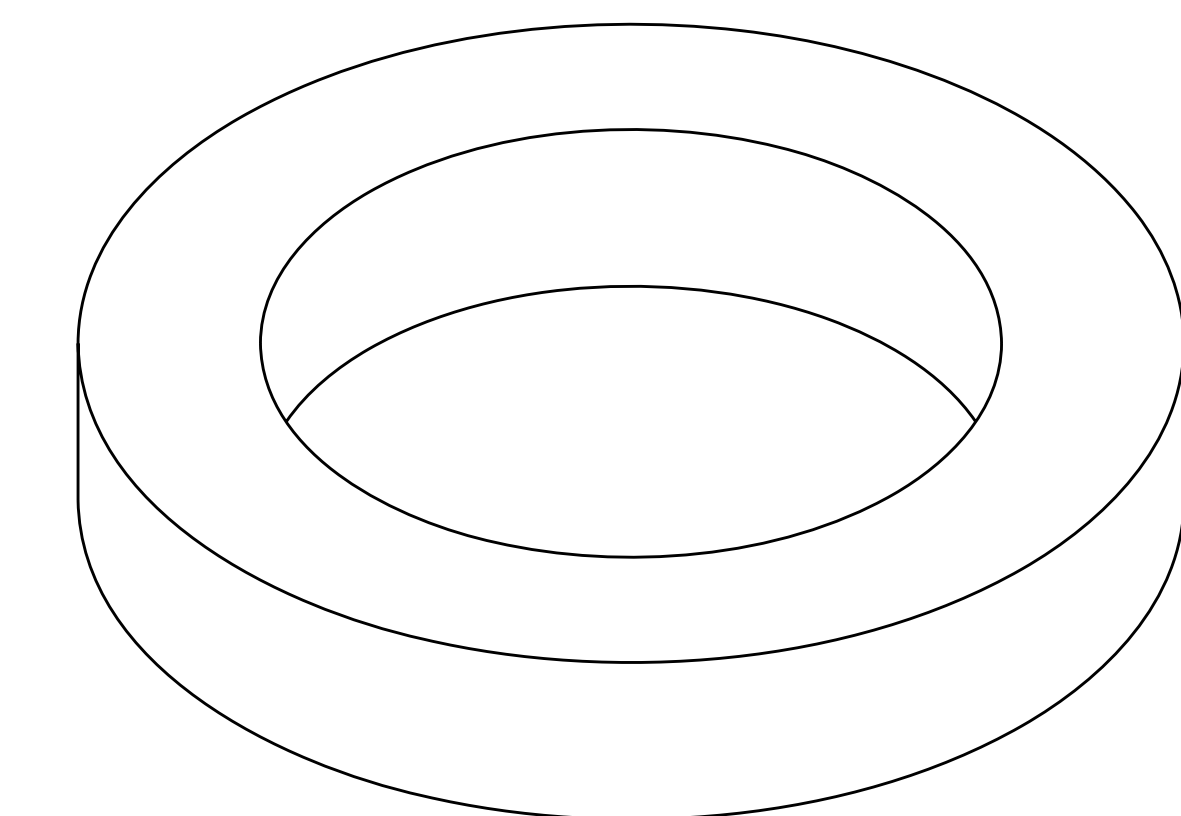
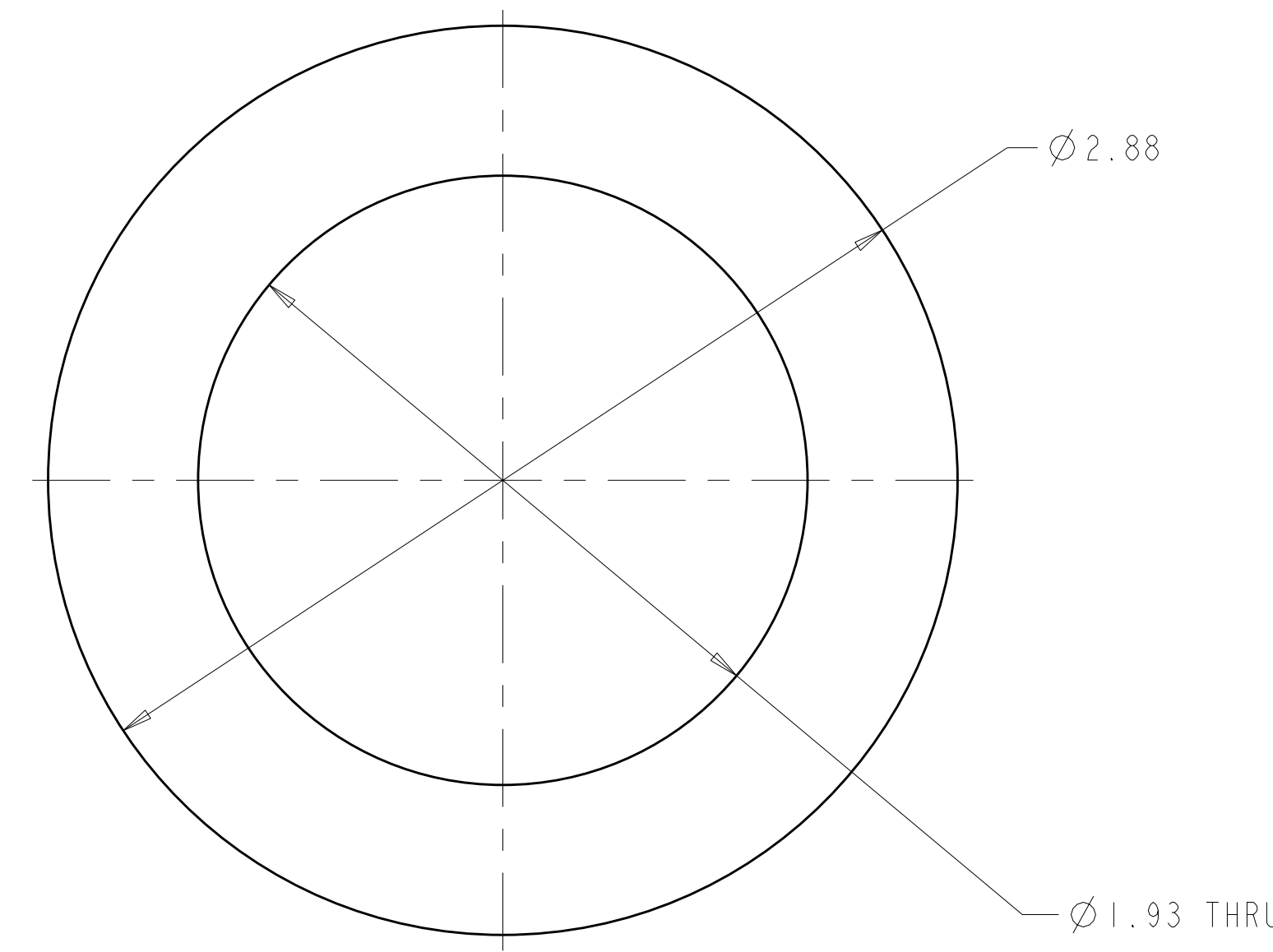
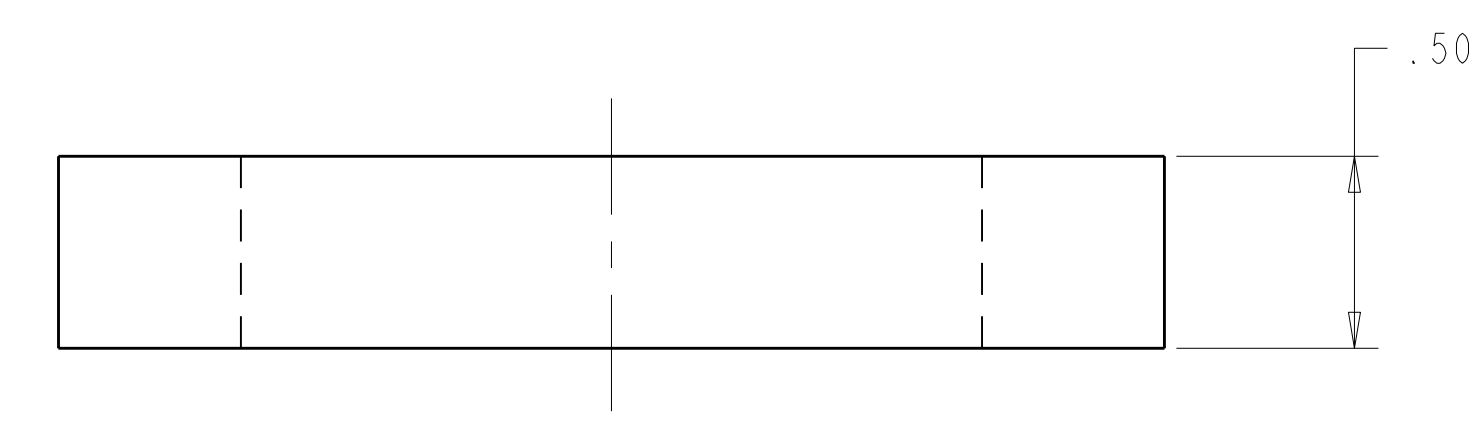


NOTES

1. DRAWING PREPARED IN ACCORDANCE WITH ASME Y14.100-2004.
2. INTERPRET DIMENSIONS AND TOLERANCES PER ASME Y14.5M-1994.
3. DIMENSIONS ARE IN INCHES
4. MAGNETIC PERMEABILITY NOT TO EXCEED 1.02 AS TESTED BY A SEVERN INDICATOR. AVAILABLE FROM:  
SEVERN ENGINEERING  
AUBURN, ALABAMA 36830  
WWW.SEVERNGINEERING.COM



ISOMETRIC VIEW  
SCALE 2.00



-1 WASHER  
SCALE 2.000

**RFD-14-029: Approved change in washer material from ASTM B670 to ASTM B637 for SE140-208 (r0-a) and from ASTM B265 Grade 5 to ASTM B348-5 Grade 5 on SE140-193 (r2-a). (See RFD-14-029 for details)**

SE	AR	AR	AR	AR	CAGE CODE	PART OR IDENTIFYING NO	NOMENCLATURE OR DESCRIPTION	MATERIAL	SPECIFICATION	FIND NO
SE100-001	AR	AR	AR	AR		-1	WASHER	UNS N07718 OR UNS R56400	ASTM B670 OR ASTM B265 GRADE 5	
PARTS LIST										

**RELEASED FOR FABRICATION / INSTALLATION**  
PPPL Drafting

REV	DESCRIPTION	BY	DATE	CHK	DEPT	DATE	PE	REQ	DATE	ORNL	DOE	DATE
2	REVISED MATERIAL PER ECN# 5244	GM	07/07	MC		07/07	DW		07/07			
1	REVISED MATL PER ECN-5232	DW	3/07	MC								
0	ORIGINAL ISSUE	GM	02/07									

SCALE NOTED	DES: D WILLIAMSON 02/07	DRW: G MCGINNIS 02/07	CHK: M COLE 02/07	SECT: :	DEPT: :	PE: :	CR: :	PJ: :	REQ: :	PPPL DRFT J SIEGEL 02/07	VERSION NO. 2	PLANT ORNL	BLDG 5700	FL 3	SHT 1	OF 1	TYPE S	CLASS U
TOLERANCES UNLESS OTHERWISE SPECIFIED																		
FRACTIONS ±.01																		
XX DECIMALS ±.01																		
XXX DECIMALS ±.005																		
ANGLES ±0°15'																		
BREAK SHARP EDGES OR MAX FINISH .125 UNLESS OTHERWISE SPECIFIED																		
											RELEASE LEVEL Fabrication		SE140-193		REV 2			

NO REPRESENTATION OR WARRANTY, EXPRESSED OR IMPLIED, IS MADE AS TO THE ACCURACY, COMPLETENESS OR USEFULNESS OF THE INFORMATION OR STATEMENTS CONTAINED IN THESE DRAWINGS, OR THAT THE USE OR DISCLOSURE OF ANY INFORMATION, APPARATUS, METHOD OR PROCESS DISCLOSED IN THESE DRAWINGS MAY NOT INFRINGE PRIVATE RIGHTS OF OTHERS. NO LIABILITY IS ASSUMED WITH RESPECT TO THE USE OF, OR FOR DAMAGES RESULTING FROM THE USE OF, ANY INFORMATION, APPARATUS, METHOD OR PROCESS DISCLOSED IN THESE DRAWINGS. DRAWINGS MADE AVAILABLE FOR INFORMATION TO BIDDER ARE NOT TO BE USED FOR OTHER PURPOSES, AND ARE TO BE RETURNED UPON REQUEST OF THE FORWARDING CONTRACTOR.

**P** THIS DRAWING PRODUCED ON PRO-ENGINEER