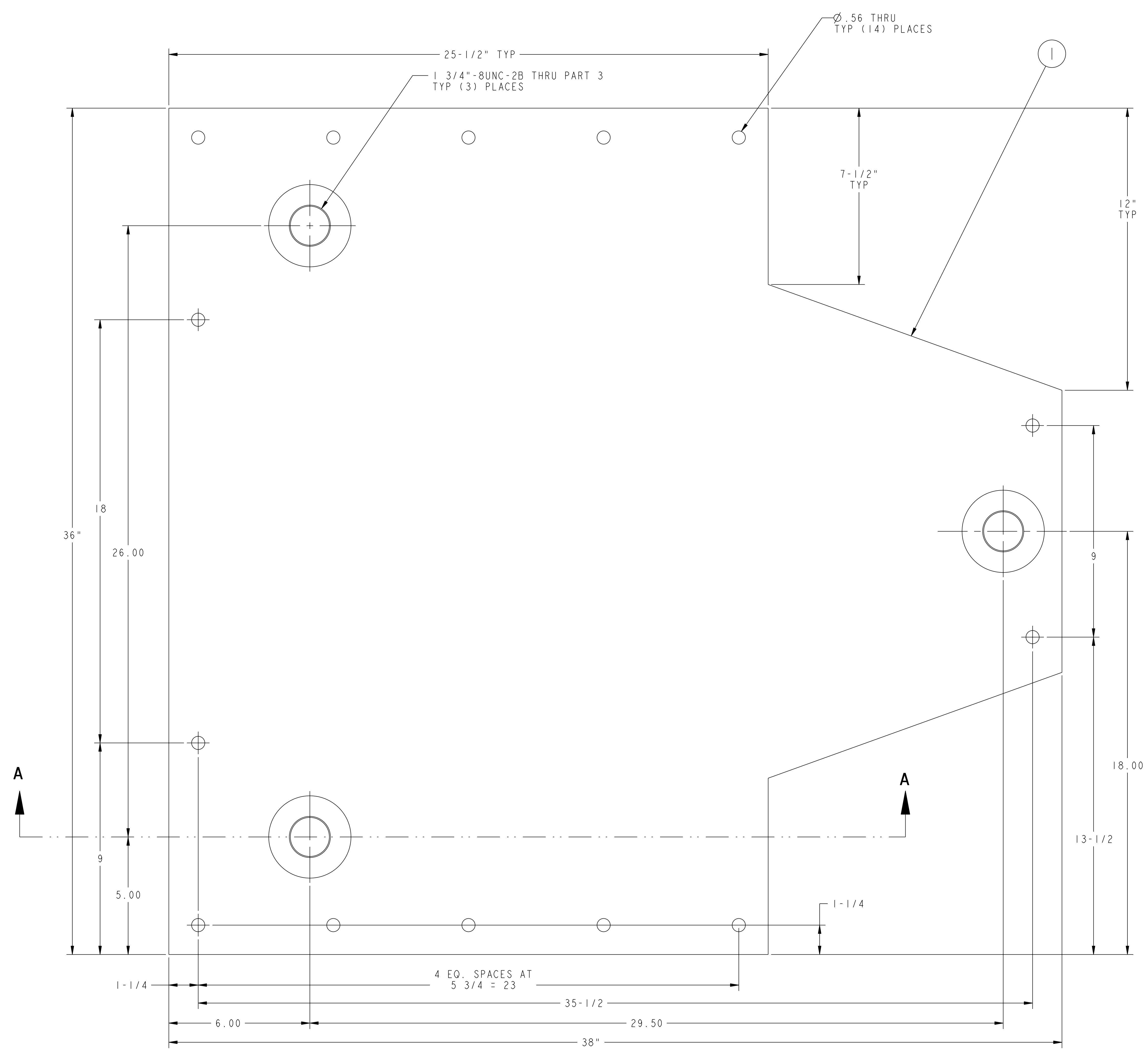


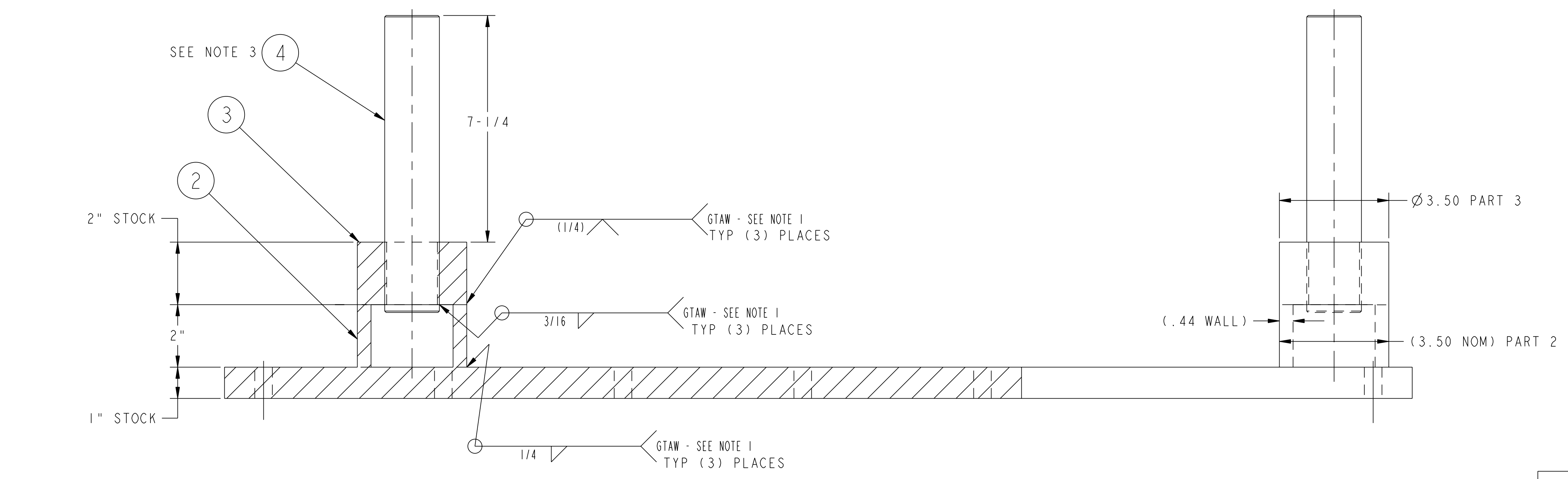
NO.	REVISION	BY	CH	SUP	APPROVED	DATE
-----	----------	----	----	-----	----------	------



NOTES

1. WELDING SHALL BE PERFORMED IN ACCORDANCE WITH THE REQUIREMENTS OF AWS D1.1 OR PPPL PROCEDURE ENG-037. VISUAL WELD INSPECTION SHALL BE PERFORMED IN ACCORDANCE WITH THE ACCEPTANCE CRITERIA OF AWS D1.1 Section 6.
2. ALL HOLES TO BE MACHINED AFTER ALL WELDS ARE COMPLETE.
3. PART 4, THREADED ROD, TO BE MADE FROM McMASTER-CARR #98957A660 (3 FT. LENGTH) OR EQUIVALENT. MUST MEET ASTM A193 GRADE B7 REQUIREMENTS OR BETTER.

RFD-18-001 permitted either GTAW or GMAW welds. See RFD-18-001 for details)



SECTION A-A

RELEASED FOR FABRICATION / INSTALLATION
PPPL Drafting

01 ASSY	PART NO.	DRAWING NO.	NOMENCLATURE OR DESCRIPTION	MATERIAL	QTY REQD
	3	4	THIS DWG	1 3/4"-8UNC-2A x 9 1/2" LG THREADED ROD	ASTM A193 GRADE B7
	3	3	THIS DWG	PIPE TOP PLATE	ASTM A36
	3	2	THIS DWG	SUPPORT PIPE - 3" PIPE SCHEDULE 160	ASTM A120
	1	1	THIS DWG	BASE SUPPORT PLATE	ASTM A36
			THIS DWG	BASE SUPPORT WELDMENT	

PARTS LIST

COMPUTER GENERATED DRAWING CHANGES NOT PERMITTED		CENTRAL FILES:		PRINCETON PLASMA PHYSICS LABORATORY	
Pro E		UNLESS OTHERWISE SPECIFIED		PRINCETON UNIVERSITY	
DO NOT VERIFY INFORMATION BY SCALING DRAWING		DIMENSIONS ARE IN INCHES MACHINE SURFACES		NATIONAL COMPACT STELLARATOR EXPERIMENT	
		BREAK SHARP EDGES .005/.020		FIELD PERIOD ASSEMBLY	
		TOLERANCES NON-CUMULATIVE		VACUUM VESSEL SUPPORT ASSEMBLY	
WEIGHT		DECIMAL-INCH FRACTIONS		BASE SUPPORT WELDMENT	
366.0 lbs		.XX ±.000 .0125 ±.000 .XX ±.005 .0125 ±.005		DSN: L. MORRIS 8-2-2007	
MODEL NAME		NEXT ASSEMBLY		CHK: M. COLE 8-2-2007	
SE184-051-01				ENGR: T. BROWN 8-2-2007	
WELDING ENGINEER		6.GETTELFINGER 8-2-2007		SUPV: J. SIEGEL 8-2-2007	
RELEASE LEVEL: Fabrication		DWG VERSION NO: 10		DRAWING NO: SE184-051	
				SHEET 1 OF 1	
				REV 0	

NCSX-SE184-051