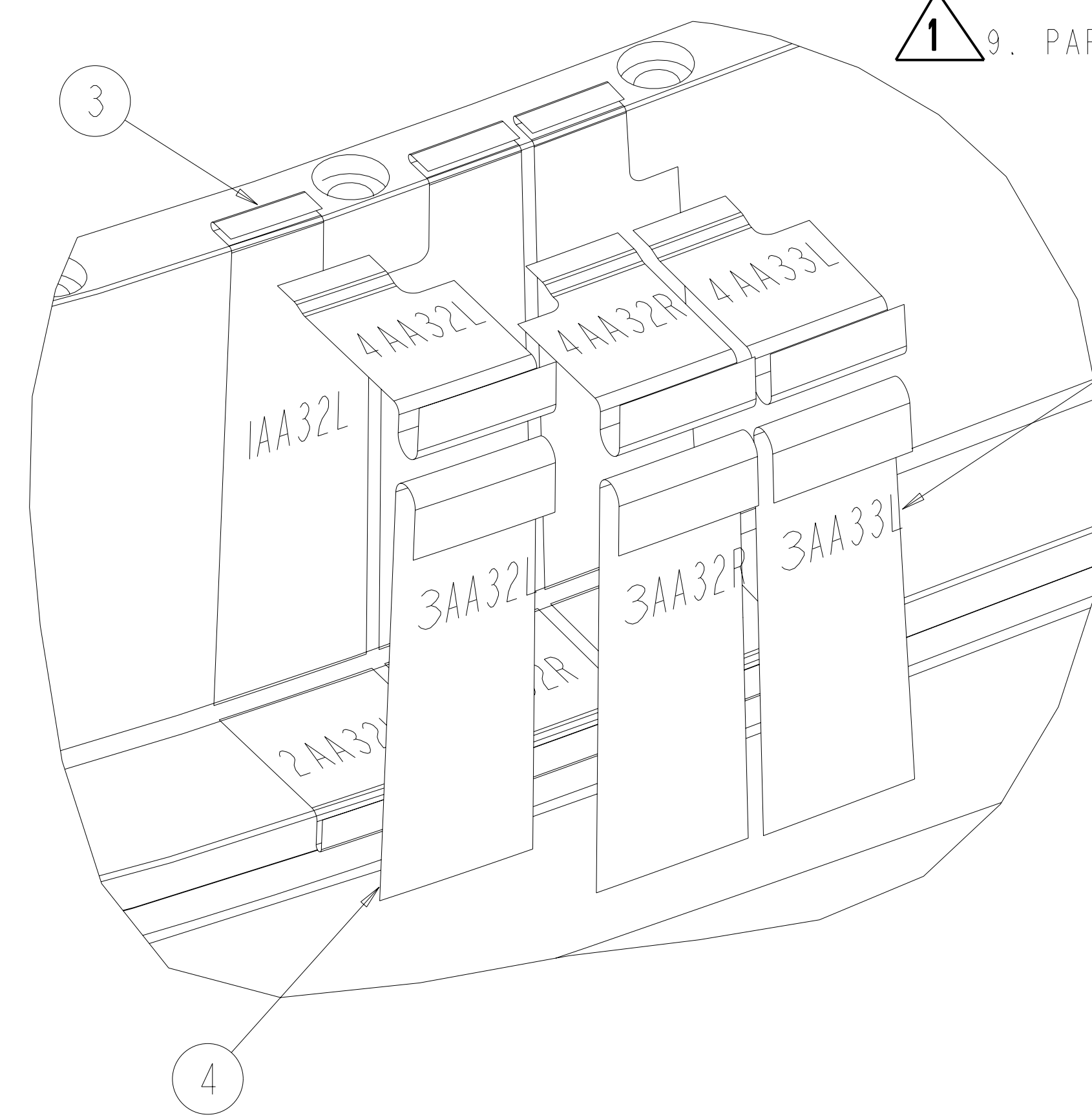


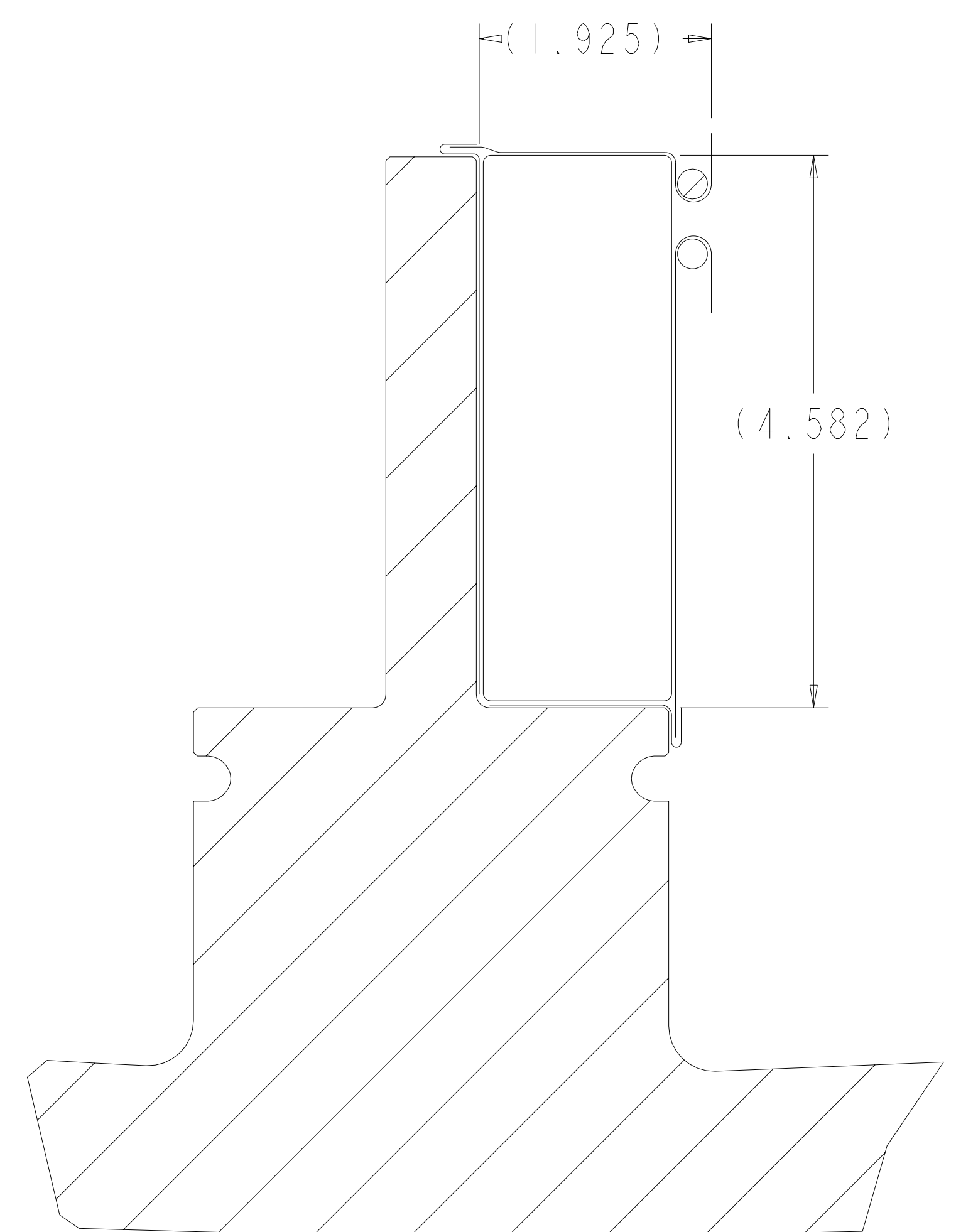
① TYPE-B SIDE-B-ASM  
SCALE 0.250

- NOTES:
1. DRAWING PREPARED IN ACCORDANCE WITH ASME Y14.100-2000.
  2. INTERPRET DIMENSIONS AND TOLERANCES PER ASME Y14.5M-1994.
  3. DIMENSIONS ARE IN INCHES.
  4. DRAWING DEPICTS FLAT PATTERN OF FORMED PARTS DEFINED BY PRO/E MODELS SEI42B-245.PRT AND SEI42B-247.PRT.
  5. PROFILE TOLERANCE OF FLAT PATTERN IS +/- .010 IN.
  6. THICKNESS IS 0.040 +/- .006 IN. PER ASTM B248.
  7. REMOVE ALL BURRS AND SHARP EDGES.
  8. IDENTIFY PARTS WITH LABEL SHOWN BY ETCHING OR PERMANENT MARKER.
  9. PARTS INDICATED TO BE NEMA GRADE GIICR MATERIAL.



ISOMETRIC VIEW  
SCALE 1.00

- PART LABEL:
- 1 - A - A - XX - L
  - 2 - B - B - -R
  - 3 - C
  - 4
- LEFT COIL SIDE  
RIGHT COIL SIDE  
HOLER NO.
- WEB CLADDING 1  
BASE CLADDING 2  
LOWER CHILL PLATE 3  
UPPER CHILL PLATE 4



TYPICAL SECTION  
SCALE 1.00

**RFD-18-002 addresses resolution of B/C coil interferences, including guidelines for grinding. Additionally, NCR-3735 resolved B1/C1 interferences. PLEASE CHECK BOTH THIS RFD AND NCR-3735 FOR GUIDELINES IN RESOLVING ANY B/C COIL INTERFERENCES**

REV	DESCRIPTION	BY	DATE	CHK	DEPT	DATE	PE	REQ	DATE	ORNL	DOE	DATE
1	REVISE PARTS AND DRAWING PER ECN 5140	GLL	7-06	MJC			DEW					

QTY	PART NO.	PART OR IDENTIFYING NO	NOMENCLATURE OR DESCRIPTION	MATERIAL / SPECIFICATION	FINL NO
378	SEI42B-246		CHILL PLATES	COPPER, ANNEALED UNS C10100, C10200, C11000 ETP OR NEMA GRADE GIICR (NOTED)	4
386	SEI42B-244		CLADDING	COPPER, ANNEALED UNS C10100, C10200, C11000 ETP OR NEMA GRADE GIICR (NOTED)	3
1	SEI41-115-SIM		TYPE-B MODULAR COIL WINDING FORM		2
AR X		-1	TYPE-B SIDE-A CLADDING AND CHILL PLATES		1

**RELEASED FOR FABRICATION / INSTALLATION**  
PPPL Drafting:

NO REPRESENTATION OR WARRANTY, EXPRESSED OR IMPLIED, IS MADE AS TO THE ACCURACY, COMPLETENESS OR USEFULNESS OF THE INFORMATION OR STATEMENTS CONTAINED IN THESE DRAWINGS, OR THAT THE USE OR DISCLOSURE OF ANY INFORMATION, APPARATUS, METHOD OR PROCESS DISCLOSED IN THESE DRAWINGS MAY NOT INFRINGE PRIVATE RIGHTS OF OTHERS. NO LIABILITY IS ASSUMED WITH RESPECT TO THE USE OF, OR FOR DAMAGES RESULTING FROM THE USE OF, ANY INFORMATION, APPARATUS, METHOD OR PROCESS DISCLOSED IN THESE DRAWINGS. DRAWINGS MADE AVAILABLE FOR PURPOSES, AND ARE TO BE RETURNED UPON REQUEST OF THE FORWARDING CONTRACTOR.

**P** THIS DRAWING PRODUCED ON PRO-ENGINEER

SCALE NOTED

TOLERANCES UNLESS OTHERWISE SPECIFIED

FRACTIONS :  
XX DECIMALS ±.01  
XXX DECIMALS ±.005  
ANGLES ±0°15'  
BREAK SHARP EDGES 06 MAX  
FINISH .125 UNLESS OTHERWISE SPECIFIED

DES: D WILLIAMSON 6-06  
DRW: G LOVETT 6-06  
CHK: M COLE 6-06  
SECT: :  
DEPT: :  
PE: D WILLIAMSON 6-06  
CR: :  
PJ: :  
REQ: :  
PPPL DRFT J SIEGEL 6-06

UT-BATTELLE  
NATIONAL COMPACT STELLARATOR EXPERIMENT  
MODULAR COIL TYPE - B  
SIDE - B CLADDING AND CHILL PLATES  
FLAT PATTERN LAYOUT

VERSION NO. 4  
PLANT X-10  
BLDG 5700  
FL 3  
SHT 11  
OF 11  
TYPE U  
CLASS S  
REV 1

RELEASE LEVEL Fabrication  
SEI42B-242

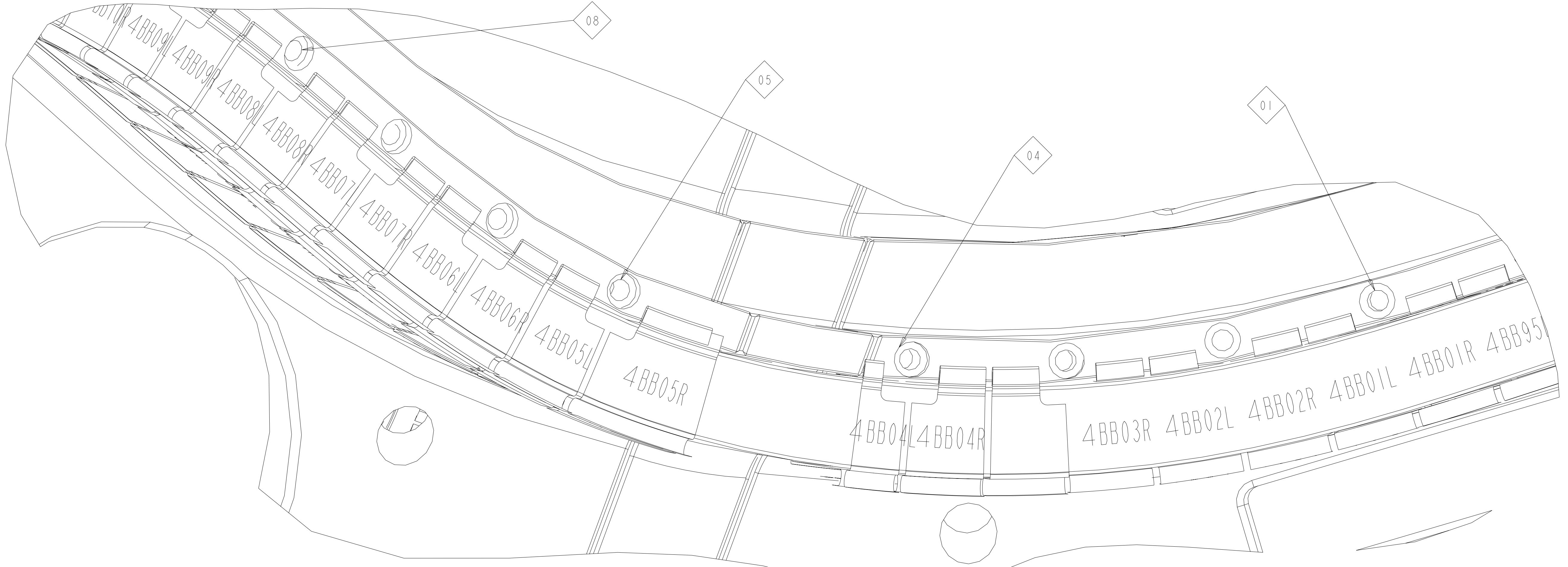
Oak Ridge National Laboratory managed for the DEPARTMENT OF ENERGY under U.S. GOVERNMENT CONTRACT DE-AC05-00OR22725 UT-BATTELLE, LLC, Oak Ridge, Tennessee  
PROJECT NAME: NATIONAL COMPACT STELLARATOR EXPERIMENT



NO CHILL PLATE

⚠ PARTS TO BE NEMA GRADE GI1CR

⚠ SEE SHEET 11



PARTIAL ISOMETRIC VIEW  
SCALE 1.00

RELEASED FOR FABRICATION / INSTALLATION  
PPPL Drafting:

Oak Ridge National Laboratory managed for the DEPARTMENT OF ENERGY under U.S. GOVERNMENT CONTRACT DE-AC05-00OR22725 UT-BATTELLE, LLC., Oak Ridge, Tennessee PROJECT NAME:									
<b>NATIONAL COMPACT STELLARATOR EXPERIMENT</b> MODULAR COIL TYPE - B SIDE - B CLADDING AND CHILL PLATES FLAT PATTERN LAYOUT									
VERSION NO.	PLANT	BLDG	FL	SHT	OF	TYPE	CLASS		
4	X-10	5700	3	2	11	U	S		
RELEASE LEVEL		SE 142B-242							
Fabrication									

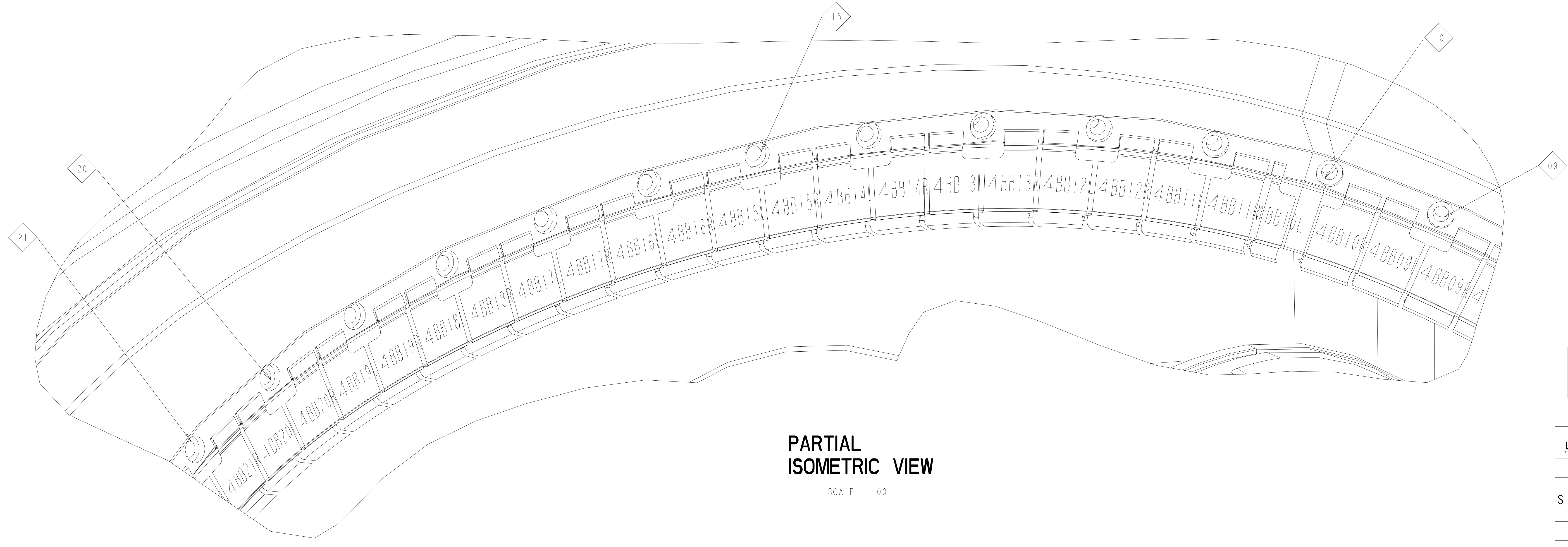
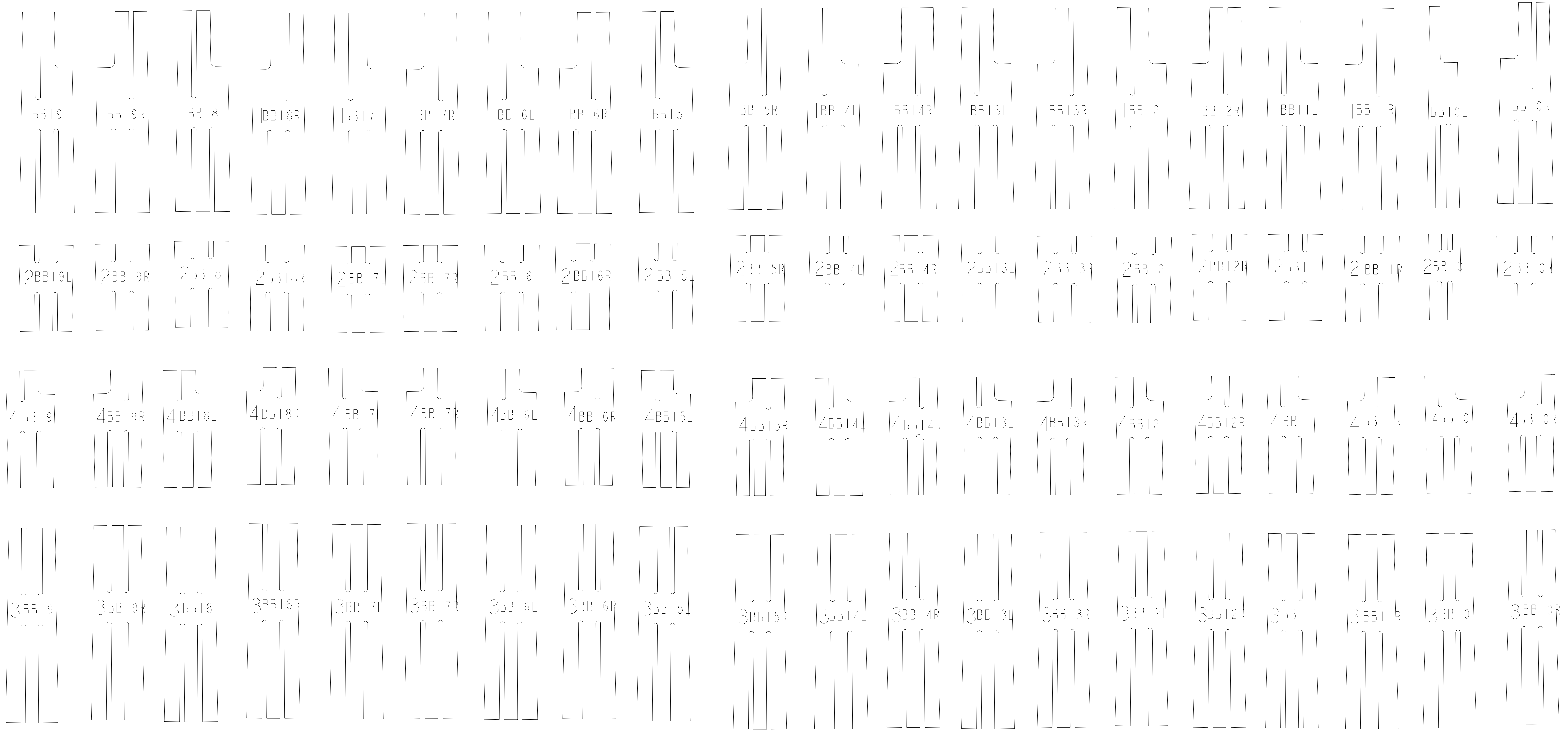
242-02135

A

8 7 6 5 4 3 2 1

NEXT ASS'Y: 1 FINAL ASS'Y:

H G F E D C B A



**PARTIAL ISOMETRIC VIEW**  
SCALE 1.00

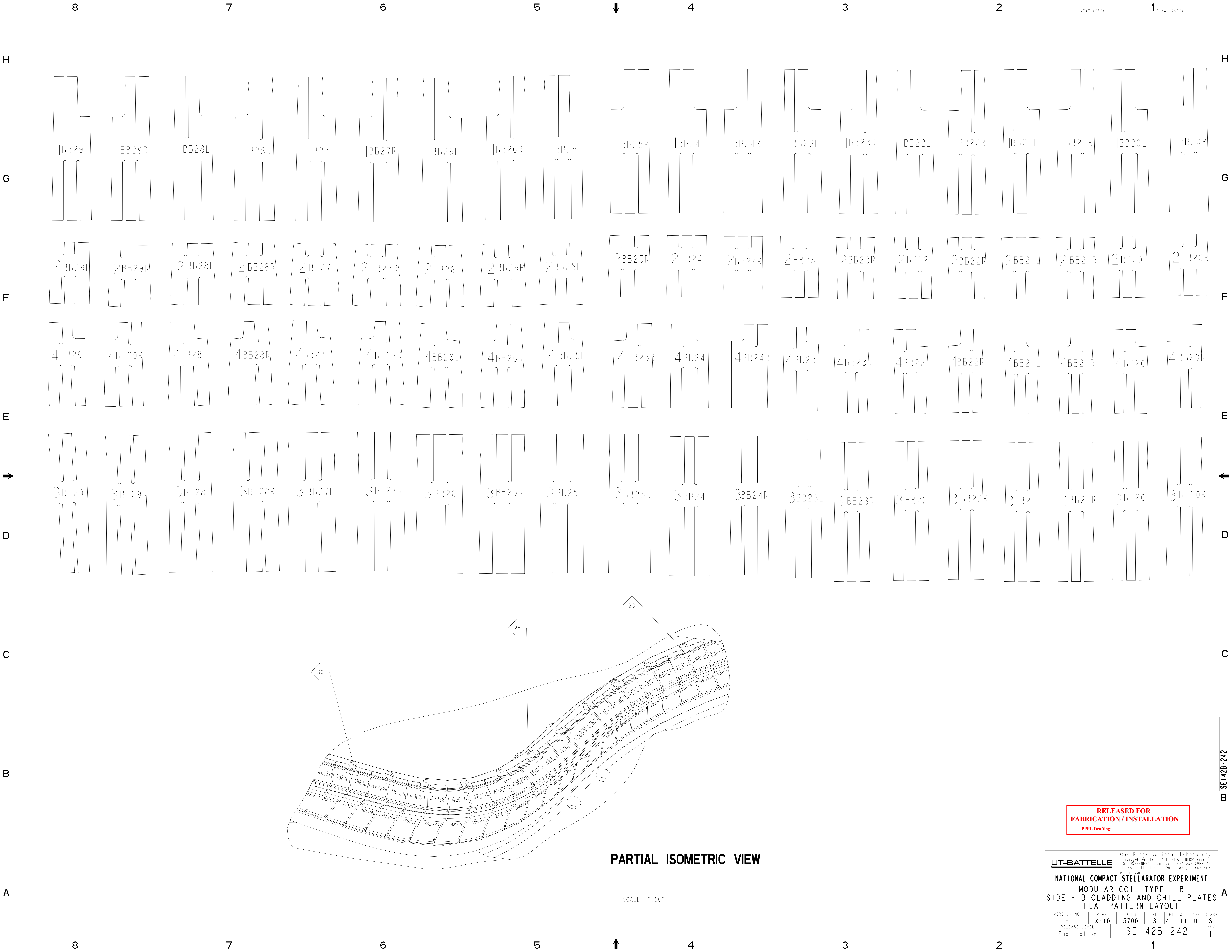
**RELEASED FOR FABRICATION / INSTALLATION**  
PPPL Drafting

UT-BATTELLE		Oak Ridge National Laboratory managed for the DEPARTMENT OF ENERGY under U.S. GOVERNMENT CONTRACT DE-AC05-00OR22725 UT-BATTELLE, LLC. Oak Ridge, Tennessee	
PROJECT NAME			
<b>NATIONAL COMPACT STELLARATOR EXPERIMENT</b>			
<b>MODULAR COIL TYPE - B</b>			
<b>SIDE - B CLADDING AND CHILL PLATES</b>			
<b>FLAT PATTERN LAYOUT</b>			
VERSION NO. 4	PLANT X-10	BLDG 5700	FL SHT OF TYPE CLASS 3 3 11 U S
RELEASE LEVEL Fabrication		SE 142B-242	

8 7 6 5 4 3 2 1

242-02135

A



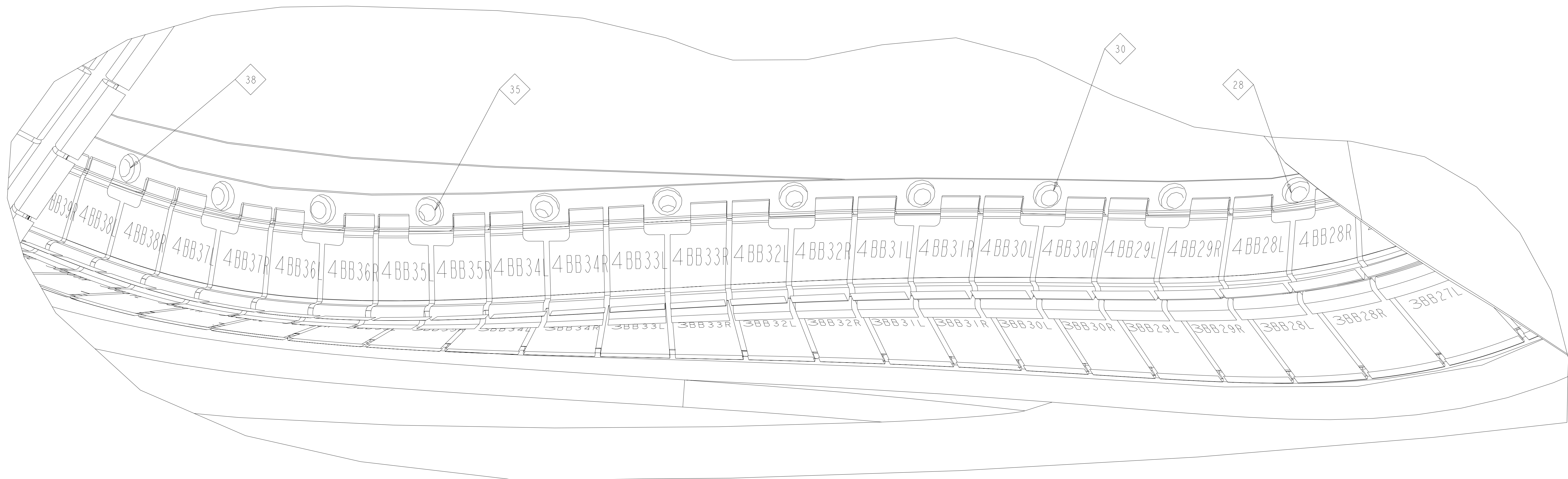
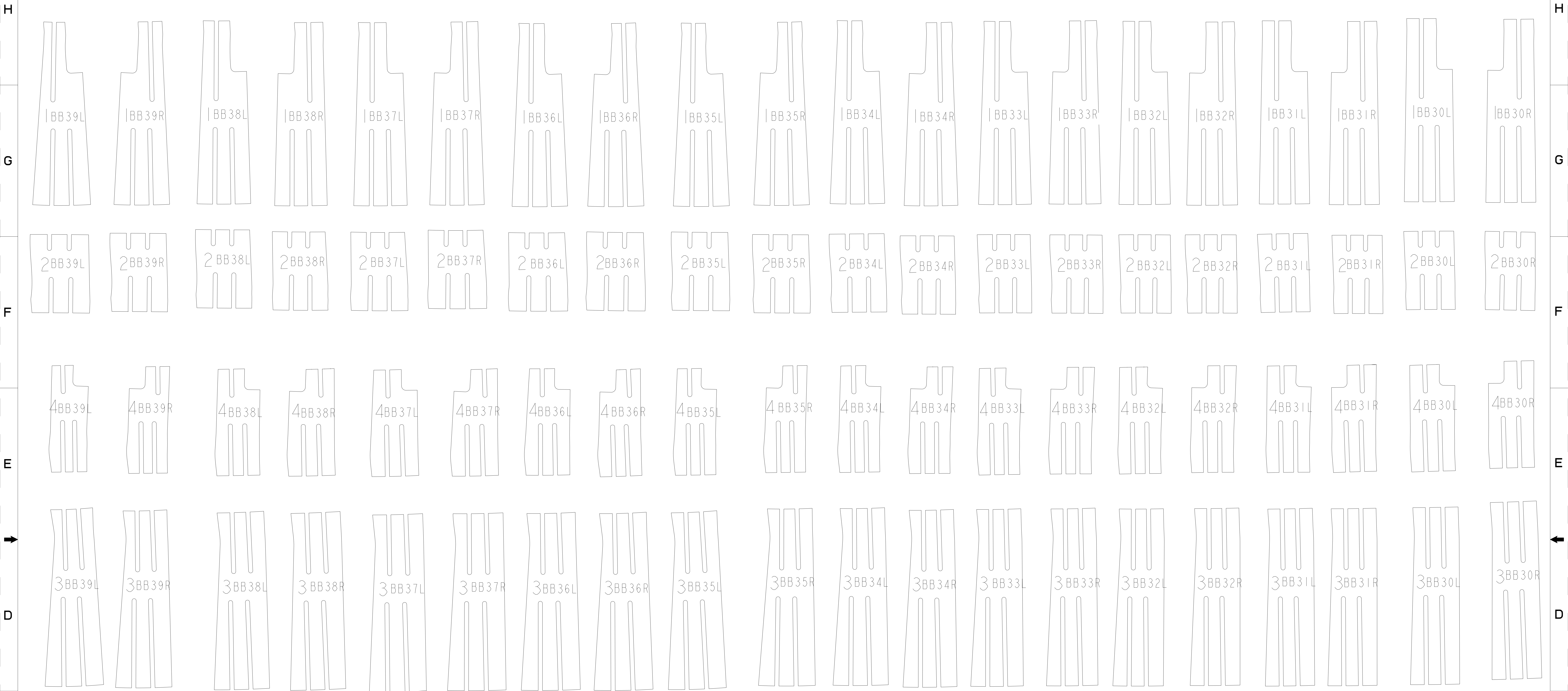
**RELEASED FOR  
FABRICATION / INSTALLATION**  
PPPL Drafting

**PARTIAL ISOMETRIC VIEW**

SCALE 0.500

<small>Oak Ridge National Laboratory managed for the DEPARTMENT OF ENERGY under U.S. GOVERNMENT contract DE-AC05-00OR22725 UT-BATTELLE, LLC, Oak Ridge, Tennessee</small>										
<b>UT-BATTELLE</b>										
<b>NATIONAL COMPACT STELLARATOR EXPERIMENT</b>										
<b>MODULAR COIL TYPE - B</b>										
<b>SIDE - B CLADDING AND CHILL PLATES</b>										
<b>FLAT PATTERN LAYOUT</b>										
VERSION NO.	PLANT	BLDG	FL	SHT	OF	TYPE	CLASS			
4	X-10	5700	3	4	11	U	S			
RELEASE LEVEL		SE 142B-242								REV
Fabrication										1

22-02135



**RELEASED FOR FABRICATION / INSTALLATION**  
 PPPL Drafting:

**PARTIAL ISOMETRIC VIEW**  
 SCALE 1:1.00

Oak Ridge National Laboratory managed for the DEPARTMENT OF ENERGY under U.S. GOVERNMENT CONTRACT DE-AC05-00OR22725 UT-BATTELLE, LLC., Oak Ridge, Tennessee PROJECT NAME:									
<b>NATIONAL COMPACT STELLARATOR EXPERIMENT</b> MODULAR COIL TYPE - B SIDE - B CLADDING AND CHILL PLATES FLAT PATTERN LAYOUT									
VERSION NO.	PLANT	BLDG	FL	SHT	OF	TYPE	CLASS		
4	X-10	5700	3	5	11	U	S		
RELEASE LEVEL		SE 142B-242							
Fabrication									

242-02135

A

8

7

6

5

4

3

2

1

NEXT ASS'Y: 1 FINAL ASS'Y:

H

H

G

G

F

F

E

E

D

D

C

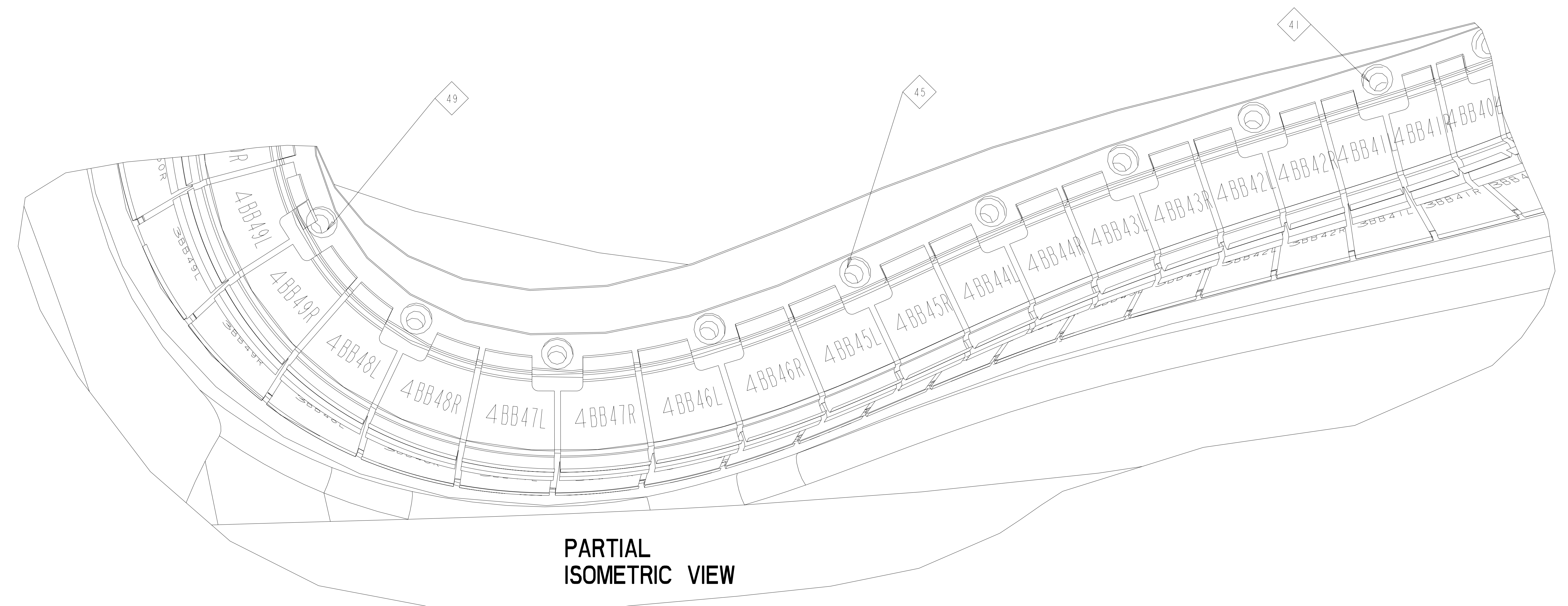
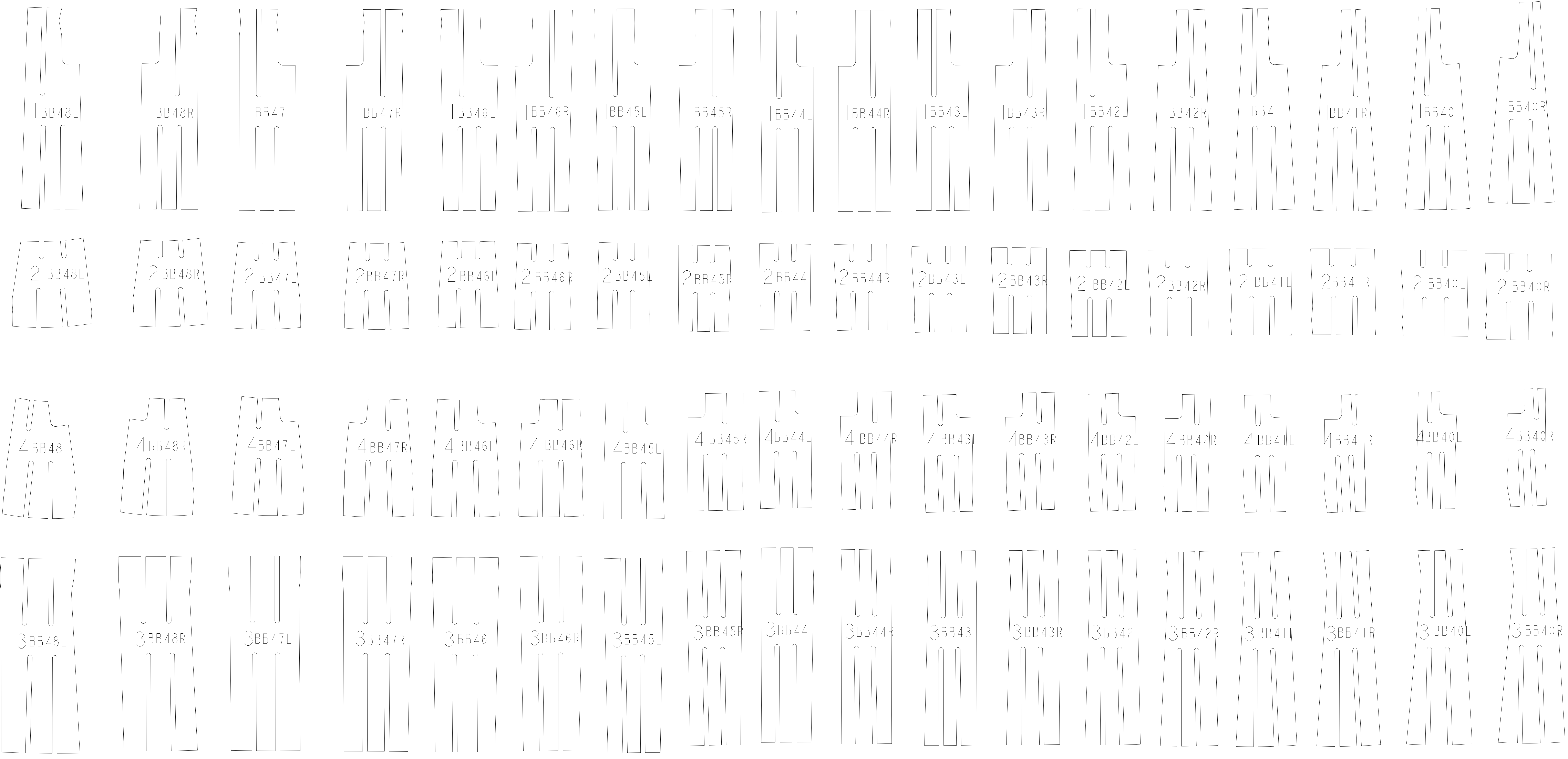
C

B

B

A

A



PARTIAL ISOMETRIC VIEW

SCALE 1.00

RELEASED FOR FABRICATION / INSTALLATION  
PPPL Drafting

UT-BATTELLE										Oak Ridge National Laboratory managed for the DEPARTMENT OF ENERGY under U.S. GOVERNMENT CONTRACT DE-AC05-00OR22725 UT-BATTELLE, LLC. Oak Ridge, Tennessee									
NATIONAL COMPACT STELLARATOR EXPERIMENT										MODULAR COIL TYPE - B									
SIDE - B CLADDING AND CHILL PLATES										FLAT PATTERN LAYOUT									
VERSION NO.	PLANT	BLDG	FL	SHT	OF	TYPE	CLASS												
4	X-10	5700	3	6	11	U	S												
RELEASE LEVEL		SE 142B-242								REV									
Fabrication																			

8

7

6

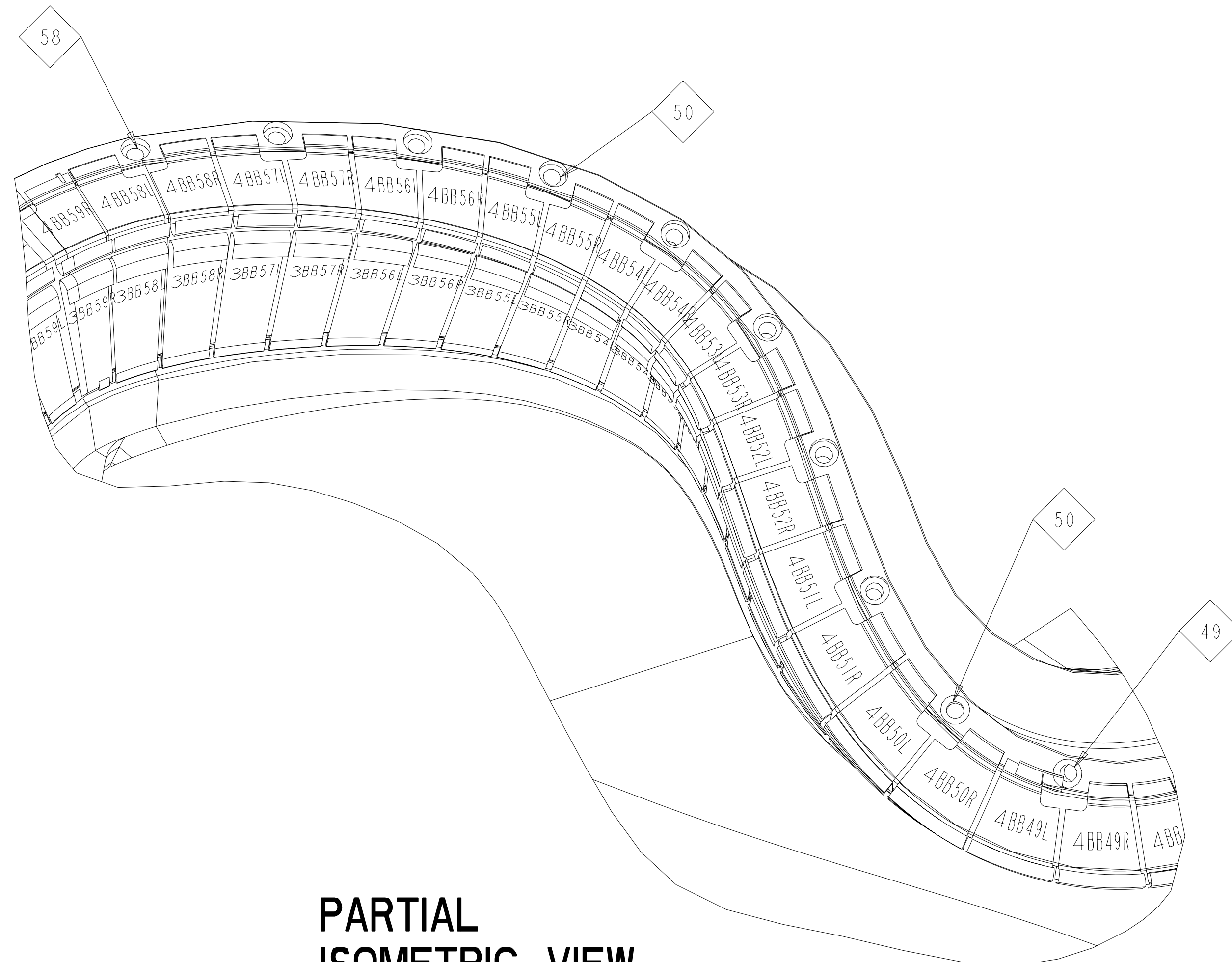
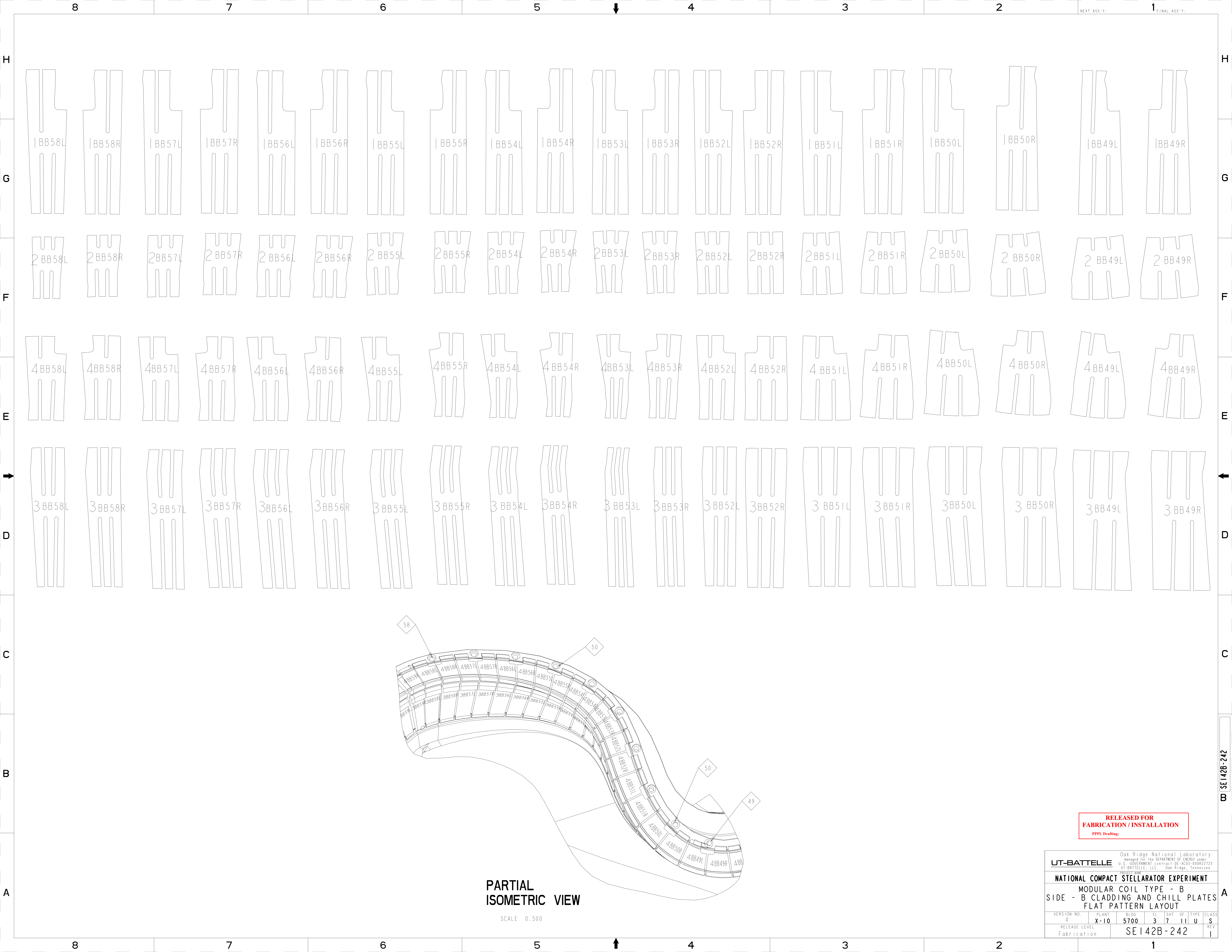
5

4

3

2

1



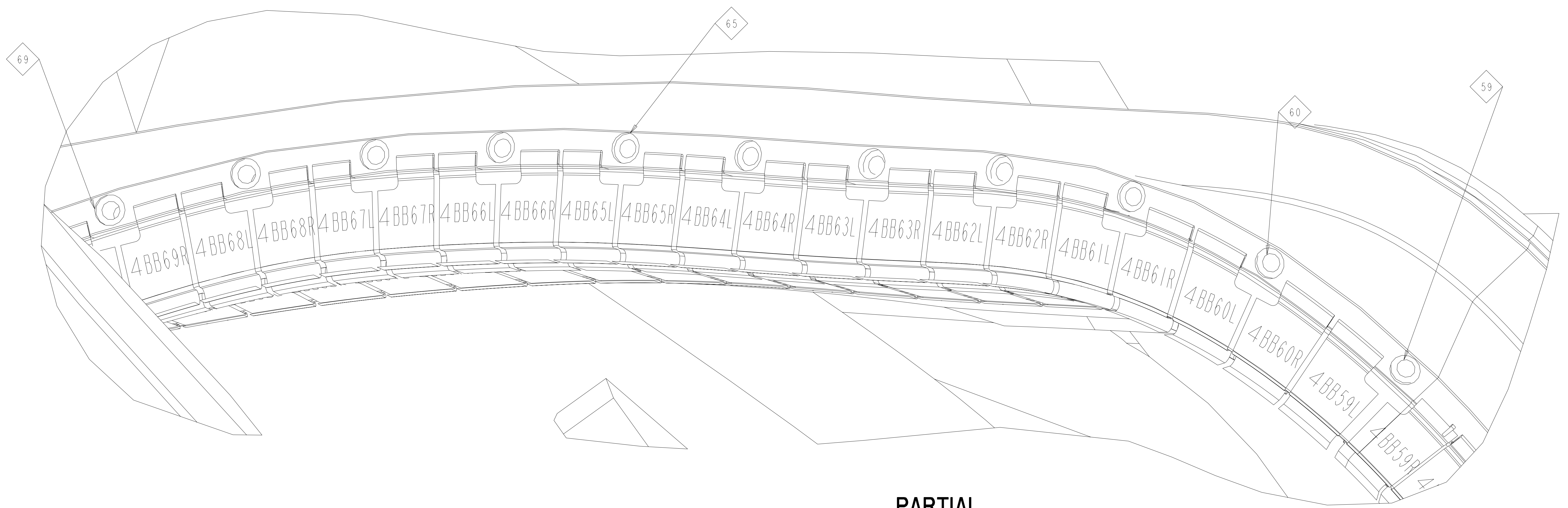
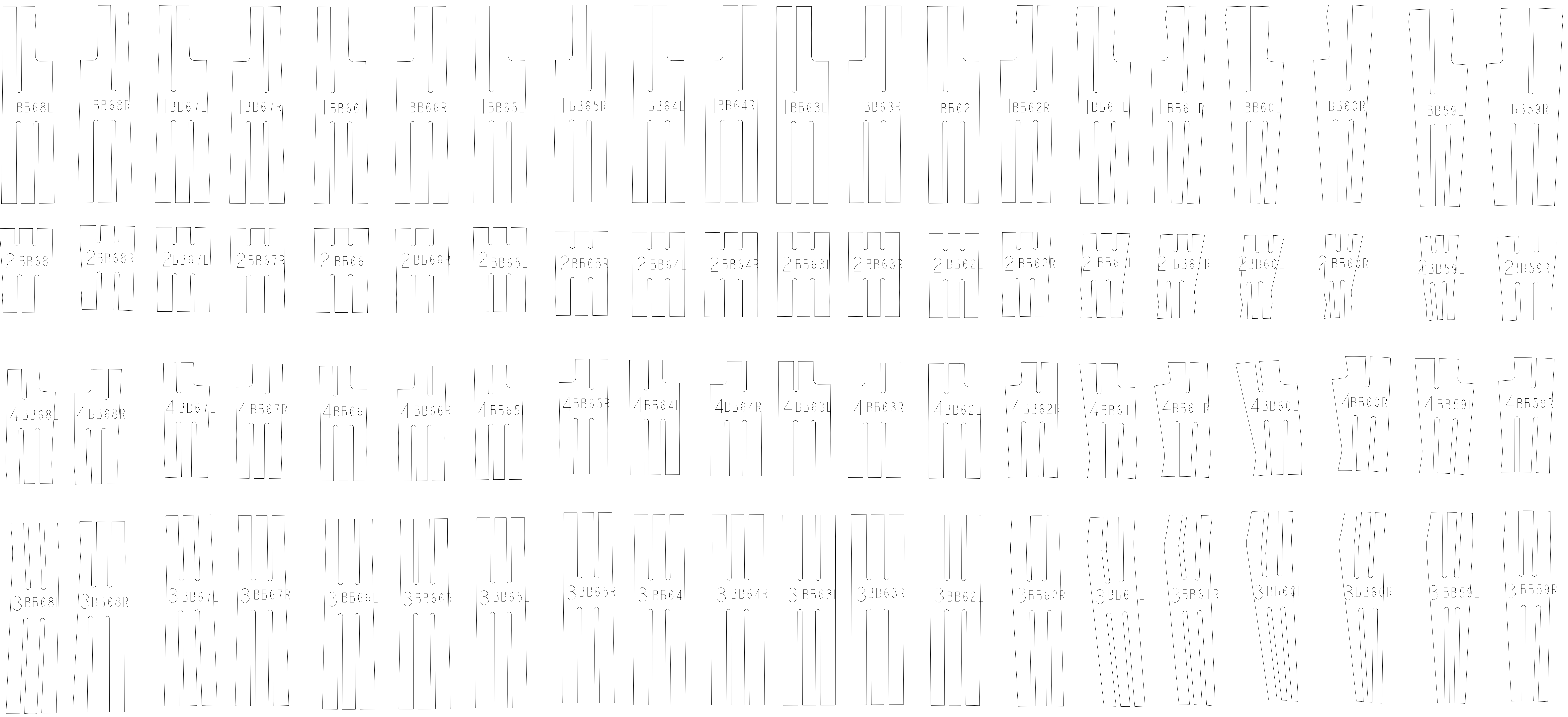
**PARTIAL ISOMETRIC VIEW**  
SCALE 0.500

**RELEASED FOR FABRICATION / INSTALLATION**  
PPPL Drafting

Oak Ridge National Laboratory managed for the DEPARTMENT OF ENERGY under U.S. GOVERNMENT CONTRACT DE-AC05-00OR22725 UT-BATTELLE, LLC., Oak Ridge, Tennessee PROJECT NAME									
<b>NATIONAL COMPACT STELLARATOR EXPERIMENT</b> MODULAR COIL TYPE - B SIDE - B CLADDING AND CHILL PLATES FLAT PATTERN LAYOUT									
VERSION NO.	PLANT	BLDG	FL	SHT	OF	TYPE	CLASS		
4	X-10	5700	3	7	11	U	S		
RELEASE LEVEL		SE 142B-242							
Fabrication									

242-02135

A



PARTIAL ISOMETRIC VIEW

SCALE 1.00

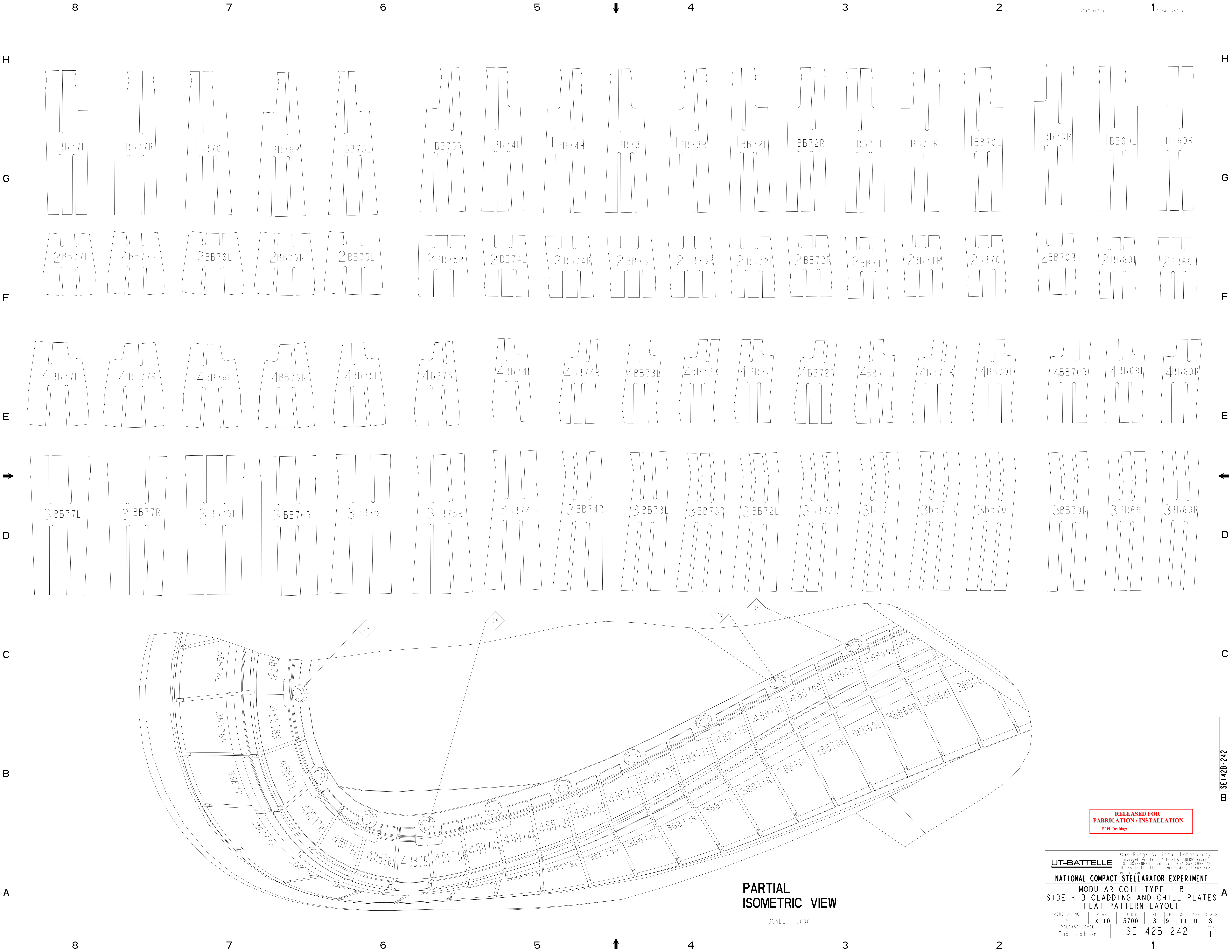
RELEASED FOR FABRICATION/INSTALLATION  
PPPL Drafting

UT-BATTELLE										Oak Ridge National Laboratory managed for the DEPARTMENT OF ENERGY under U.S. GOVERNMENT CONTRACT DE-AC05-00OR22725 UT-BATTELLE, LLC - Oak Ridge, Tennessee									
PROJECT NAME																			
NATIONAL COMPACT STELLARATOR EXPERIMENT																			
MODULAR COIL TYPE - B																			
SIDE - B CLADDING AND CHILL PLATES																			
FLAT PATTERN LAYOUT																			
VERSION NO.	PLANT	BLDG	FL	SHT	OF	TYPE	CLASS												
4	X-10	5700	3	8	11	U	S												
RELEASE LEVEL		SE 142B-242																	
Fabrication																			

242-02135

A





RELEASED FOR  
FABRICATION / INSTALLATION  
PPPL Drafting

Oak Ridge National Laboratory managed for the DEPARTMENT OF ENERGY under U.S. GOVERNMENT CONTRACT DE-AC05-00OR22725 UT-BATTELLE, LLC., Oak Ridge, Tennessee PROJECT NAME:									
<b>NATIONAL COMPACT STELLARATOR EXPERIMENT</b> MODULAR COIL TYPE - B SIDE - B CLADDING AND CHILL PLATES FLAT PATTERN LAYOUT									
VERSION NO.	PLANT	BLDG	FL	SHT	OF	TYPE	CLASS		
4	X-10	5700	3	9	11	U	S		
RELEASE LEVEL		SE 142B-242							
Fabrication									

PARTIAL  
ISOMETRIC VIEW

SCALE 1.000

242-02135-00

8

7

6

5

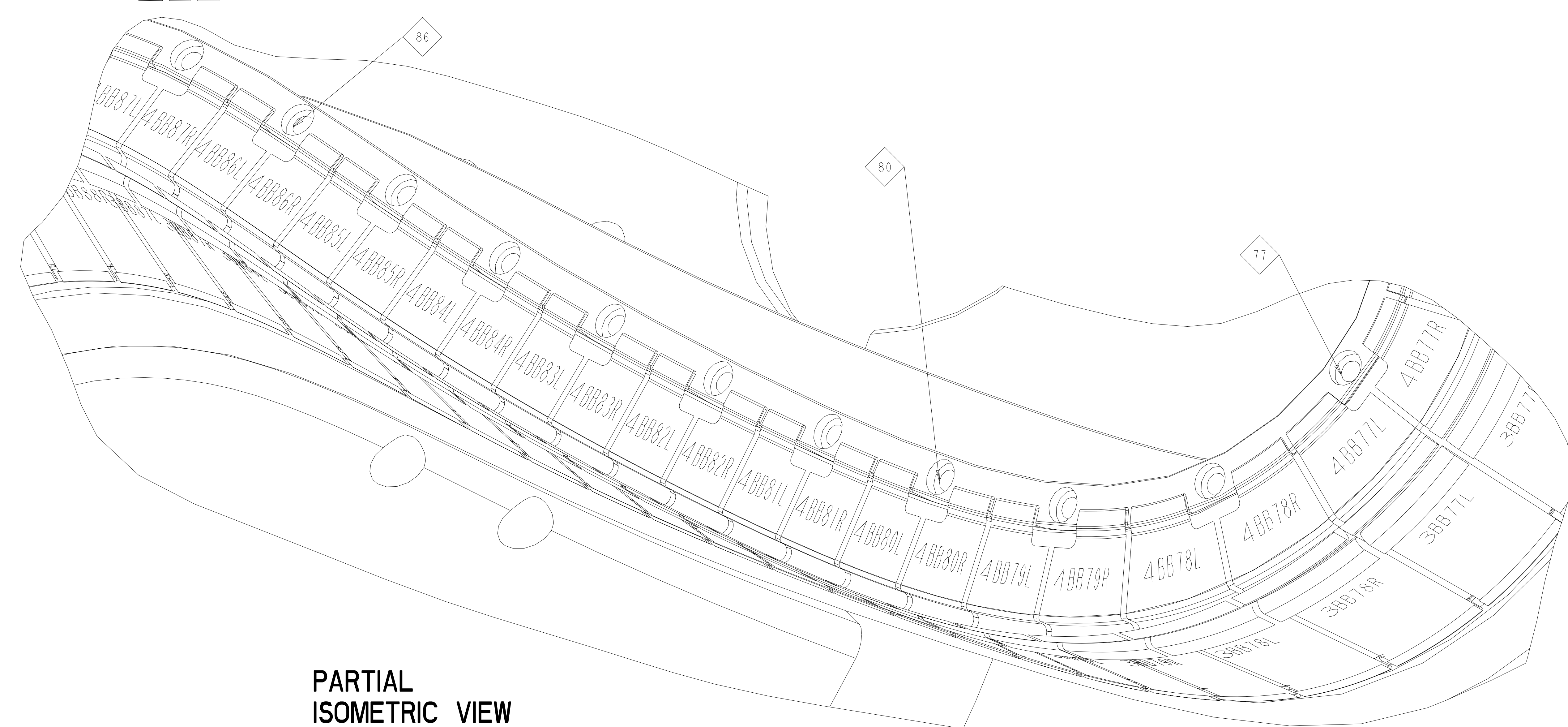
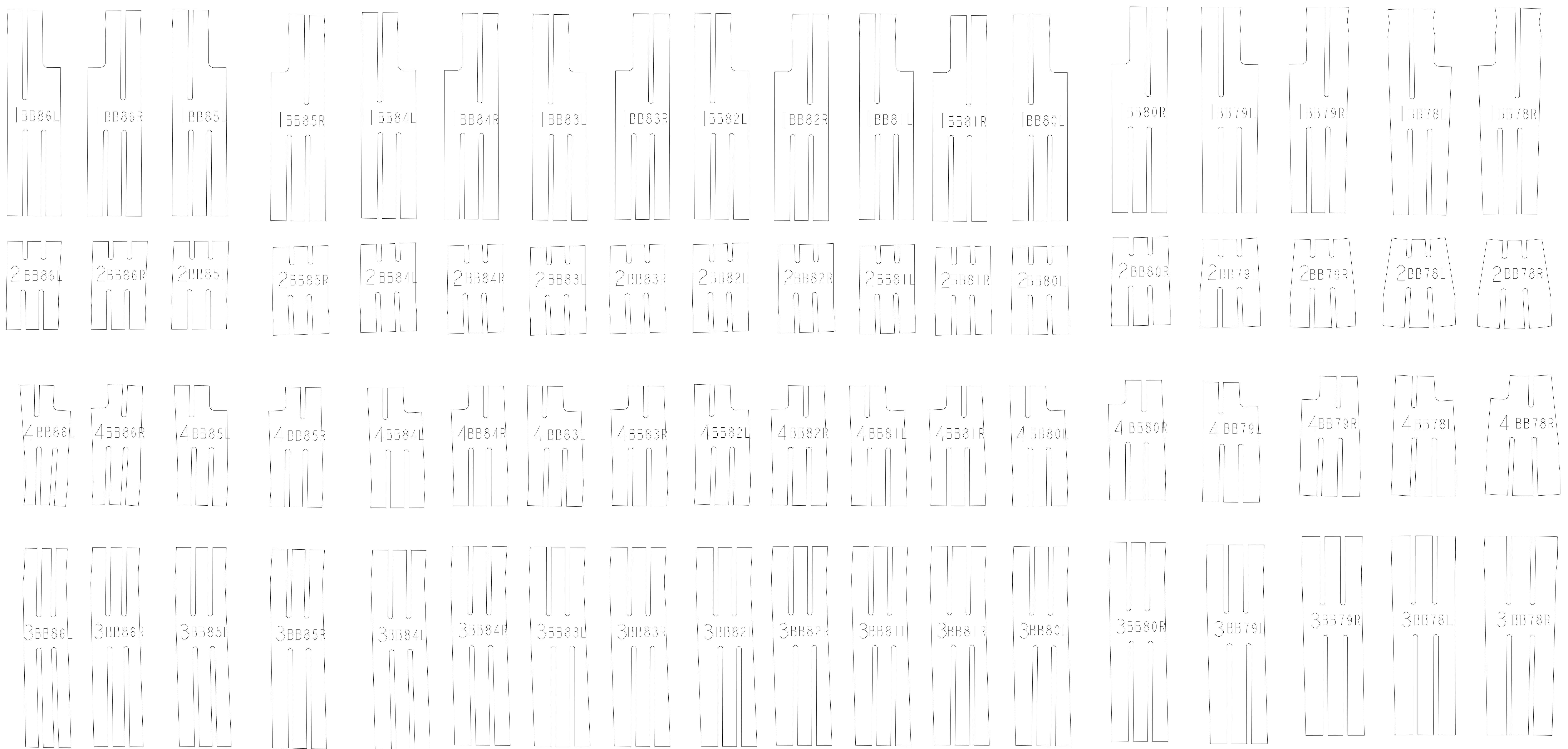
4

3

2

1

NEXT ASS'Y: 1 FINAL ASS'Y:



**PARTIAL ISOMETRIC VIEW**  
SCALE 1.00

**RELEASED FOR FABRICATION / INSTALLATION**  
PPPL Drafting

Oak Ridge National Laboratory managed for the DEPARTMENT OF ENERGY under U.S. GOVERNMENT CONTRACT DE-AC05-00OR22725 UT-BATTELLE, LLC., Oak Ridge, Tennessee PROJECT NAME:									
<b>NATIONAL COMPACT STELLARATOR EXPERIMENT</b> <b>MODULAR COIL TYPE - B</b> <b>SIDE - B CLADDING AND CHILL PLATES</b> <b>FLAT PATTERN LAYOUT</b>									
VERSION NO.	PLANT	BLDG	FL	SHT	OF	TYPE	CLASS		
4	X-10	5700	3	10	11	U	S		
RELEASE LEVEL		SE 142B-242							
Fabrication									

8

7

6

5

4

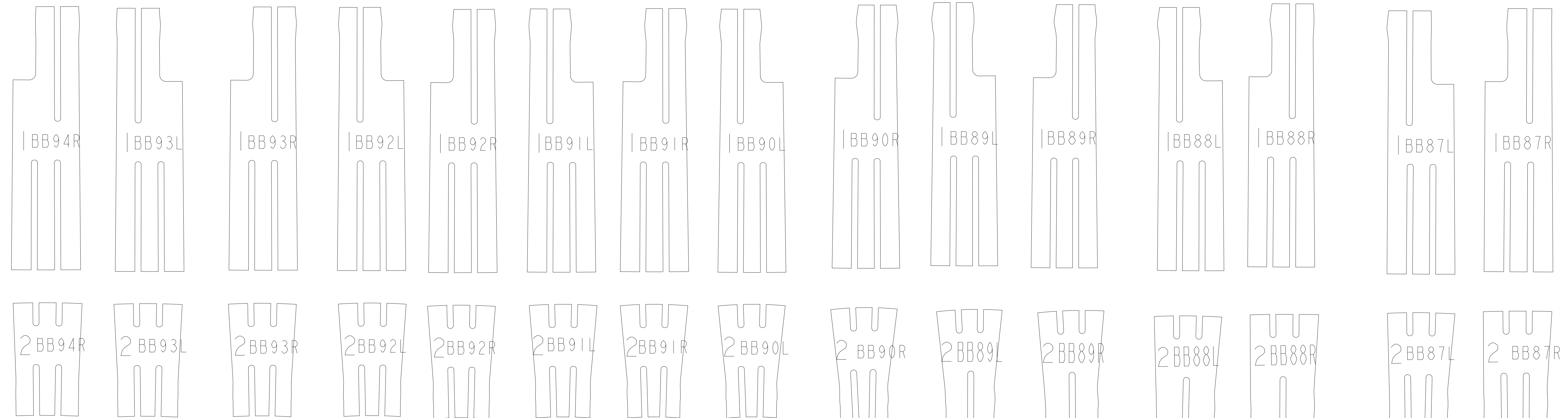
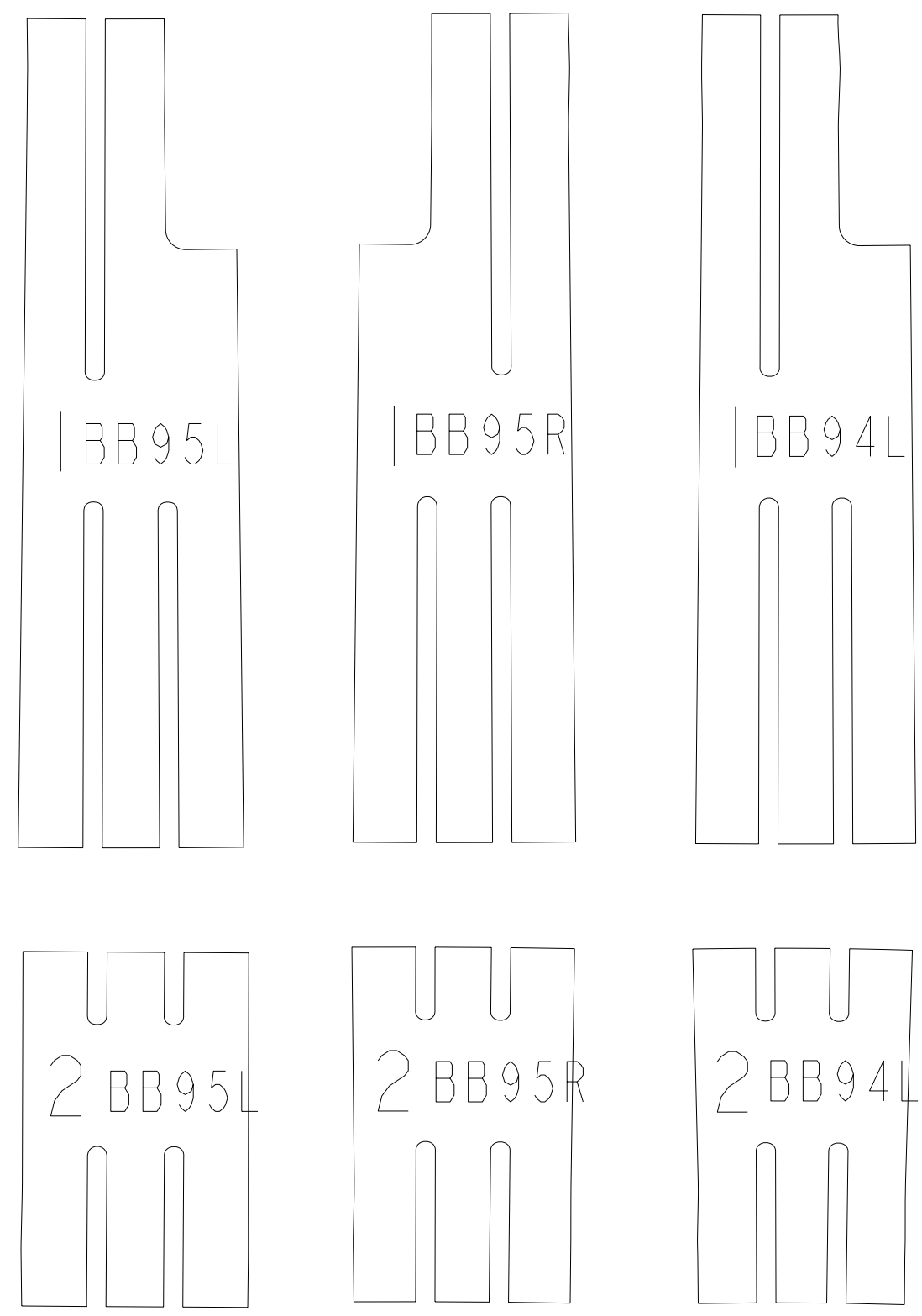
3

2

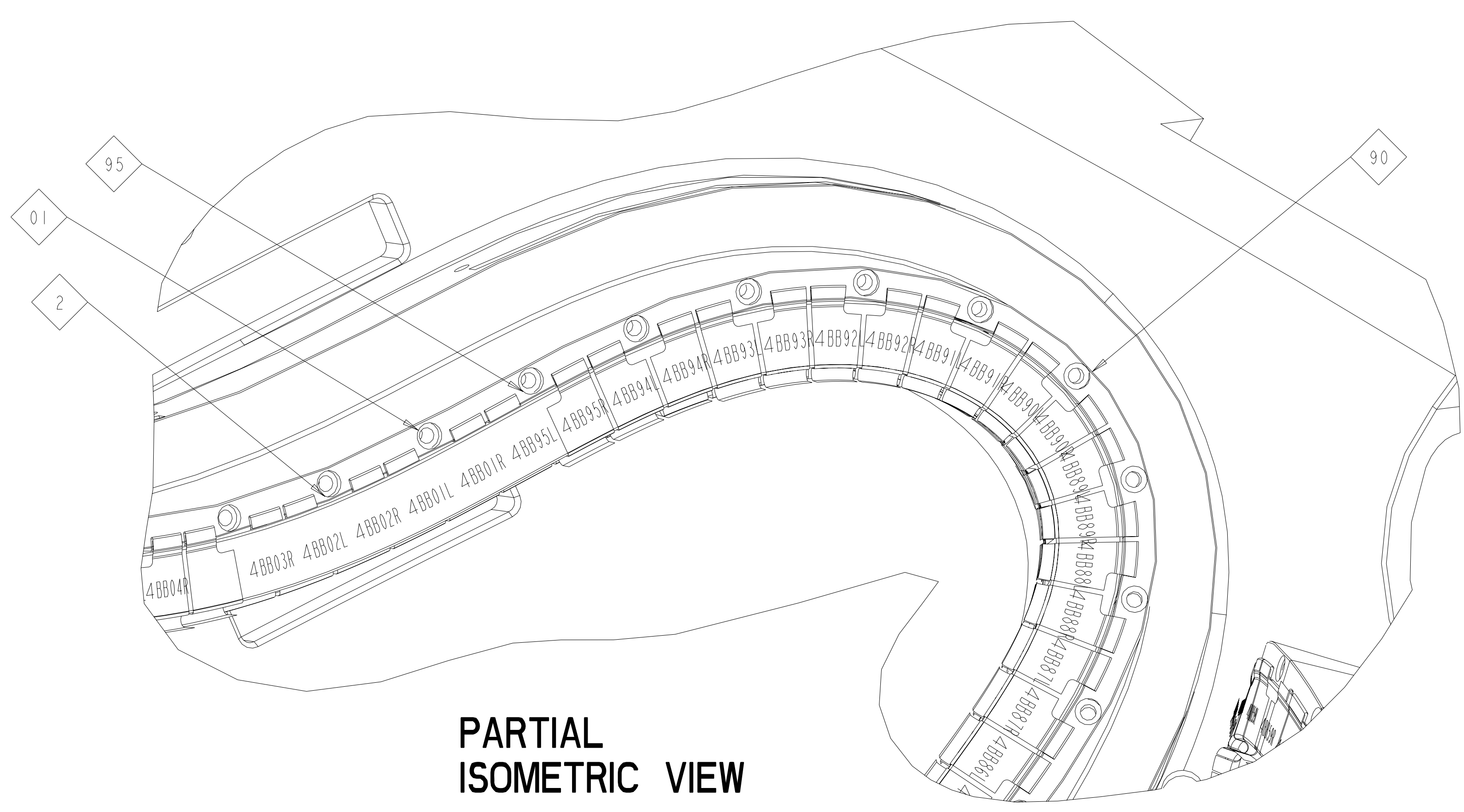
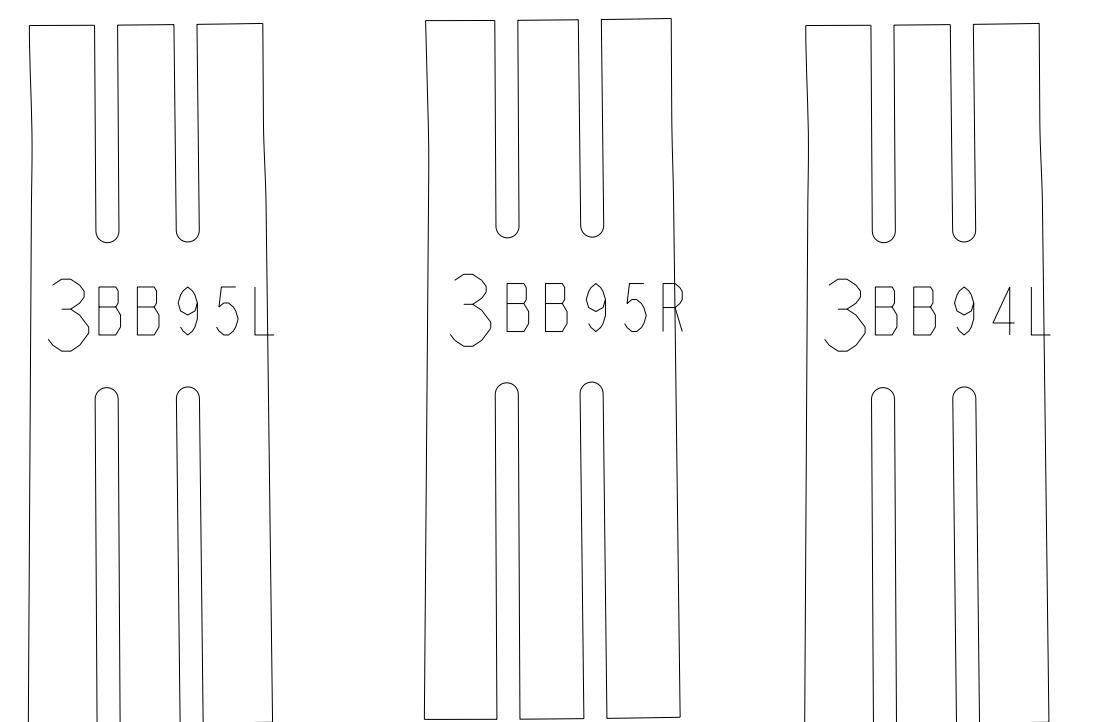
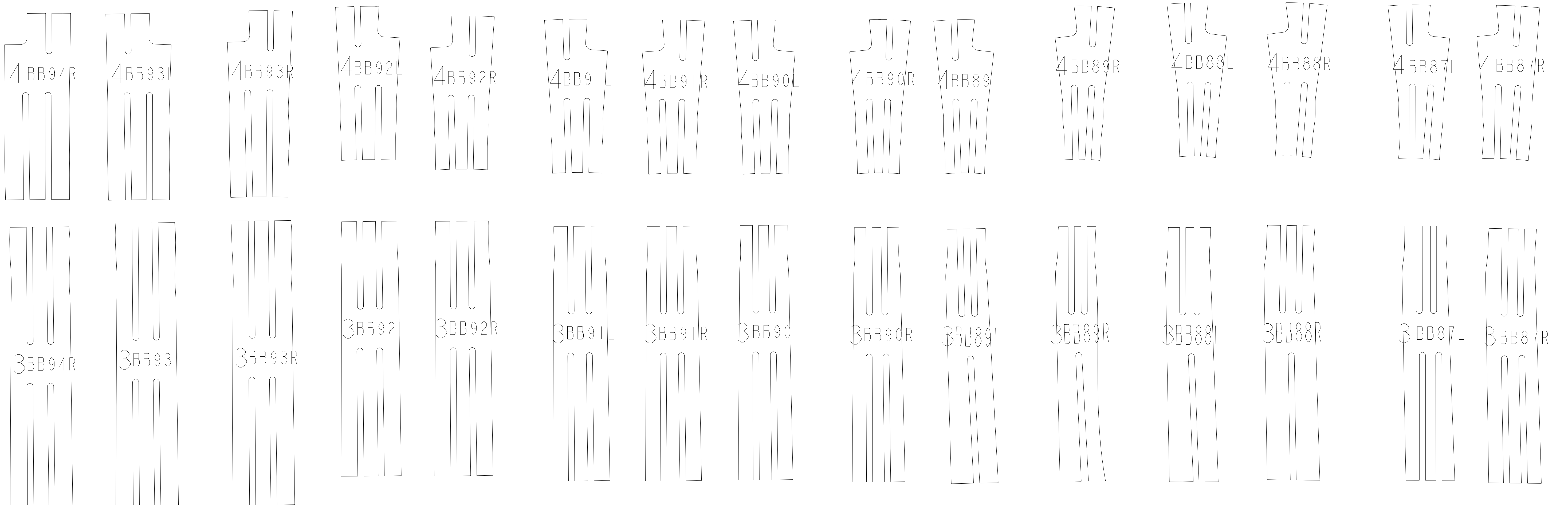
1

212-02135

A



THESE PARTS TO BE NEMA GRADE GIICR MATERIAL.



RELEASED FOR FABRICATION / INSTALLATION  
PPPL Drafting

Oak Ridge National Laboratory managed for the DEPARTMENT OF ENERGY under U.S. GOVERNMENT CONTRACT DE-AC05-00OR22725 UT-BATTELLE, LLC. Oak Ridge, Tennessee PROJECT NAME											
<b>UT-BATTELLE</b> <b>NATIONAL COMPACT STELLARATOR EXPERIMENT</b> <b>MODULAR COIL TYPE - B</b> <b>SIDE - B CLADDING AND CHILL PLATES</b> <b>FLAT PATTERN LAYOUT</b>											
VERSION NO.	PLANT	BLDG	FL	SHT	OF	TYPE	CLASS				
4	X-10	5700	3	11	11	U	S				
RELEASE LEVEL			SE 142B-242								
Fabrication											

212-02135

A