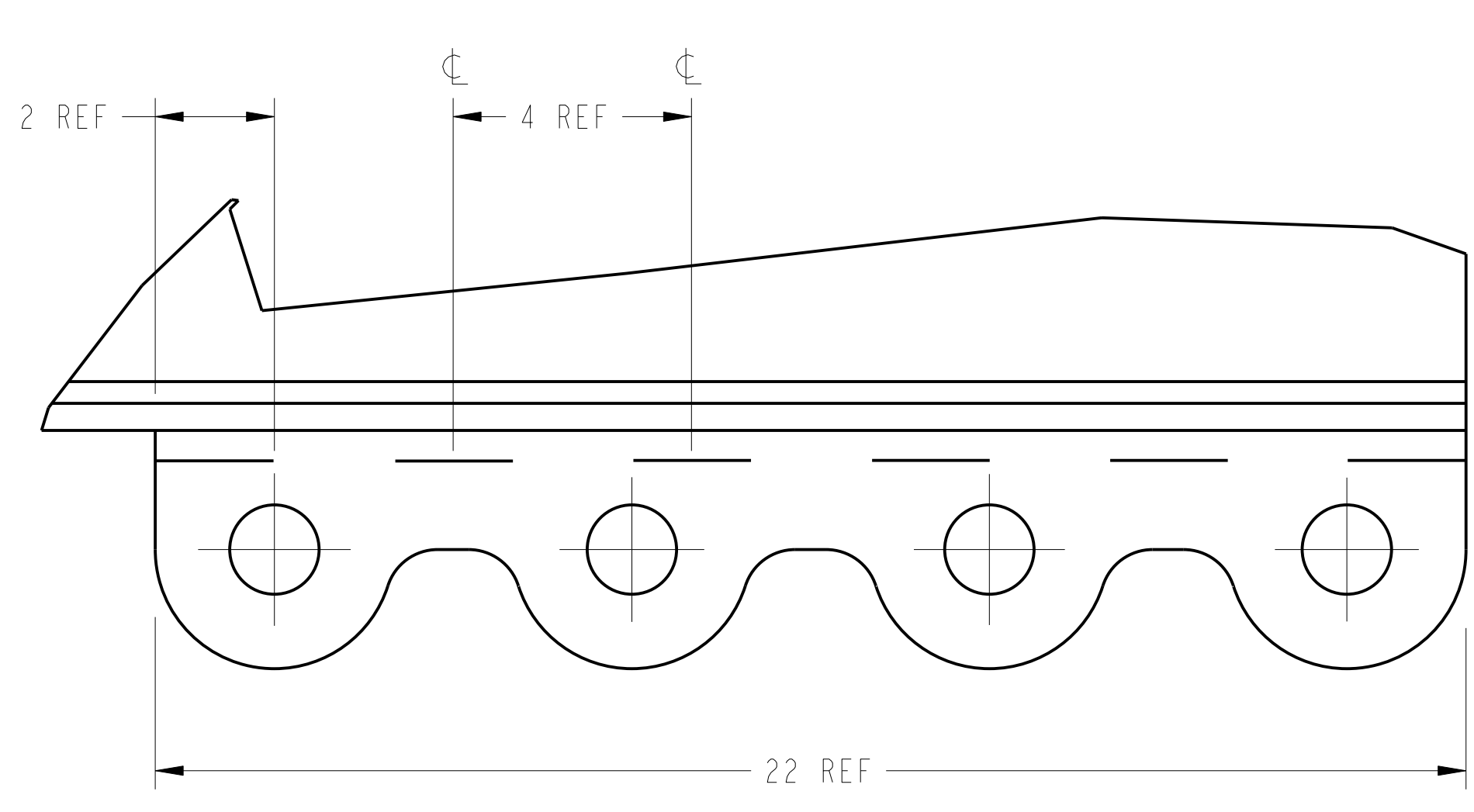
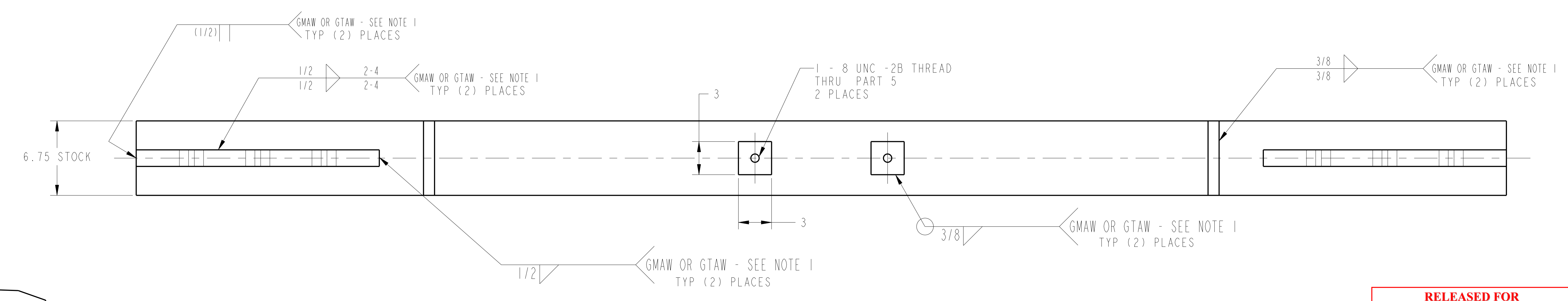
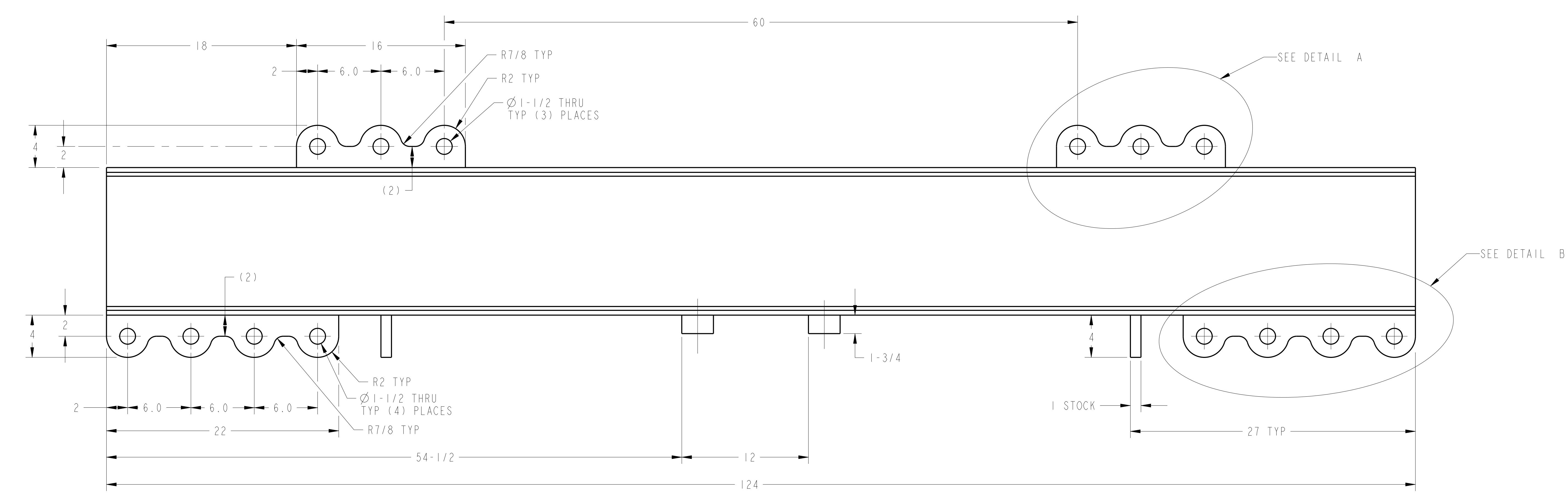
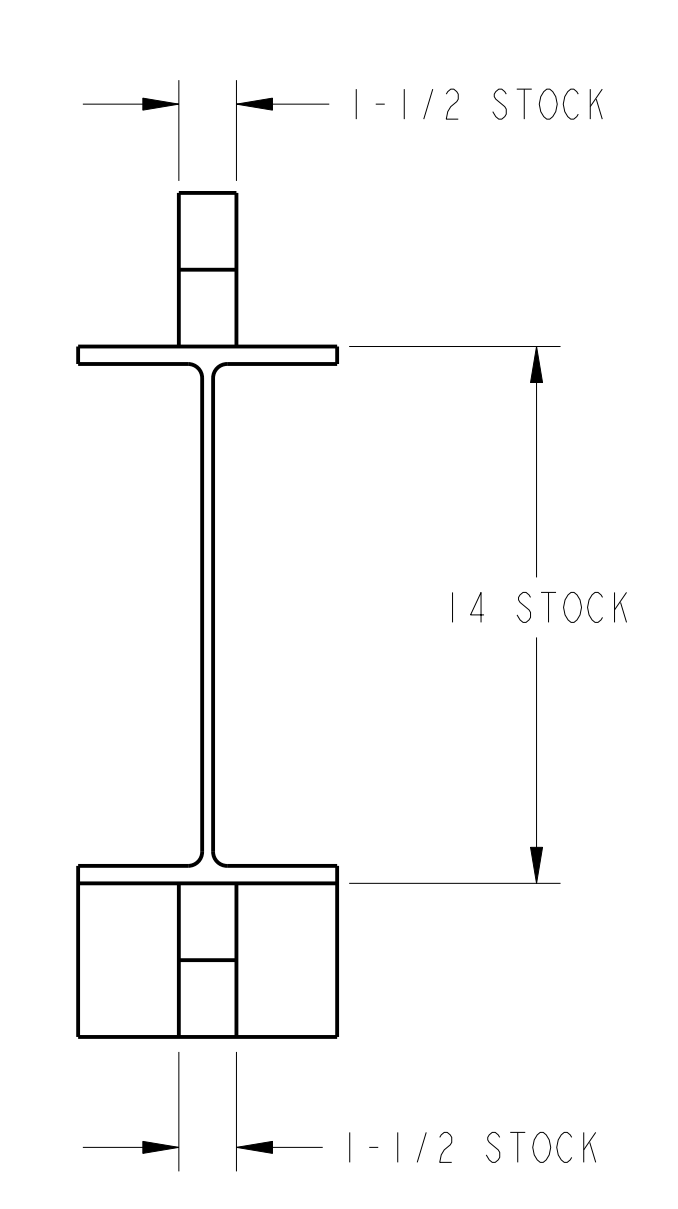
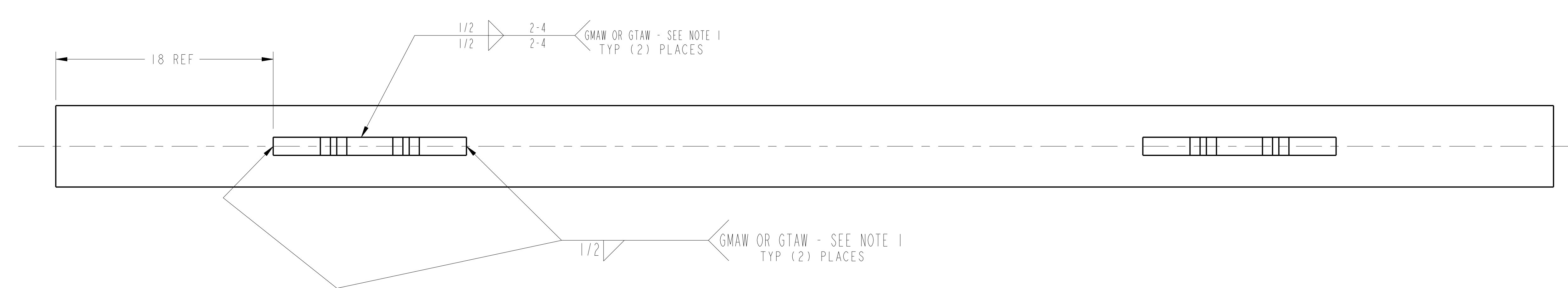
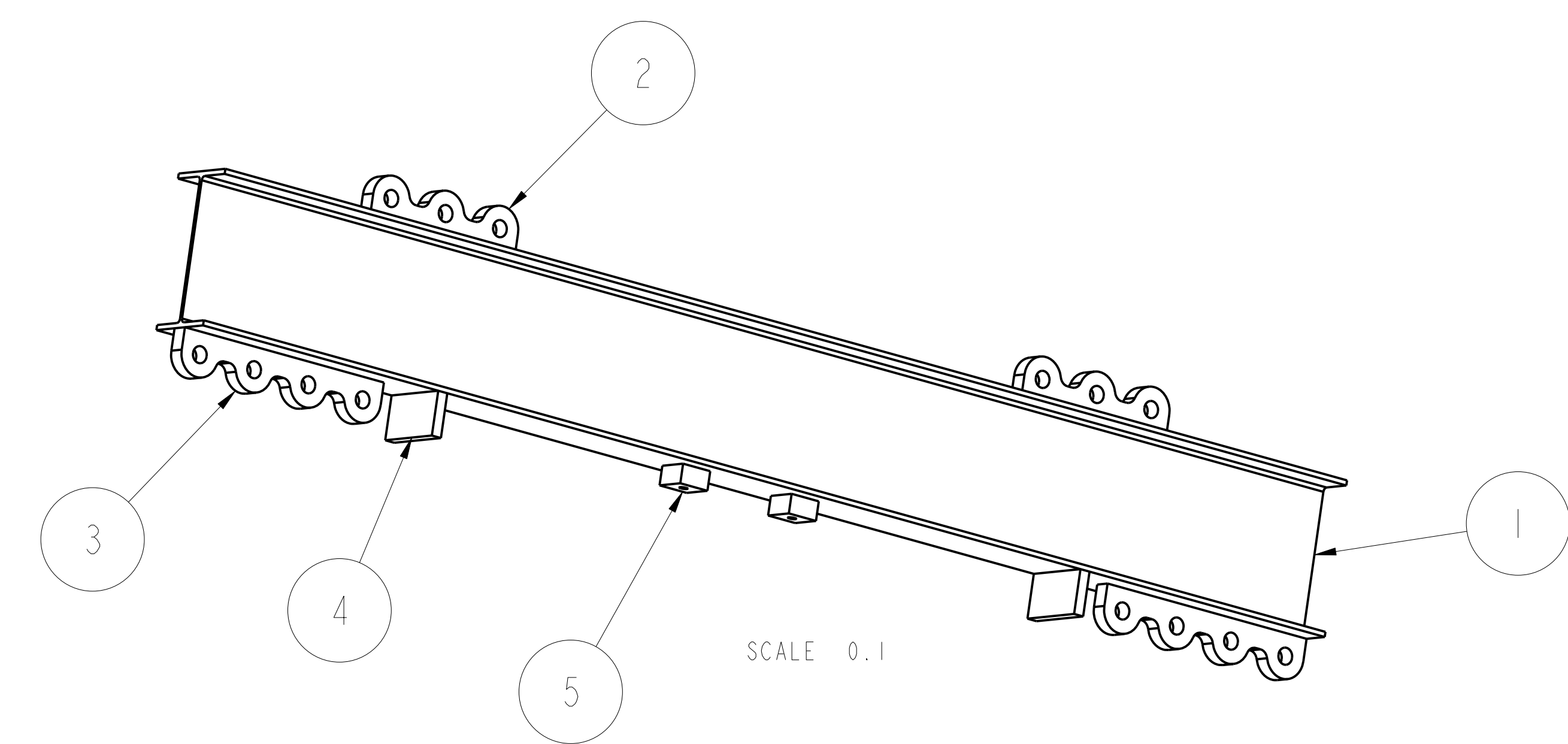


DETAIL A  
SCALE 0.400



DETAIL B  
SCALE 0.400



RELEASE LEVEL: Fabrication  
DWG VERSION NO: 2

WEIGHT	416 lbs
MODEL NAME	SE186-360
WELDING ENGINEER	L. DUDEK 2/26/2008

**NOTES**

1. WELDING SHALL BE PERFORMED IN ACCORDANCE WITH THE REQUIREMENTS OF AWS D14.1 OR PPPL PROCEDURE ENG-037. VISUAL WELD INSPECTION SHALL BE PERFORMED IN ACCORDANCE WITH THE ACCEPTANCE CRITERIA OF AWS D1.1 Section 6.

**RELEASED FOR FABRICATION / INSTALLATION**  
PPPL Drafting

PART NO.	DRAWING NO	NOMENCLATURE OR DESCRIPTION	MATERIAL	QTY	REOD
5	SE186-360-5	MOUNT BLOCK	36,000 ksi STEEL	2	
4	SE186-360-4	FLOOR SUPPORT	36,000 ksi STEEL	2	
3	SE186-360-3	LOWER LIFT LUG	36,000 ksi STEEL	2	
2	SE186-360-2	UPPER LIFT LUG	36,000 ksi STEEL	2	
1	SE186-360-1	LIFTING BEAM - W14 x 34#	36,000 ksi STEEL	1	

COMPUTER GENERATED DRAWING	CENTRAL FILES:	PRINCETON PLASMA PHYSICS LABORATORY
MANUAL CHANGES NOT PERMITTED	UNLESS OTHERWISE SPECIFIED	NATIONAL COMPACT STELLARATOR EXPERIMENT
Pro E	DIMENSIONS ARE IN INCHES	TOOLING DESIGN AND FABRICATION
DO NOT VERIFY INFORMATION BY SCALING DRAWING	BREAK SHARP EDGES .005/.020	FIELD PERIOD ASSEMBLY FIXTURE
	TOLERANCES NON-CUMULATIVE	MODULAR COIL LIFTING BEAM WELDMENT
	DECIMAL-INCH FRACTIONS:	DSN: R. UPCAVAGE 2/26/2008 DRAWING NO:
	XXX +/- .005 12" - 120" +/- .118	CHK: M. VIOLA 2/26/2008
	MODULAR +/- .015 OVER 120" +/- .118	ENGR: B. SANDS 2/26/2008
		SUPV: J. SIEGEL 2/26/2008
		SHEET 1 OF 1 REV 0

NCSX-SE186-360